

Urban Design

Master Planning

Malik Architecture

Publication Team - MAStudio





Manor Housing

Mumbai













Innovation Hub

Telangana

AN URBAN MICROCOSM

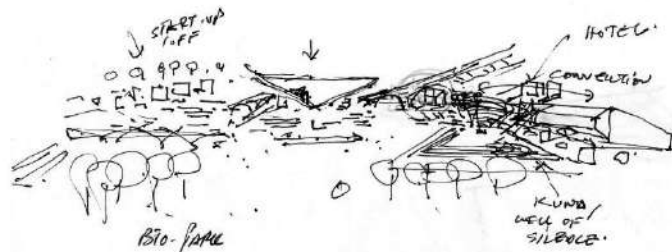
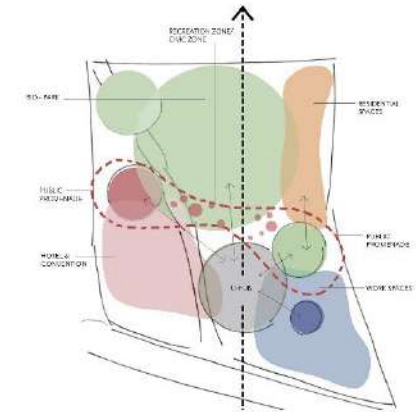
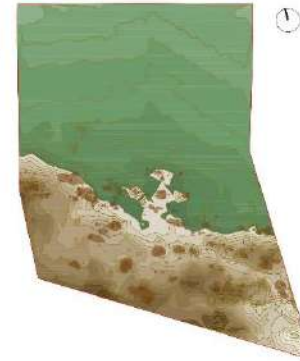
TUSCE is a unique opportunity to represent as a "microcosm", as an experiment towards a deeper understanding of the future urban scape.

All too often we operate at a purely theoretical plane. Too much material has been generated; without multiple studies; yet the situation on the ground is dismal. One look at the chaos of our cities bears testament to this.

The primary objective is to interrogate, analyze and search for the Balance between Nature, Site and Program in a matrix region that has a long and textured Cultural and Social History and a rich repository of Material and Building Traditions.



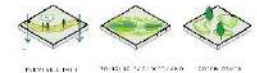
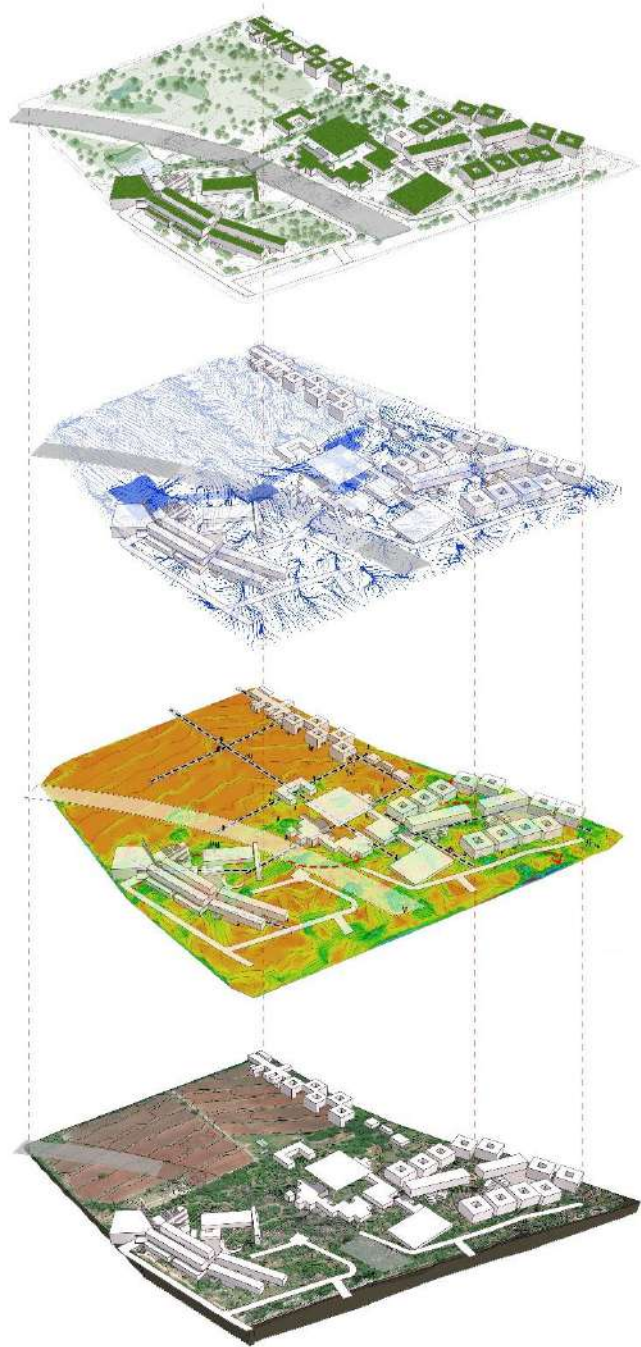
- FERTILE SOIL
- HARD SURFACE
- ROCKY TERRAIN



A first glance at the site speaks of its unique character. The undulating rocky terrain and the sculptural out crop of boulders. On my many visits to Hyderabad its terrain has held me captive but this creates a huge responsibility on the designer as to how he can envisage the diverse nature of the architectural program whilst maintaining the integrity and nature of the Landscape and Terrain.

The first originality line of our concept stemmed from a detailed study of the site, its contours, valleys and hillslopes, water streams and the Flora. It is almost as if the terrain guided the pencil.

The next step was a detailed analysis of the program, its diversity, and as to how these diverse functions could be melded in to specific parts of the site whilst maintaining not only an overall integrity and unity of the complex but equally importantly to visualize the merging of the institutional and public / civic spaces.



ECOLOGY
 Analysis of natural assets, such as the water table, which informs the design, creating the blue-green infrastructure that defines the urban fabric. From the design for the growing field to the urban fabric.

- Ecology Level
- Ecology with Urban
- Ecology with Urban



HYDROLOGY
 An integrated system of rainwater harvesting and greywater reuse, which informs the design of the urban fabric, creating the blue-green infrastructure that defines the urban fabric.

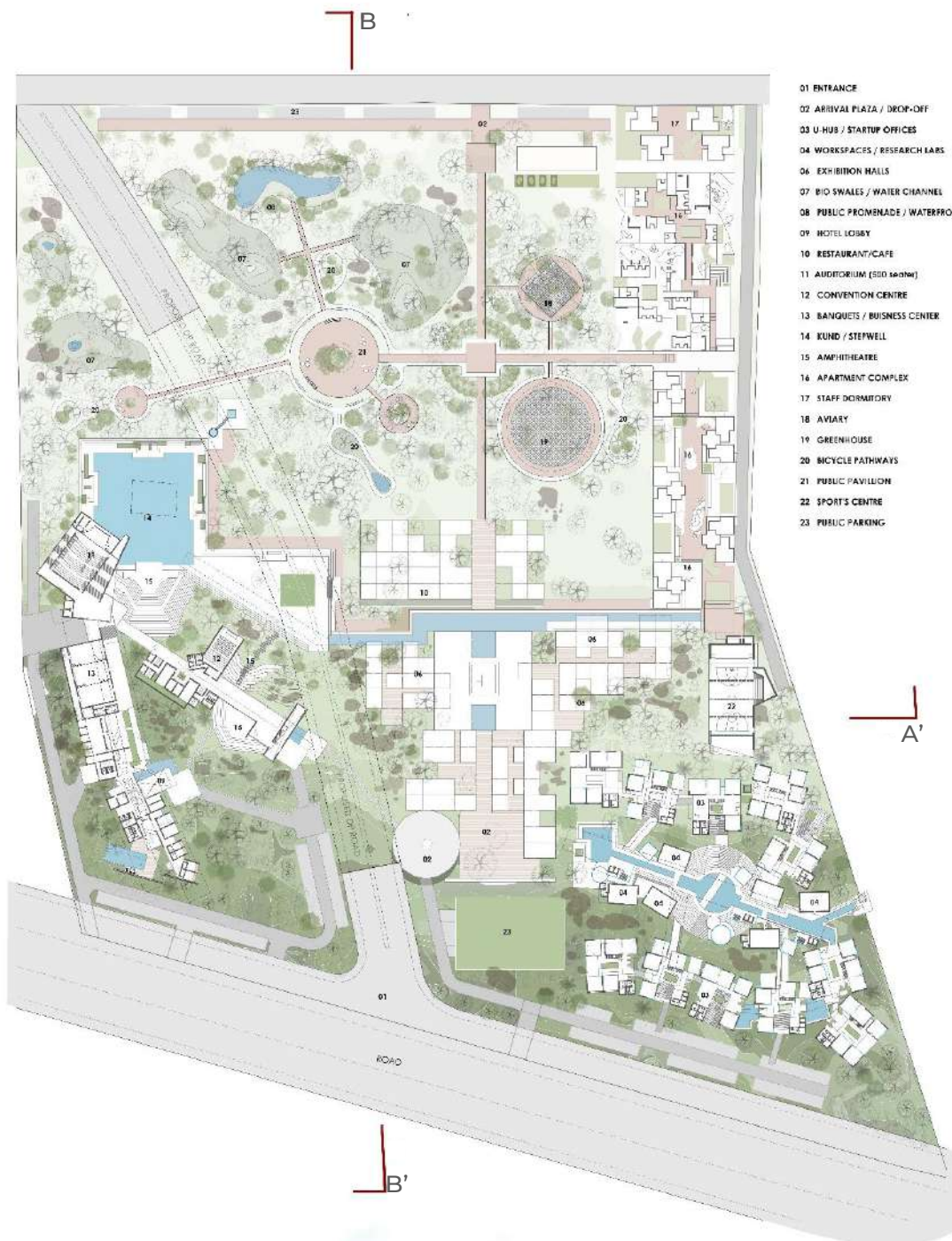
- Hydrology Level
- Hydrology with Urban



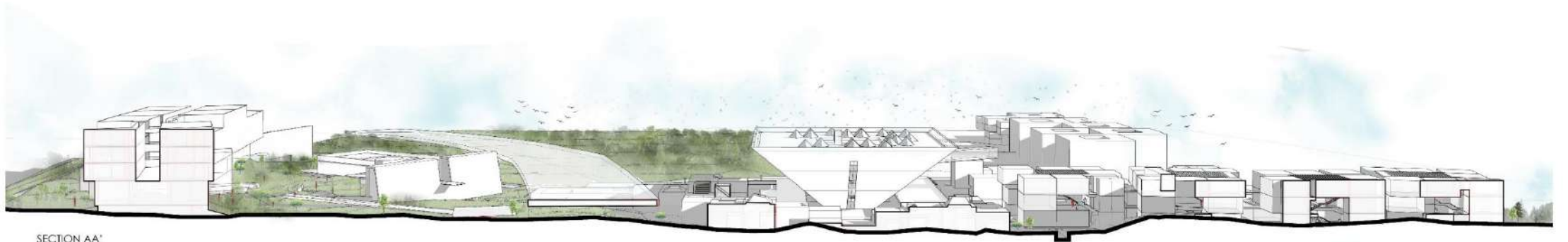
TERRAIN
 A network of waterways, which informs the design of the urban fabric, creating the blue-green infrastructure that defines the urban fabric.

- Waterways
- Waterways
- Waterways
- Waterways

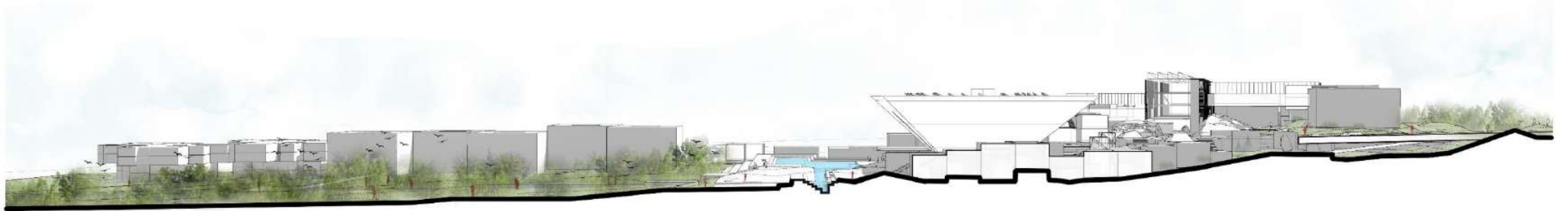
PROGRAM
 A network of waterways, which informs the design of the urban fabric, creating the blue-green infrastructure that defines the urban fabric.



- 01 ENTRANCE
- 02 ARRIVAL PLAZA / DROP-OFF
- 03 U-HUB / STARTUP OFFICES
- 04 WORKSPACES / RESEARCH LABS
- 06 EXHIBITION HALLS
- 07 BIO SWALES / WATER CHANNEL
- 08 PUBLIC PROMENADE / WATERFRONT
- 09 HOTEL LOBBY
- 10 RESTAURANT/CAFE
- 11 AUDITORIUM (500 SEAT)
- 12 CONVENTION CENTRE
- 13 BANQUETS / BUSINESS CENTER
- 14 RUND / STEPWELL
- 15 AMPHITHEATRE
- 16 APARTMENT COMPLEX
- 17 STAFF DORMITORY
- 18 AVIARY
- 19 GREENHOUSE
- 20 BICYCLE PATHWAYS
- 21 PUBLIC PAVILION
- 22 SPORTS CENTRE
- 23 PUBLIC PARKING



SECTION AA'



SECTION BB'



























