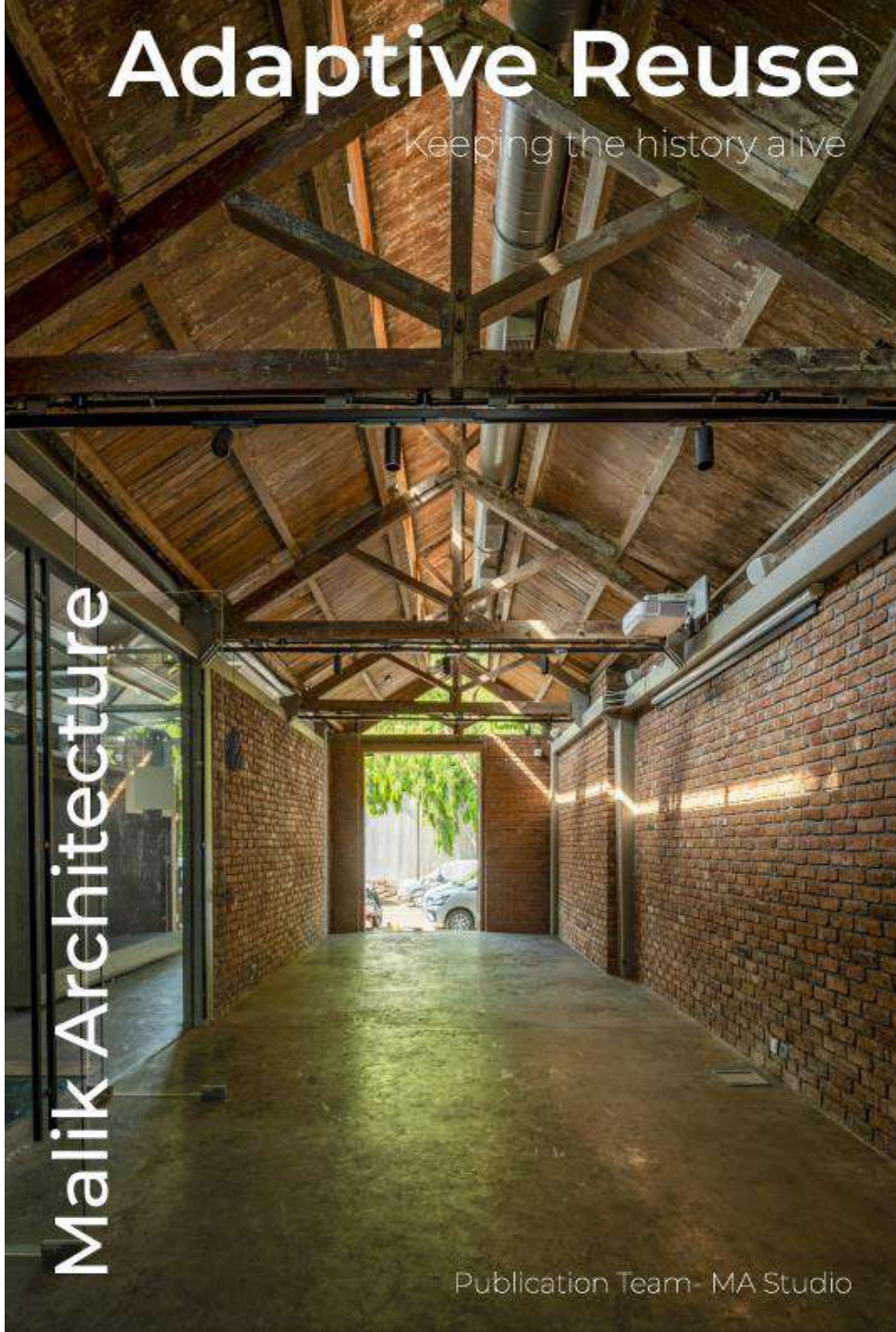


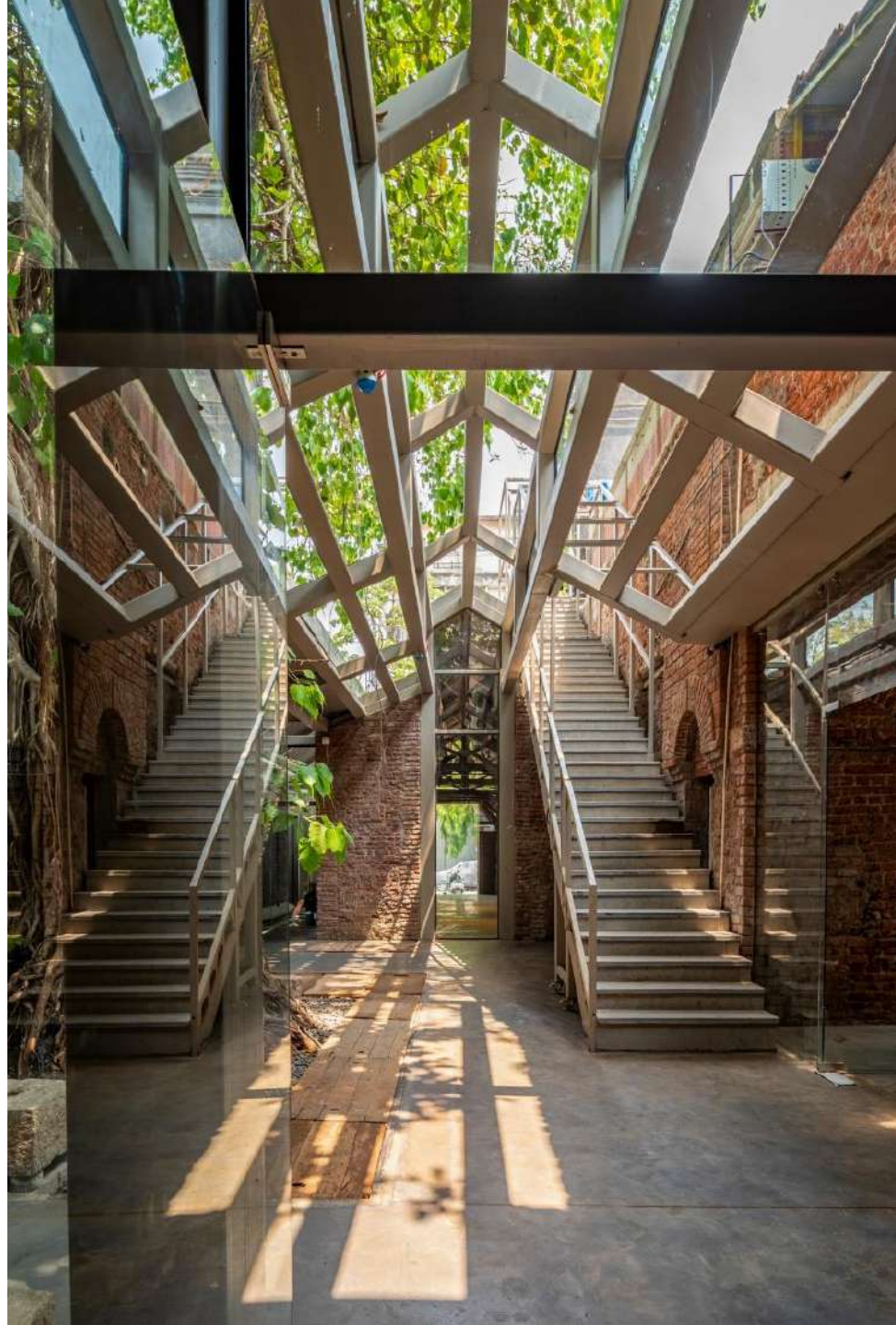
# Adaptive Reuse

Keeping the history alive

Malik Architecture

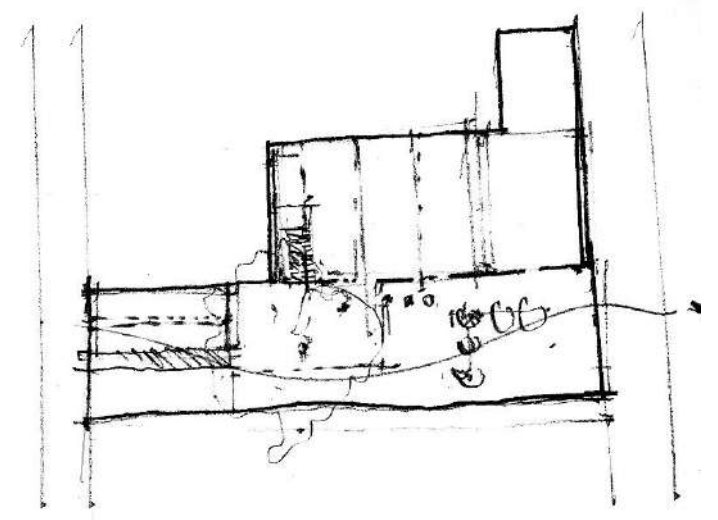
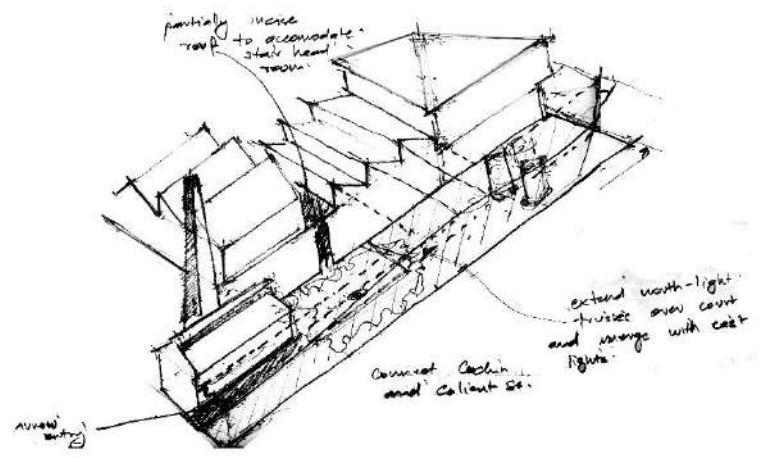
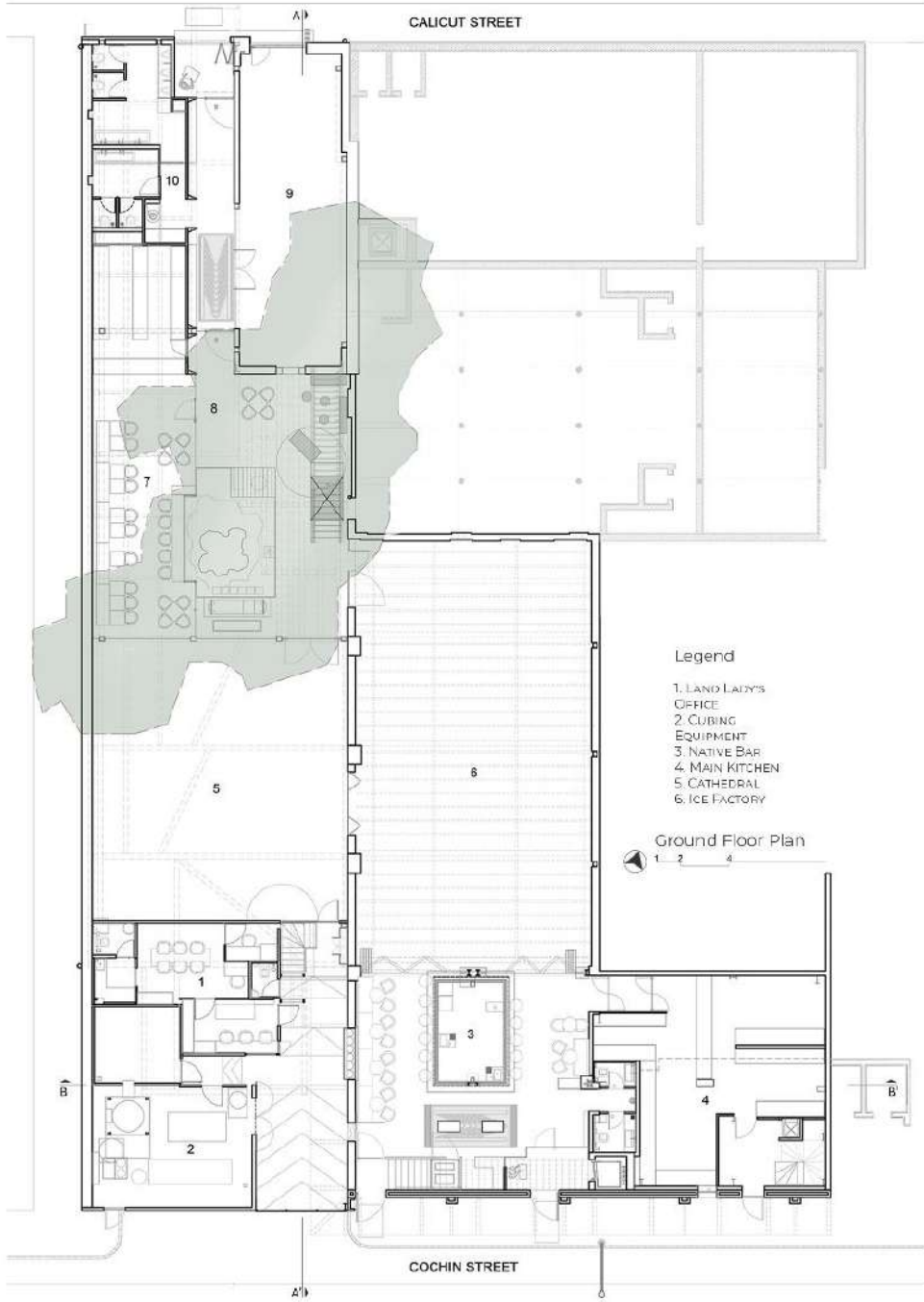
Publication Team - MA Studio

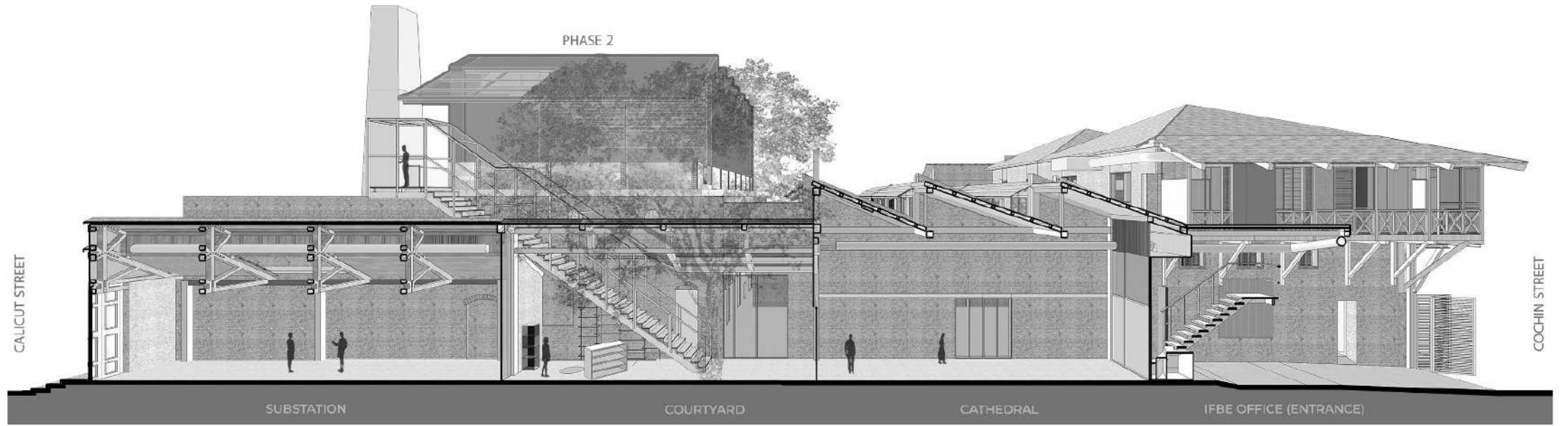


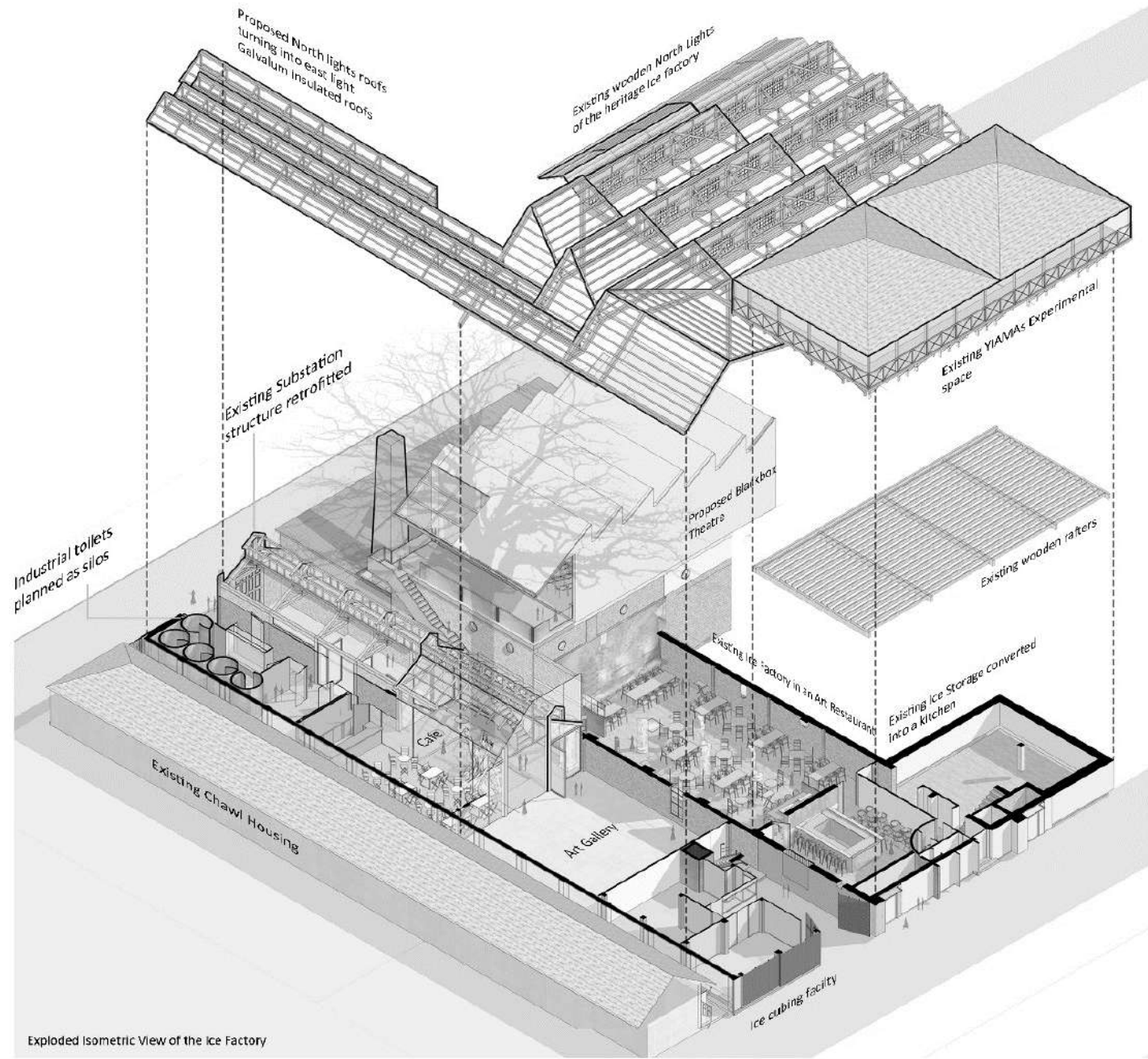


## Ice Factory

Mumbai



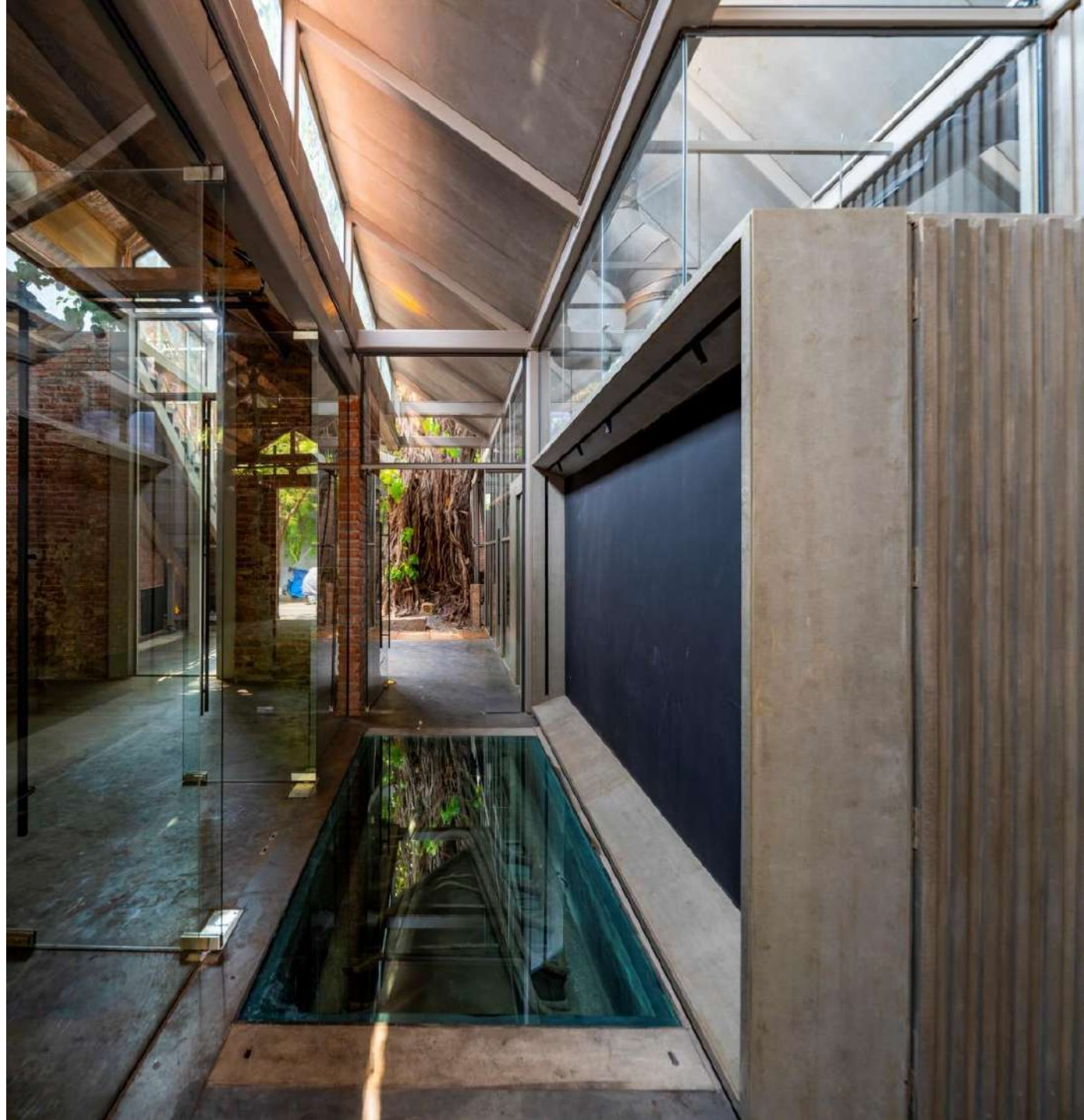




Exploded Isometric View of the Ice Factory

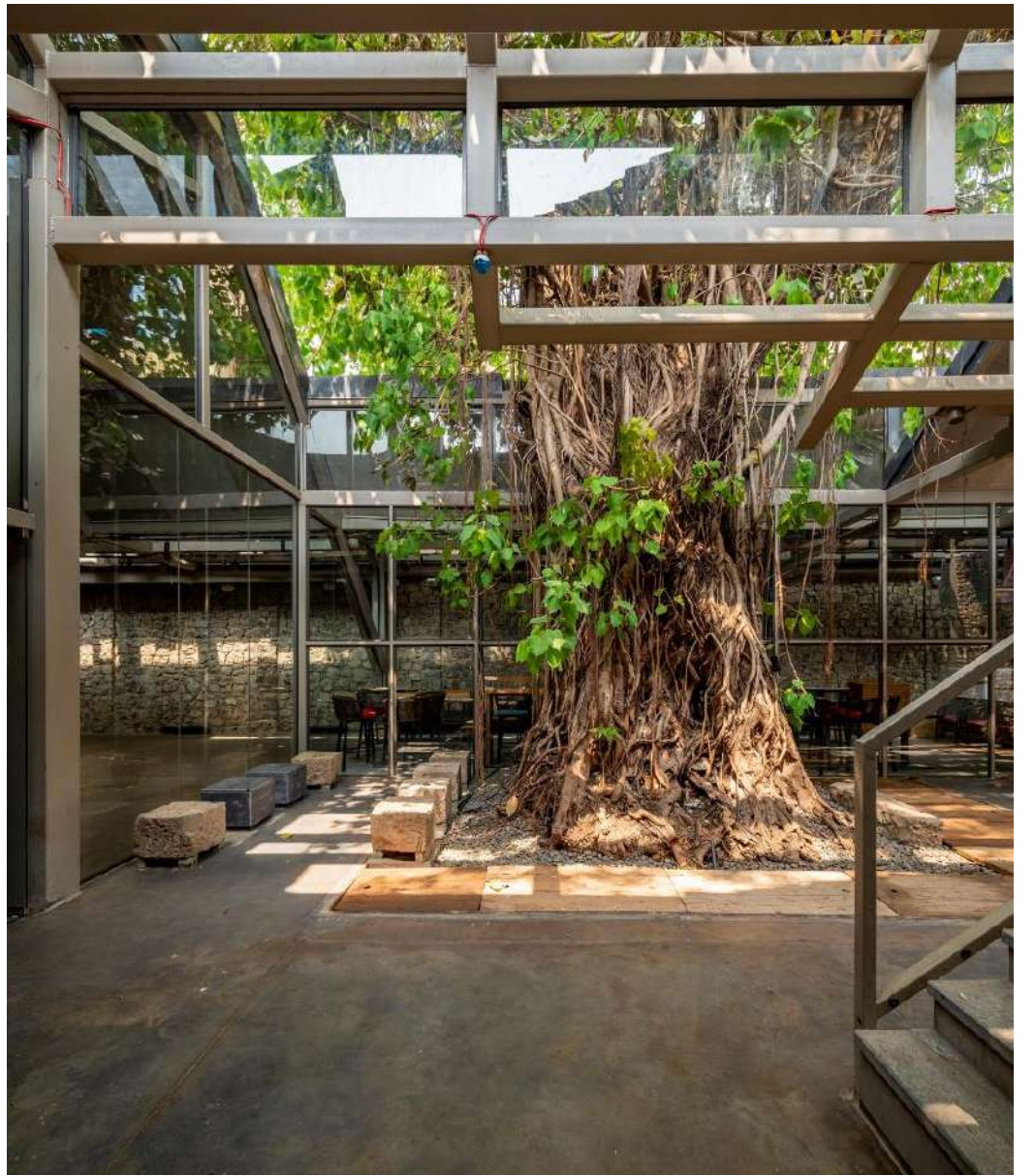








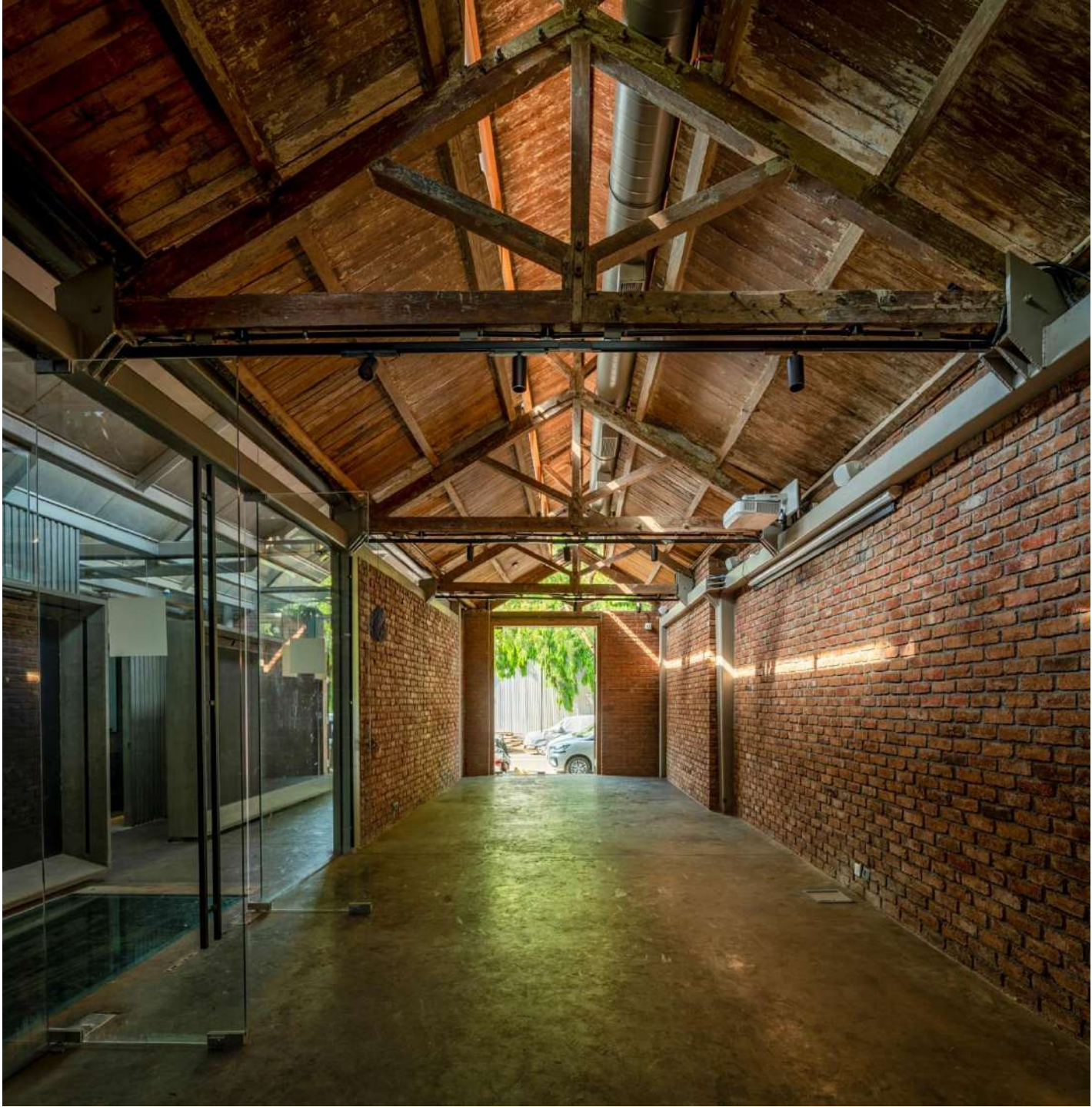


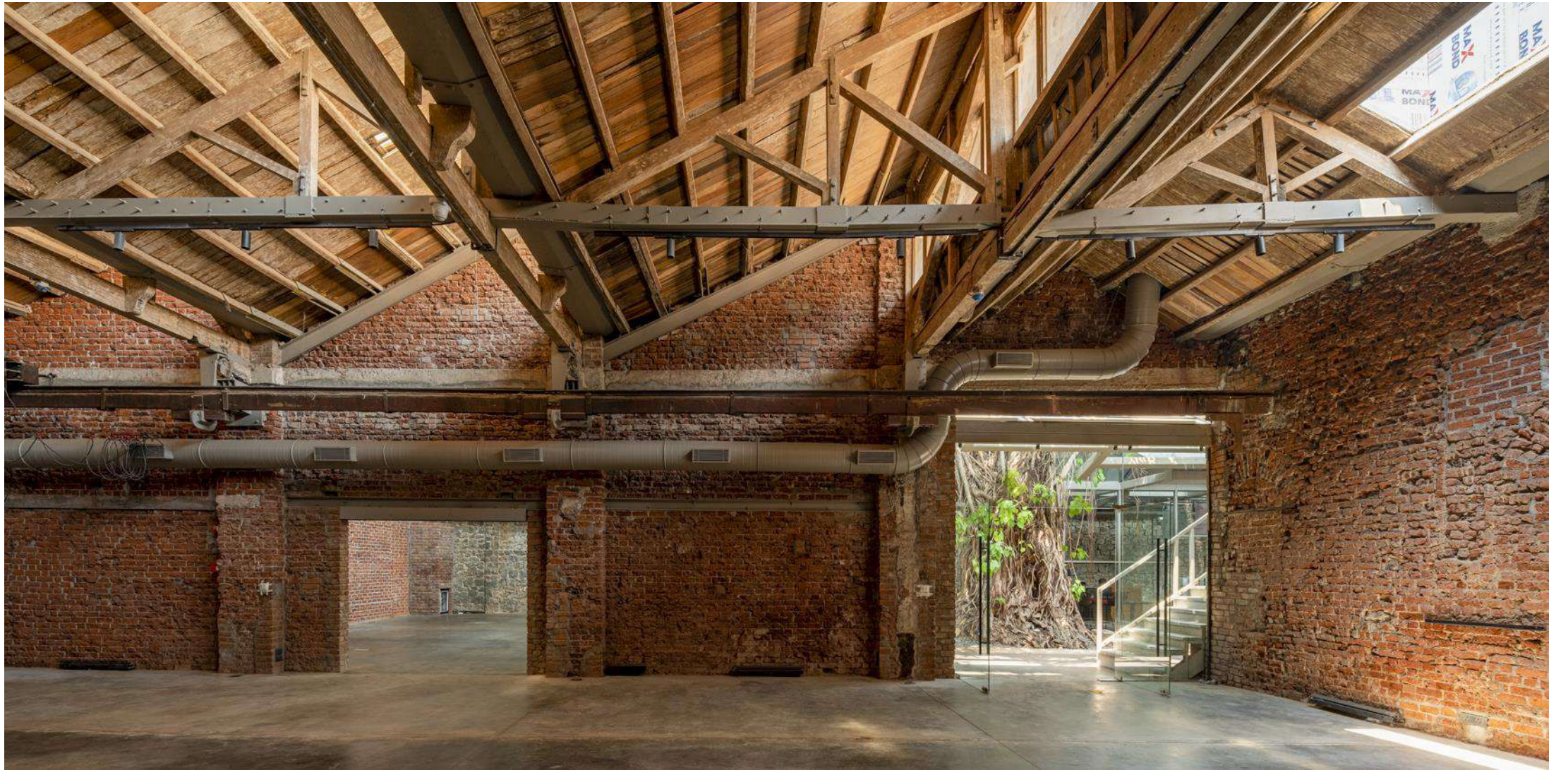












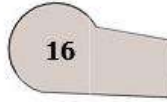


## Hotel at Lohgarh

Lonavala



# SITE PLAN



1. Entrance lobby
2. Spa & Fitness
3. Restaurants
4. Villas connected to the Main Block (16 of 50sqm each)
5. Twin Villas (14 of 50sqm each)
6. Single Villas (24 of 50sqm each)
7. Deluxe Suites (2 of 100sqm each)
8. Presidential Suite (1 of 200sqm each)
9. Lagoon
10. Golf course
11. Sports Centre
12. Private Bungalow Scheme (type A & B)
13. Service Road
14. Road to Main Lobby
15. Road to Banquet & Business centre
16. Lohgad Fort
17. Kitchen
18. Swimming Pool
19. Banquet & Business Centre below
20. Service Block Area
21. Library & Tea Lounge
22. Viewing areas
23. Service entrance
24. Main guest entrance











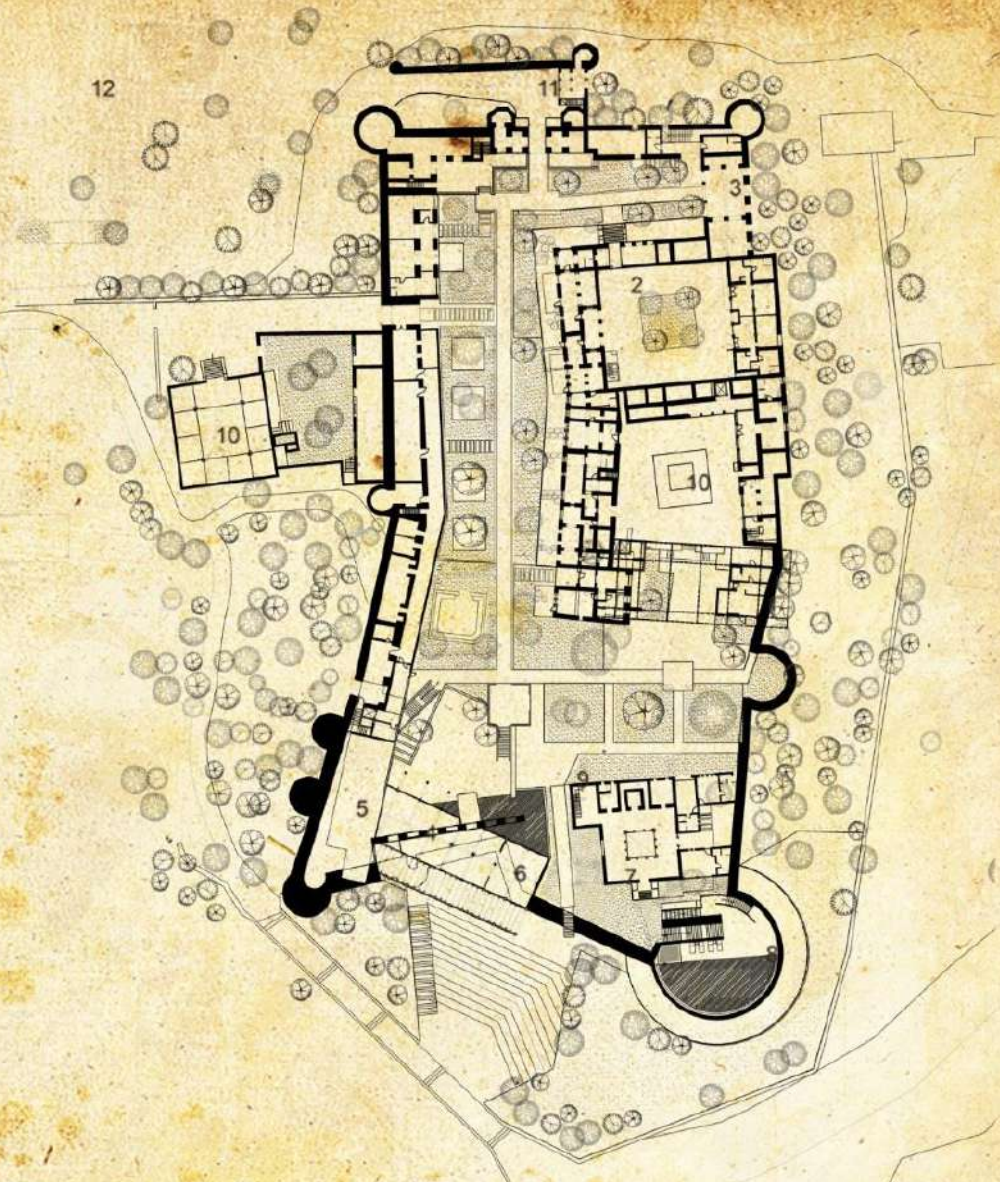
## Hotel at Khatoli

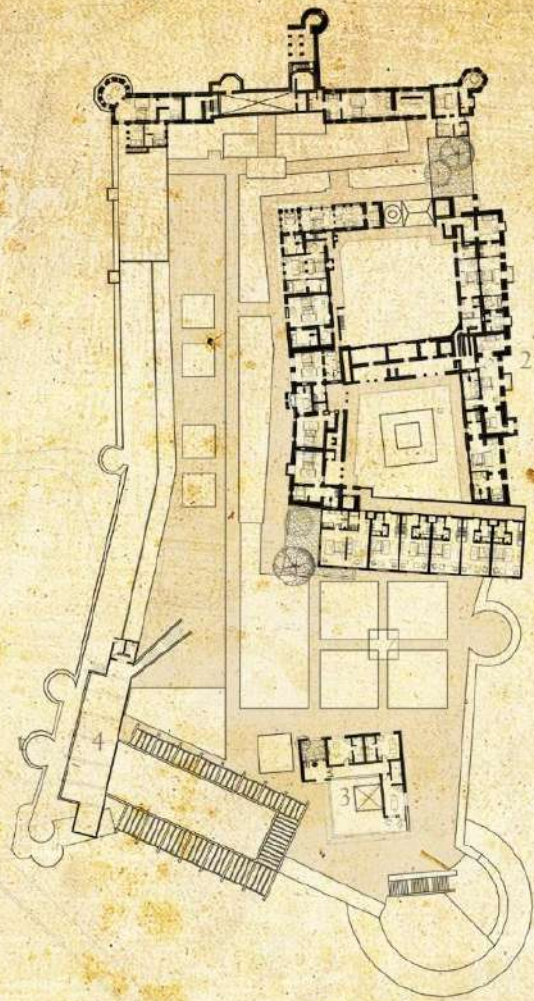
Khatoli

LEGEND

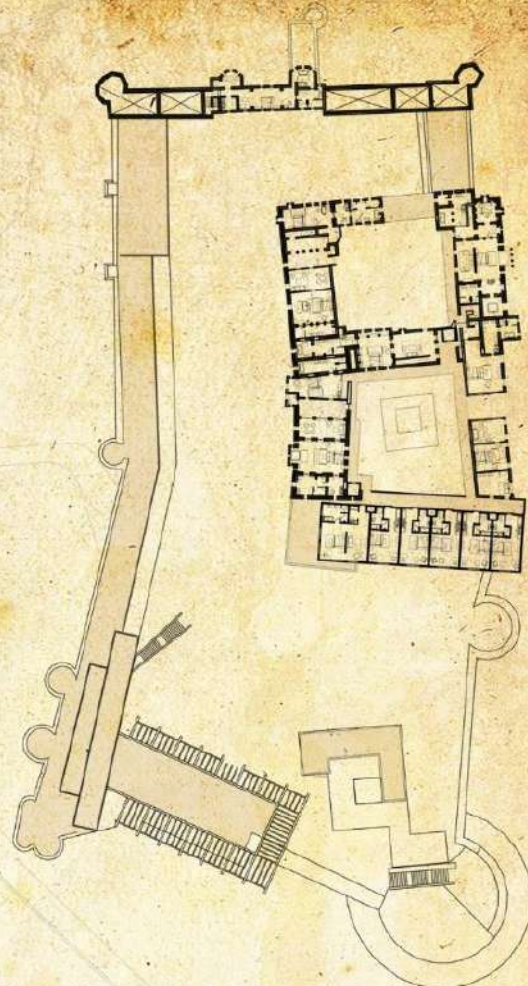
- 1. New rooms
- 2. Existing suites
- 3. Lobby
- 4. Coffee Shop
- 5. Kitchen
- 6. Bar
- 7. Spa
- 8. Pool
- 9. Toilets
- 10. Temple
- 11. Entrance
- 12. Parking

Entrance Level





first floor level



second floor level

- LEGEND
- 1. New rooms
  - 2. Old rooms
  - 3. Spa
  - 4. Conference



The Hotel





## khatoli fort heritage hotel

A royal abode and a luxury hotel on the banks of river Parvati











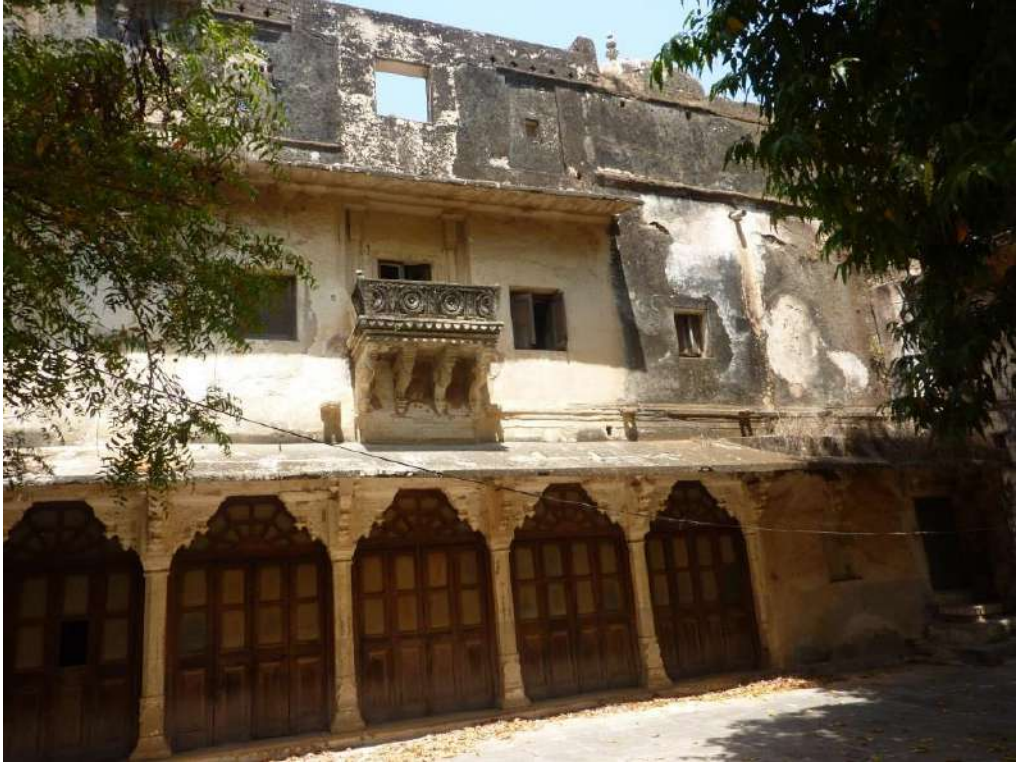


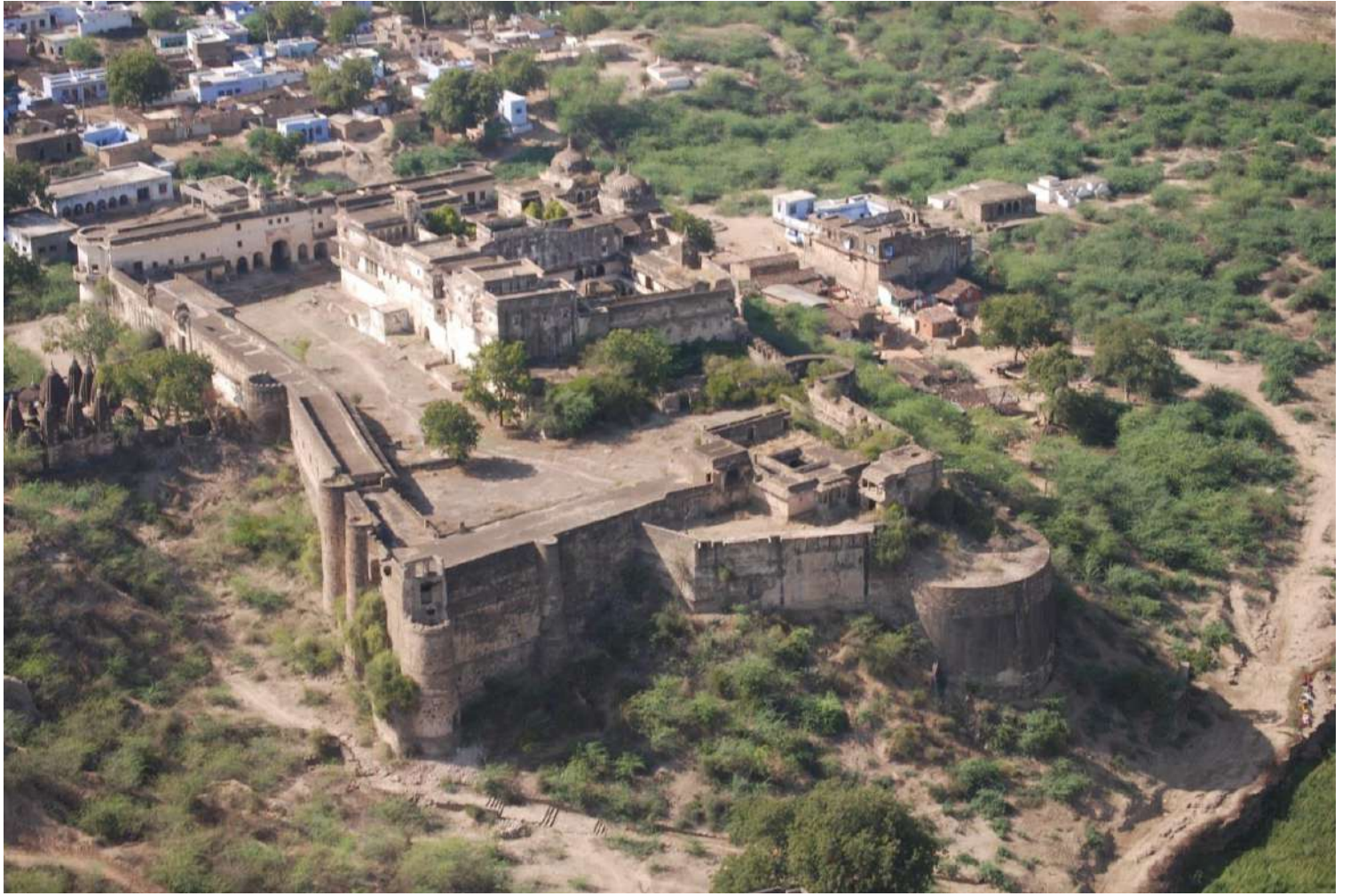










































## Wageshwar Temple Restoration

Lonavala



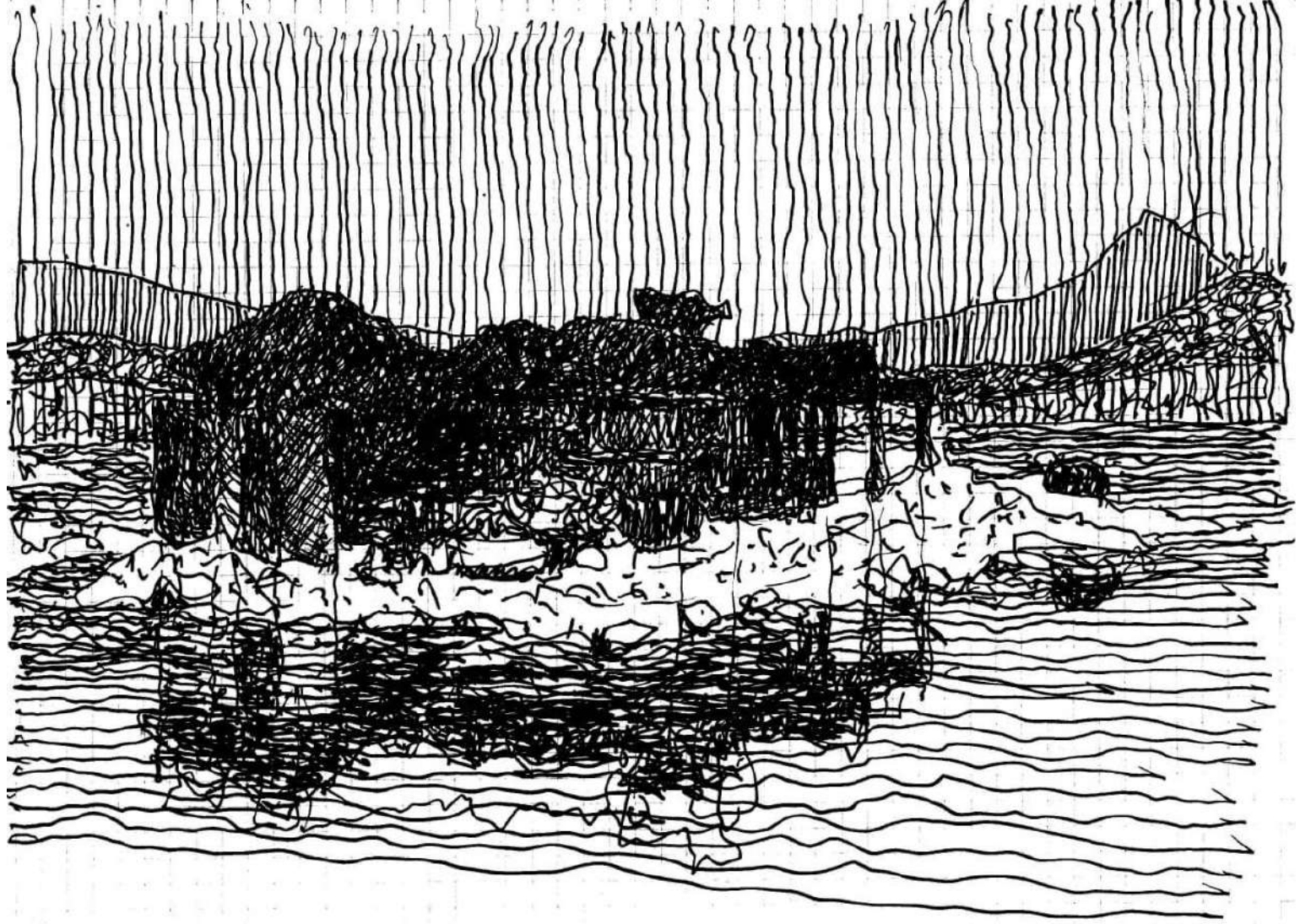
LOCATION MAP

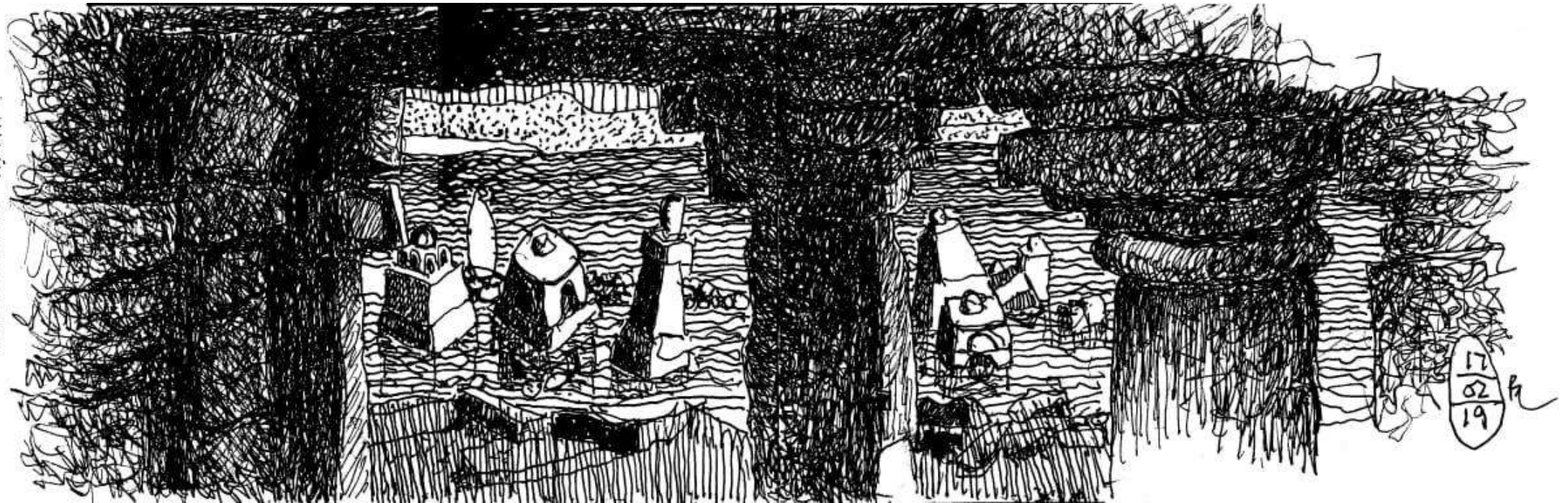


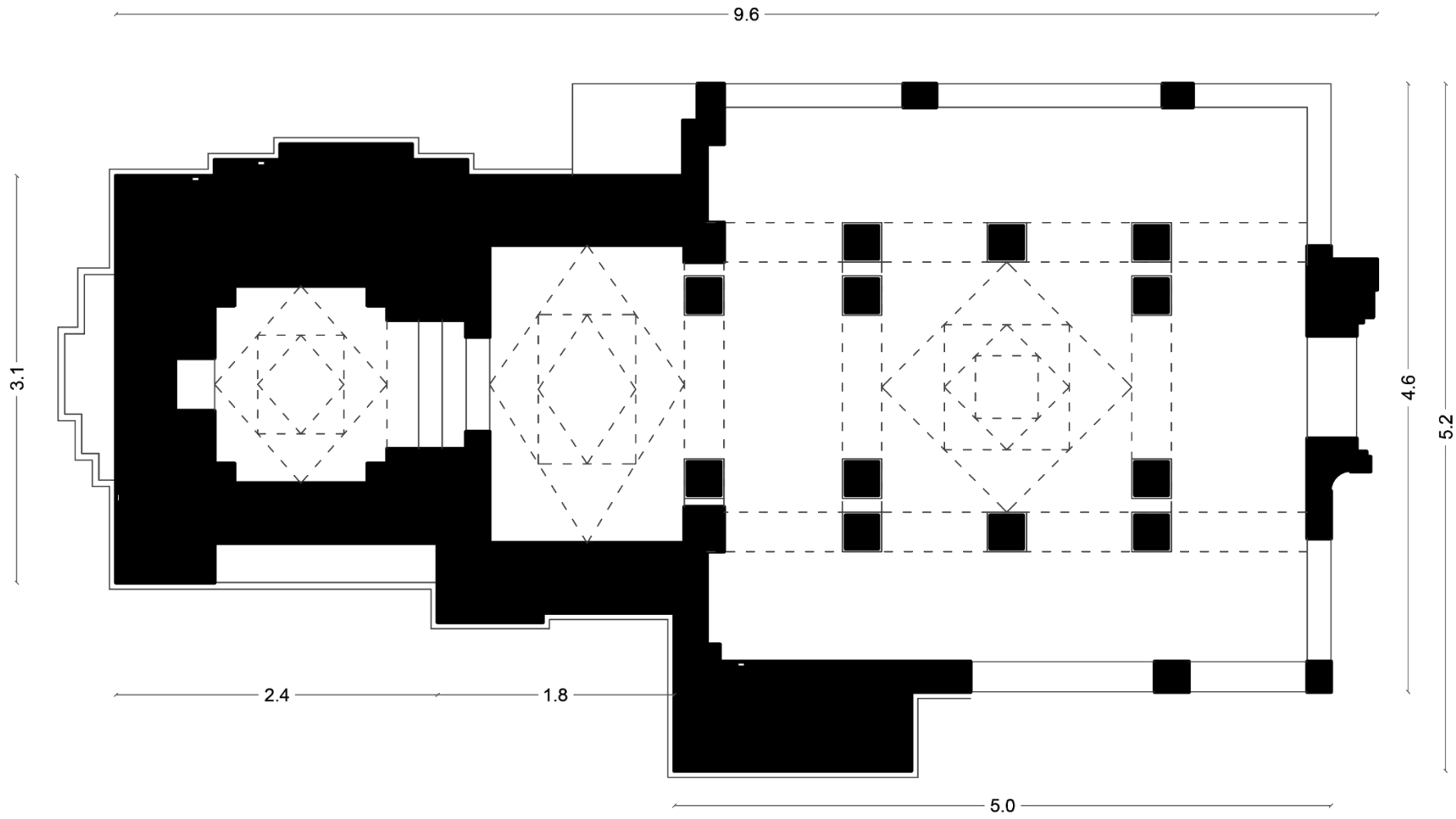




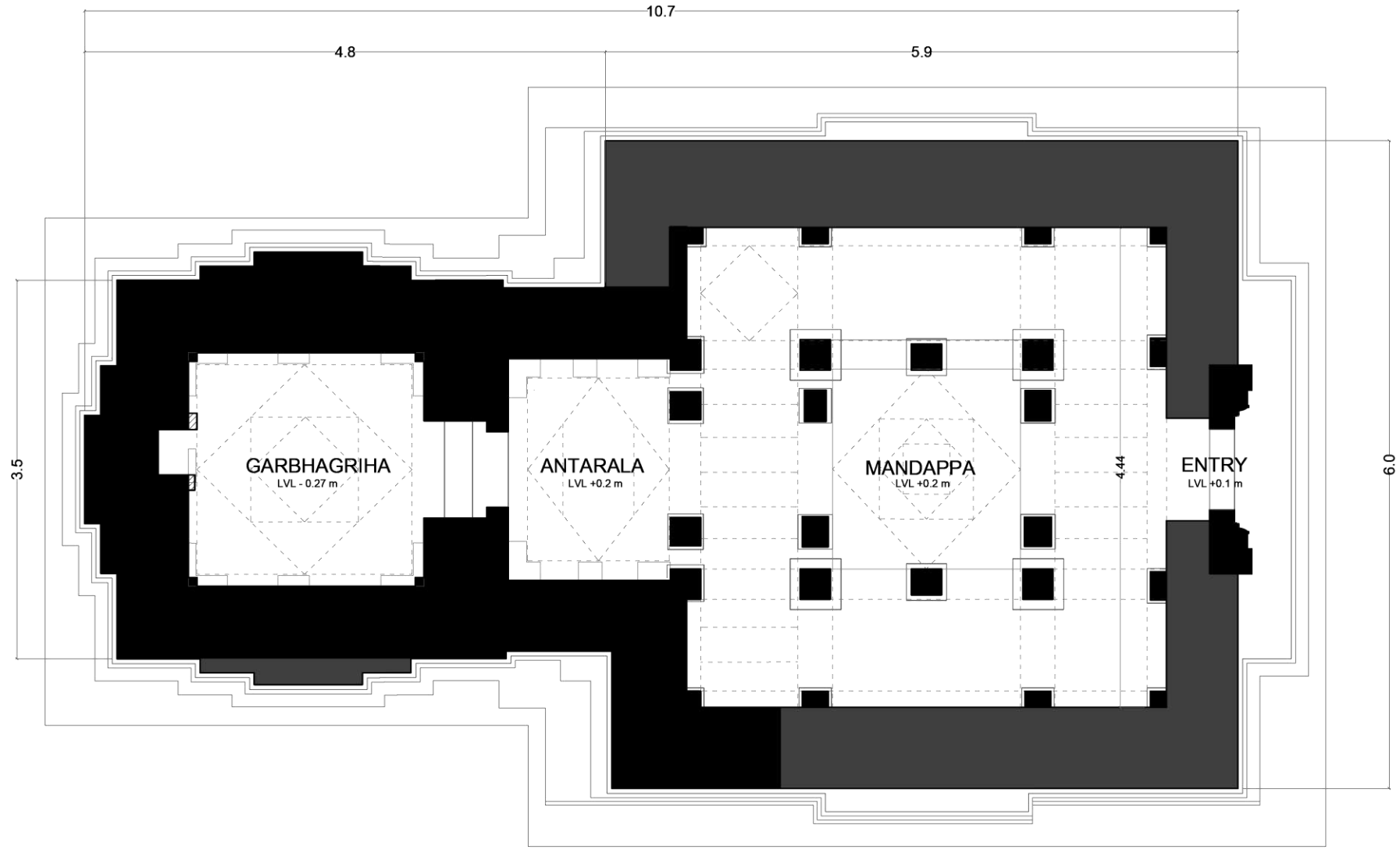
SITE CONDITIONS

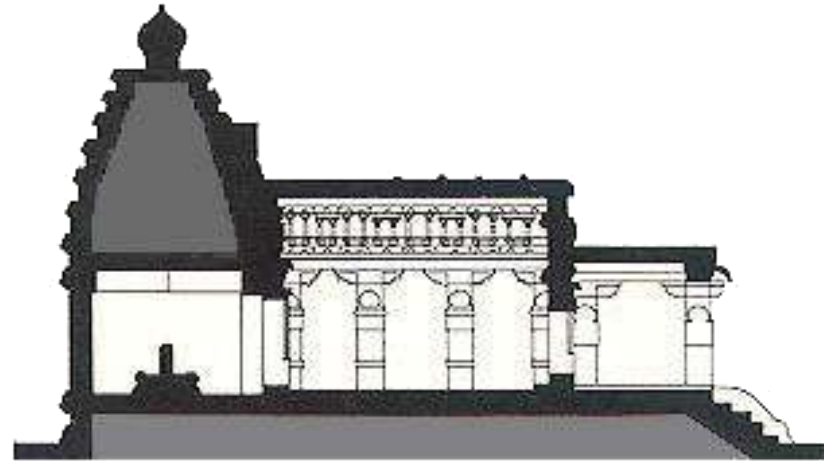
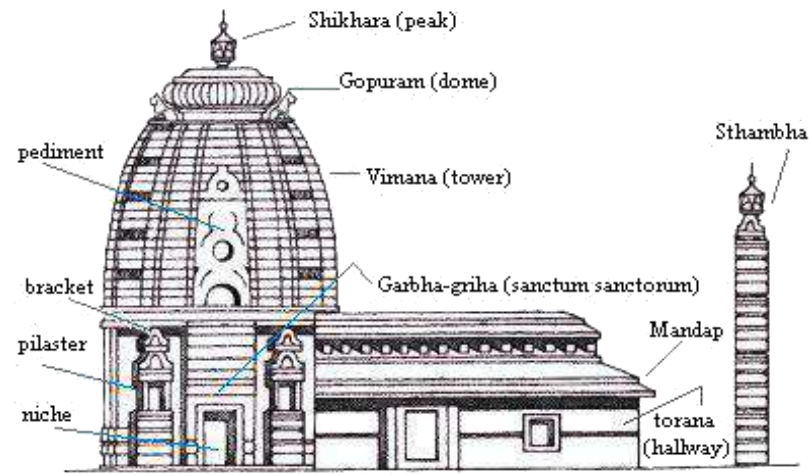








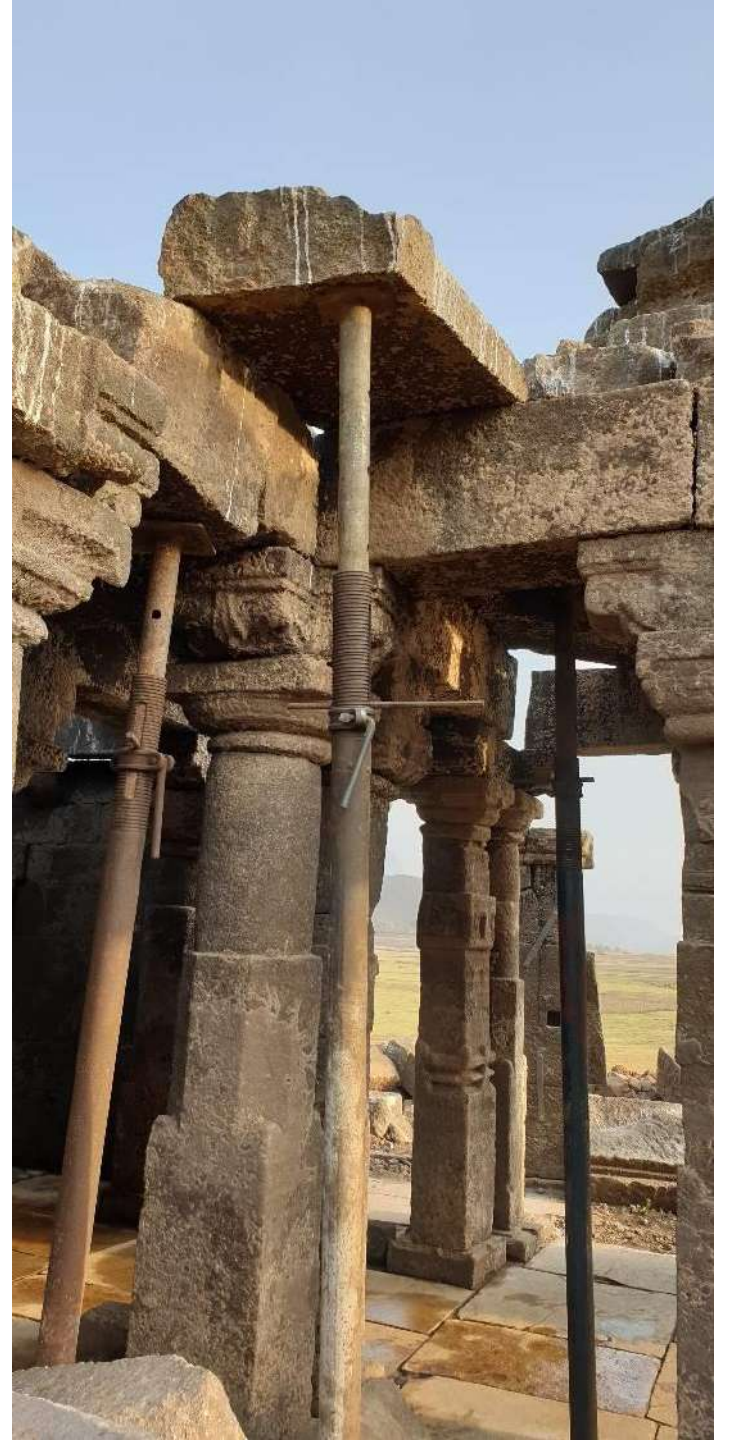








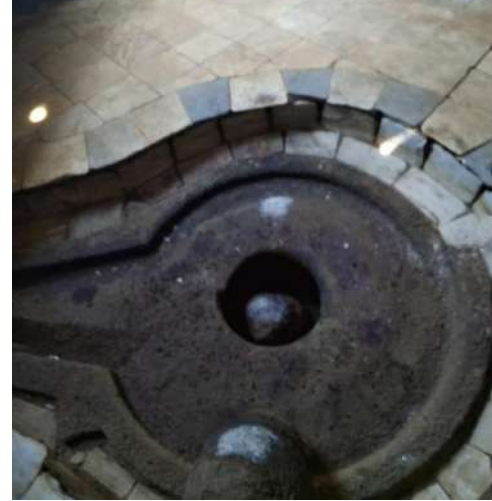














SITE CONDITIONS











BEFORE



BEFORE



AFTER



AFTER

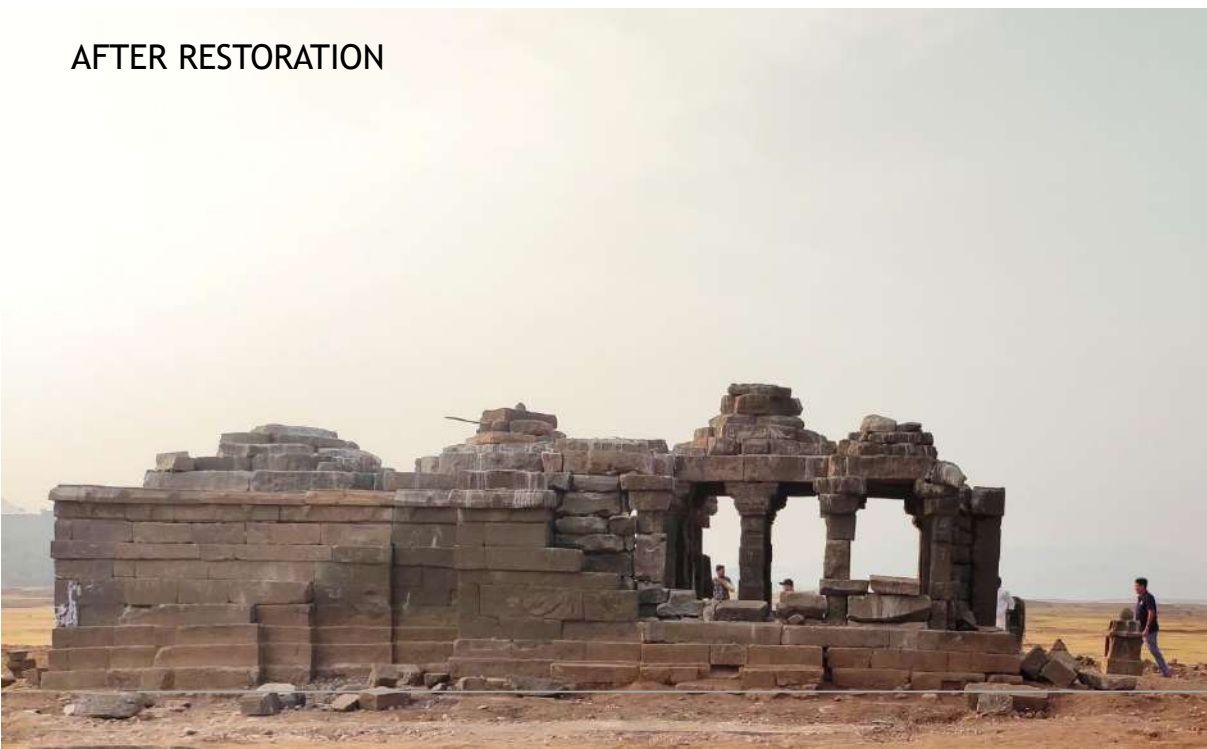




BEFORE



AFTER RESTORATION







BEFORE RESTORATION



AFTER RESTORATION

