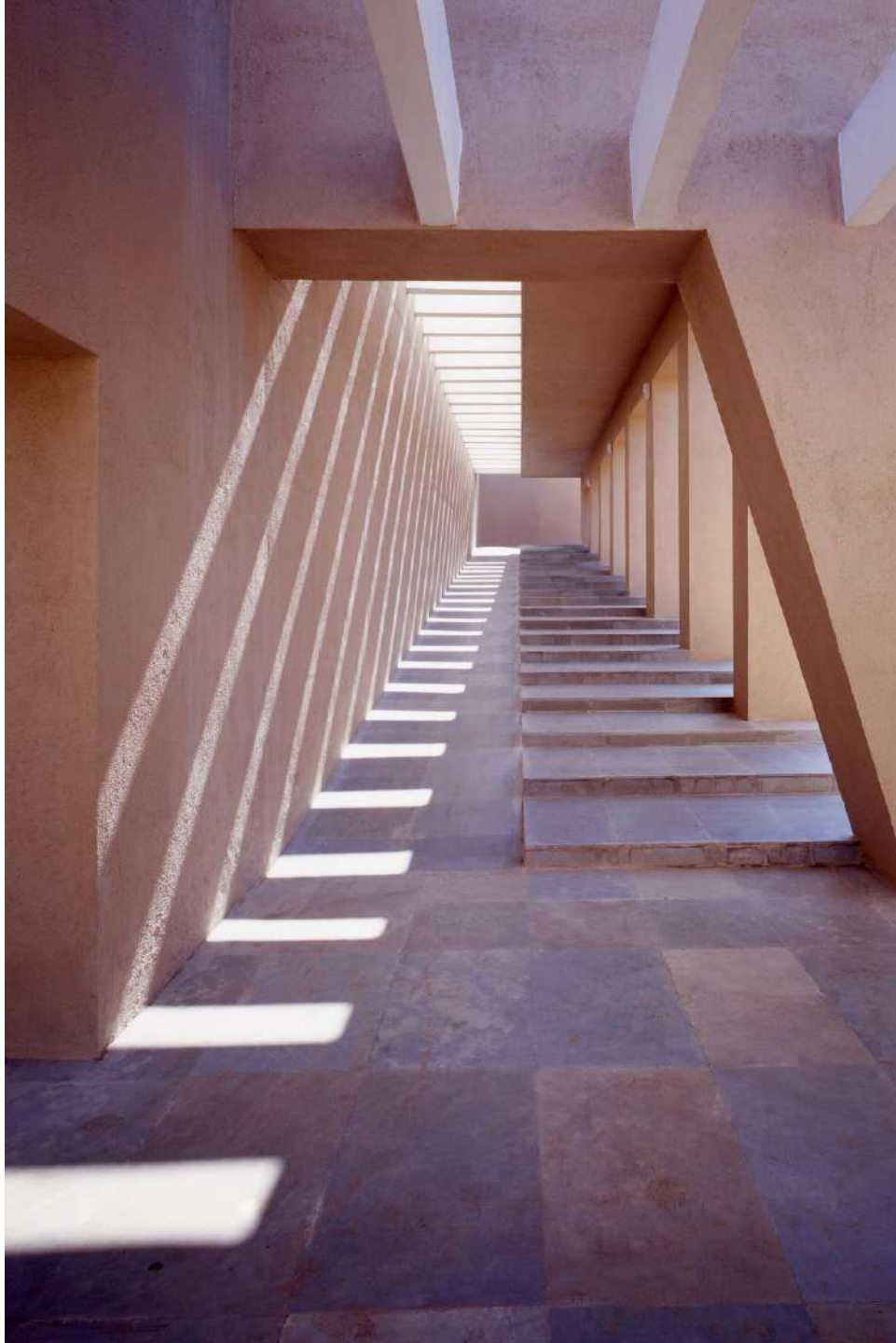


# Institutional

Centers for Knowledge and Research

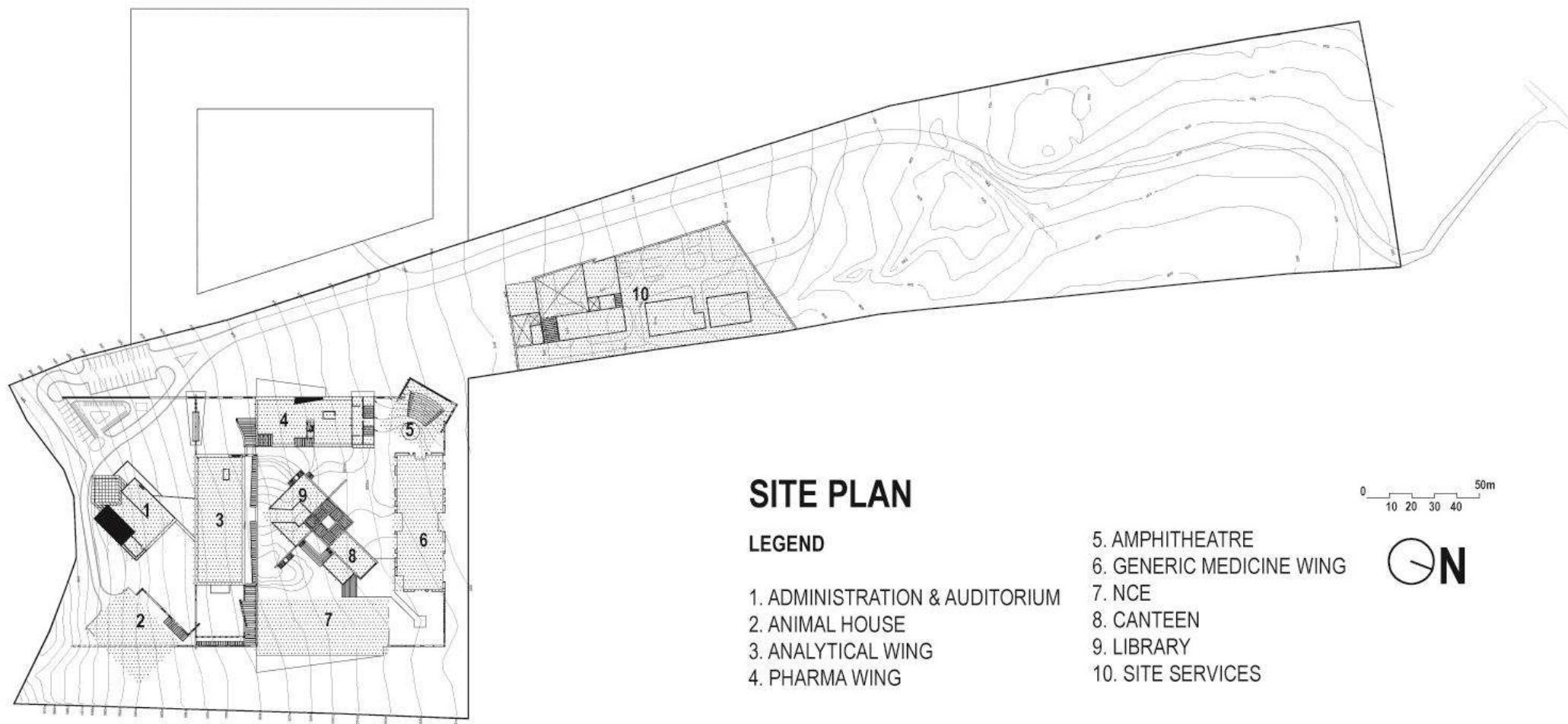
Malik Architecture

Publication Team- MA Studio



## Lupin Research Park

Pune



## SITE PLAN

### LEGEND

- 1. ADMINISTRATION & AUDITORIUM
- 2. ANIMAL HOUSE
- 3. ANALYTICAL WING
- 4. PHARMA WING

- 5. AMPHITHEATRE
- 6. GENERIC MEDICINE WING
- 7. NCE
- 8. CANTEEN
- 9. LIBRARY
- 10. SITE SERVICES









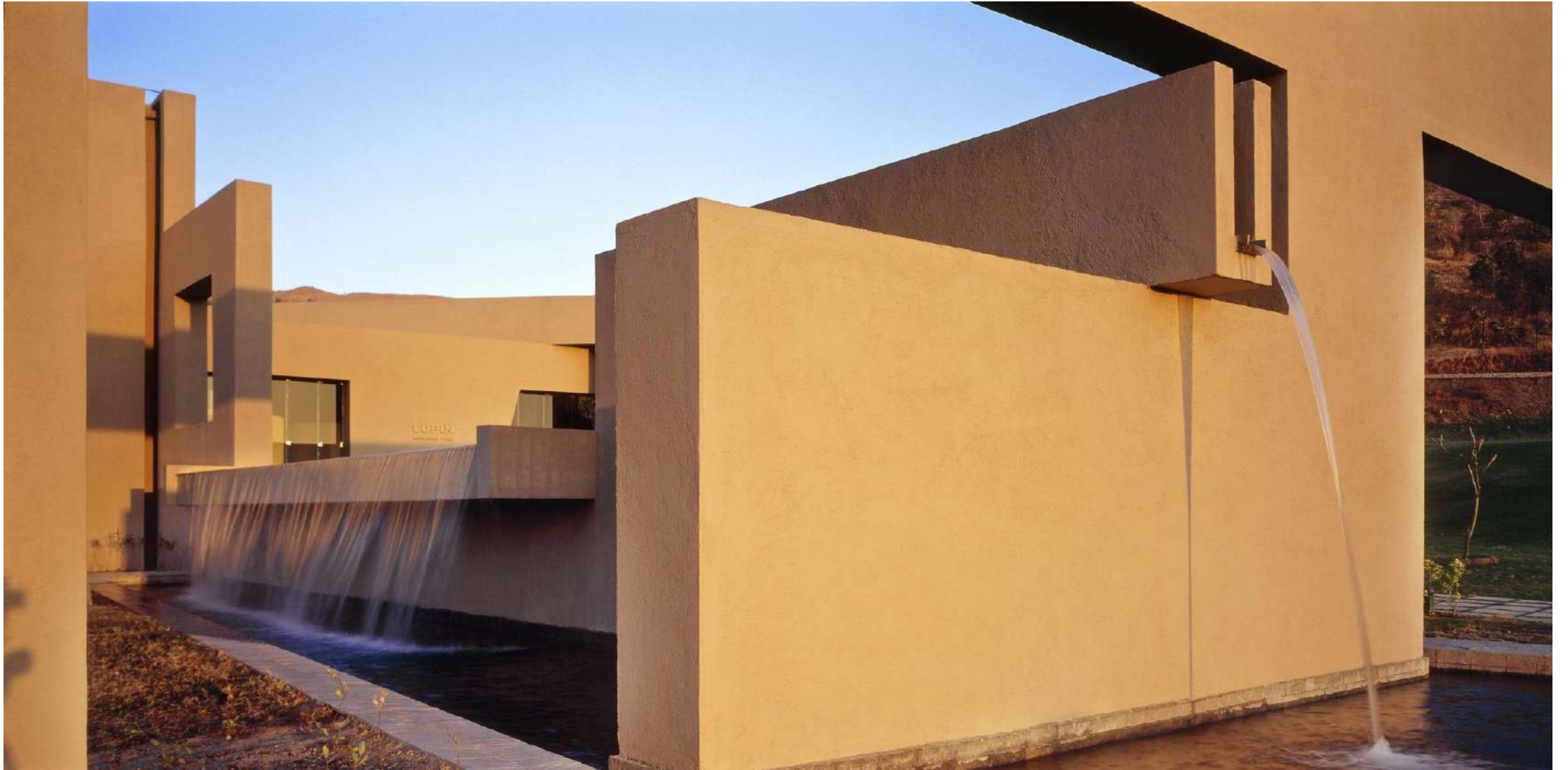








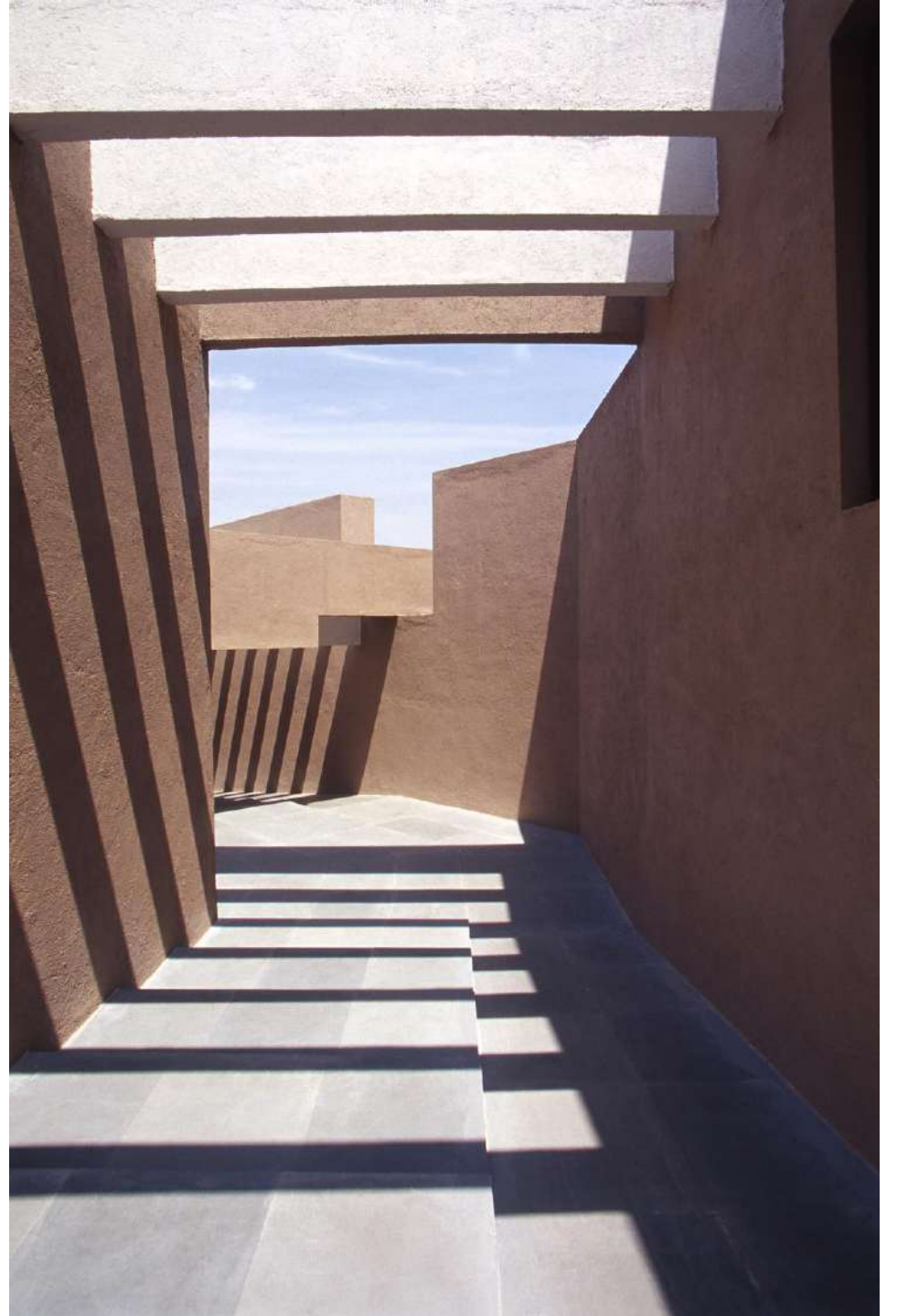












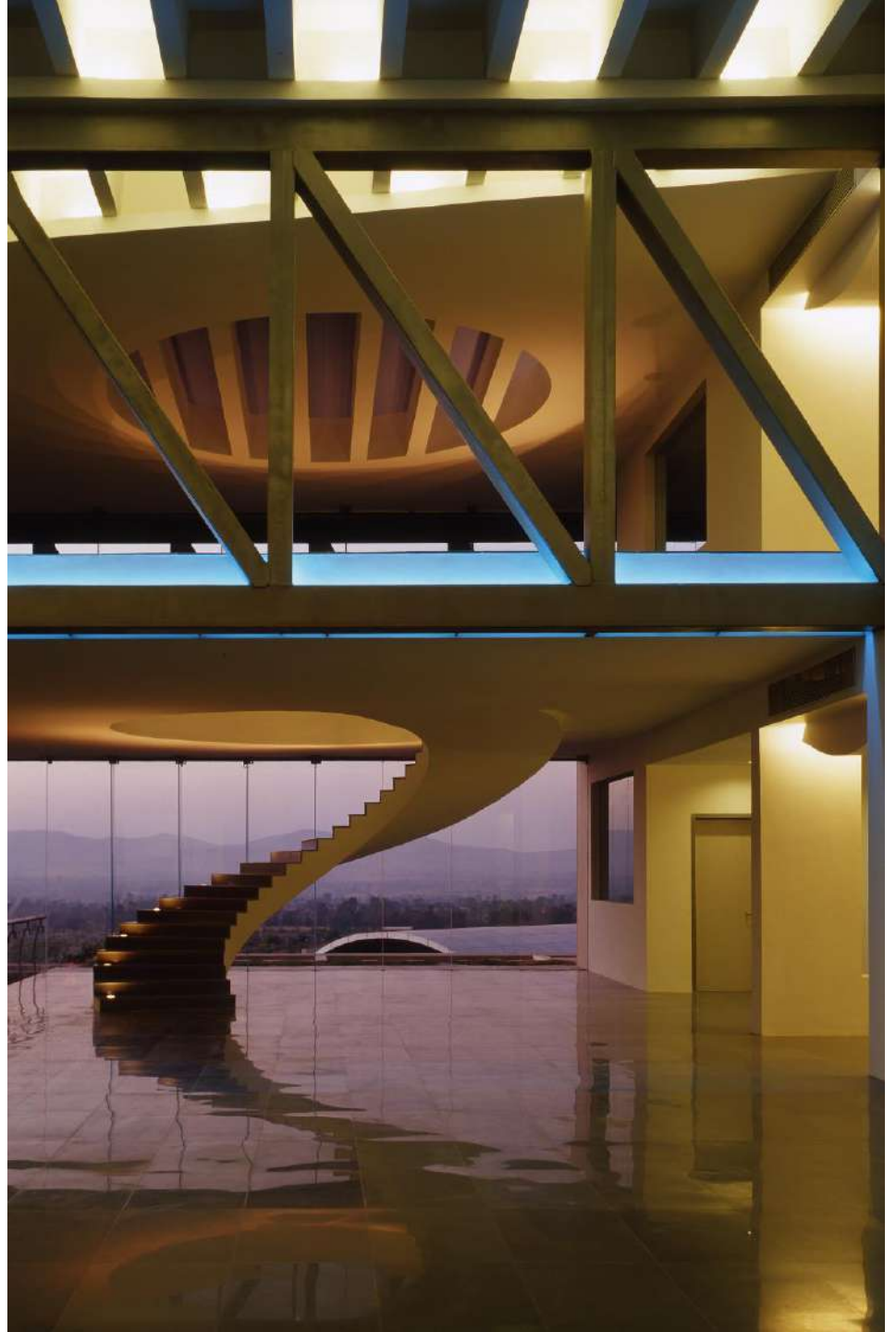


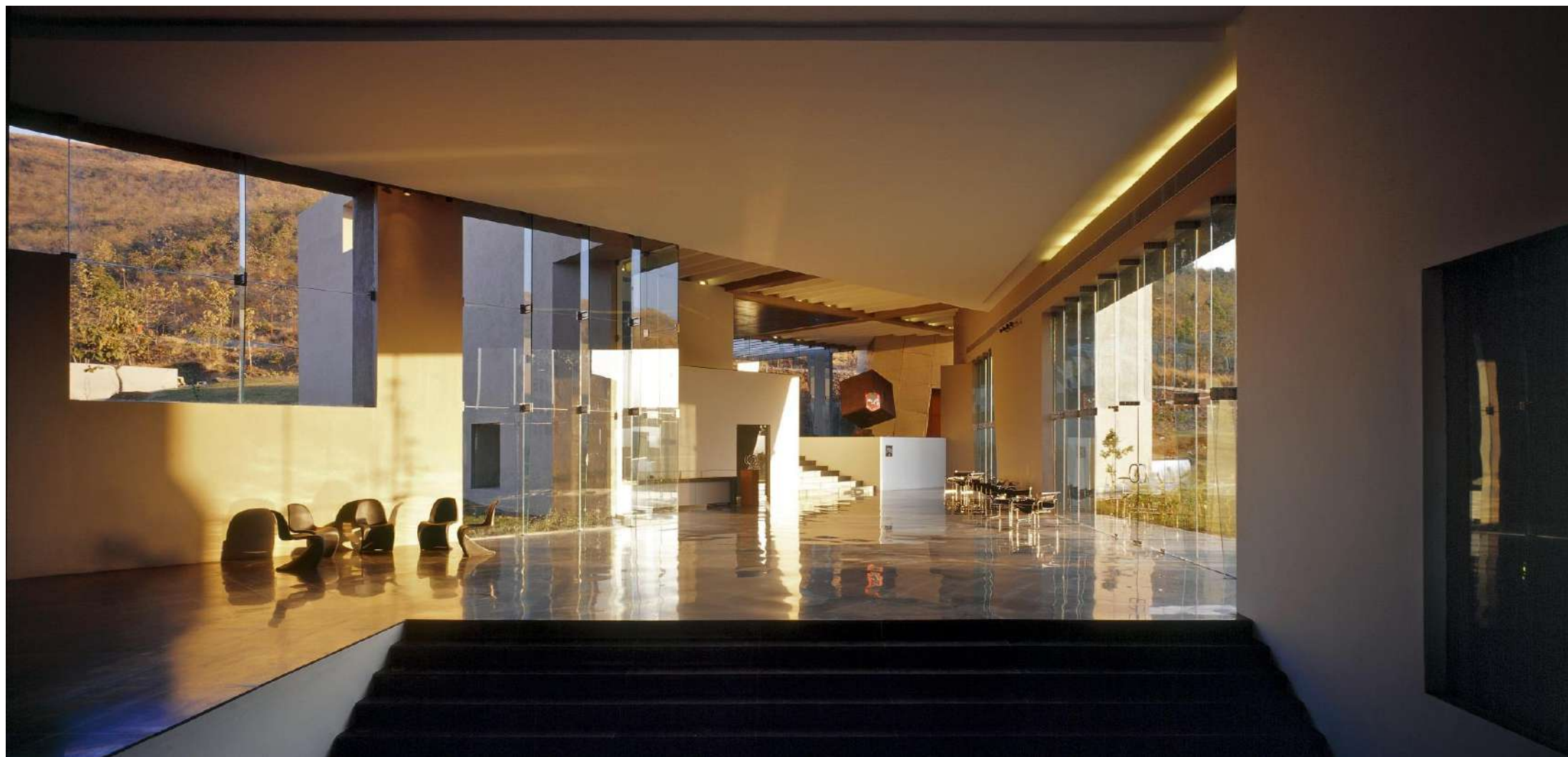








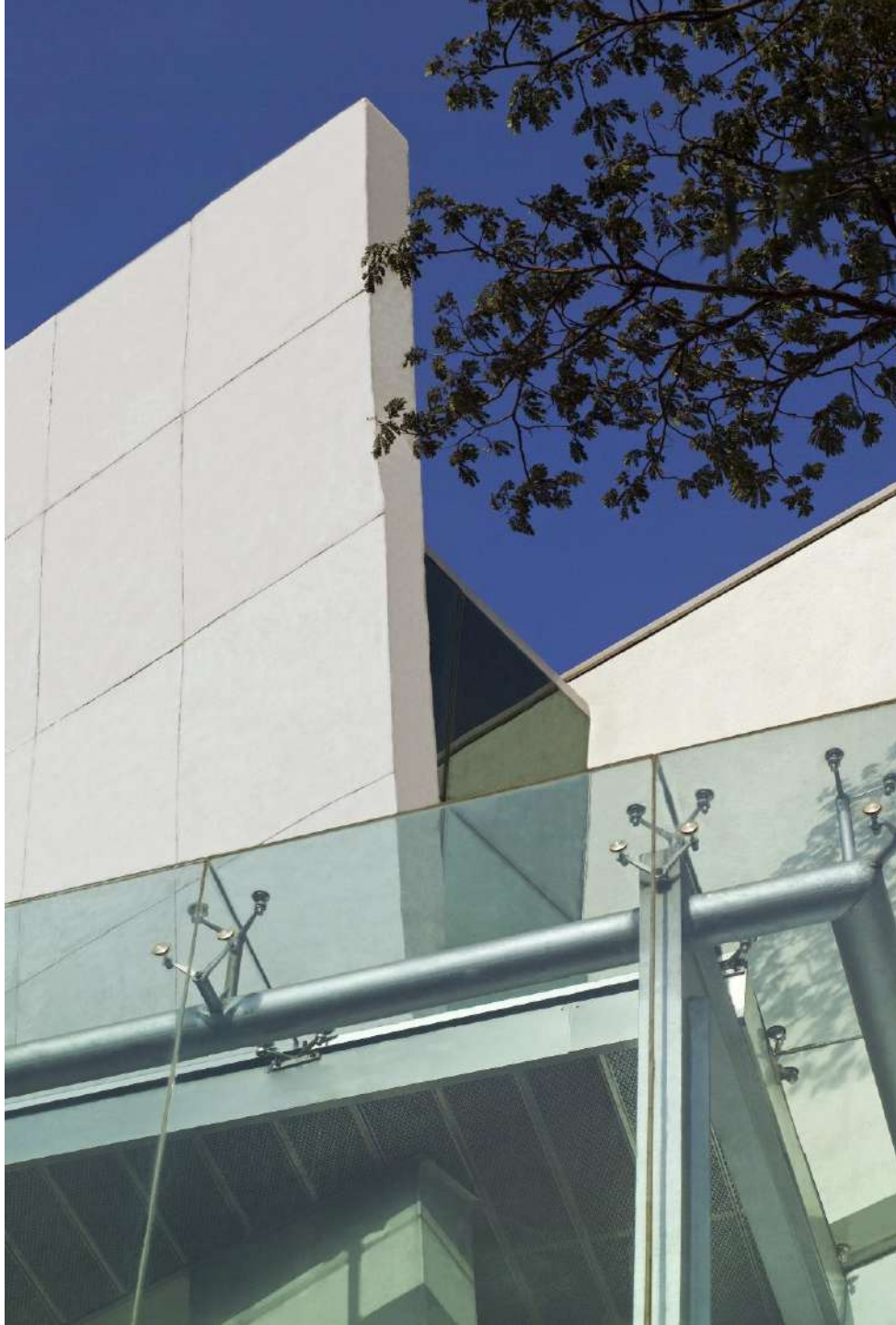












## Altana Pharma Research Center

Pune





**LEGEND**

- |                      |                     |                    |
|----------------------|---------------------|--------------------|
| 1. Foyer             | 5. P.A. to Director | 11. Office         |
| 2. Waiting           | 6. Deputy Director  | 12. First Aid Room |
| 3. Meeting Room      | 7. Pantry           | 13. Library        |
| 4. Clinical Research | 8. Laboratory Space | 14. Canteen        |
| Director             | 9. Breakout Space   | 15. Kitchen        |
|                      | 10. Cubicles        | 16. Court          |





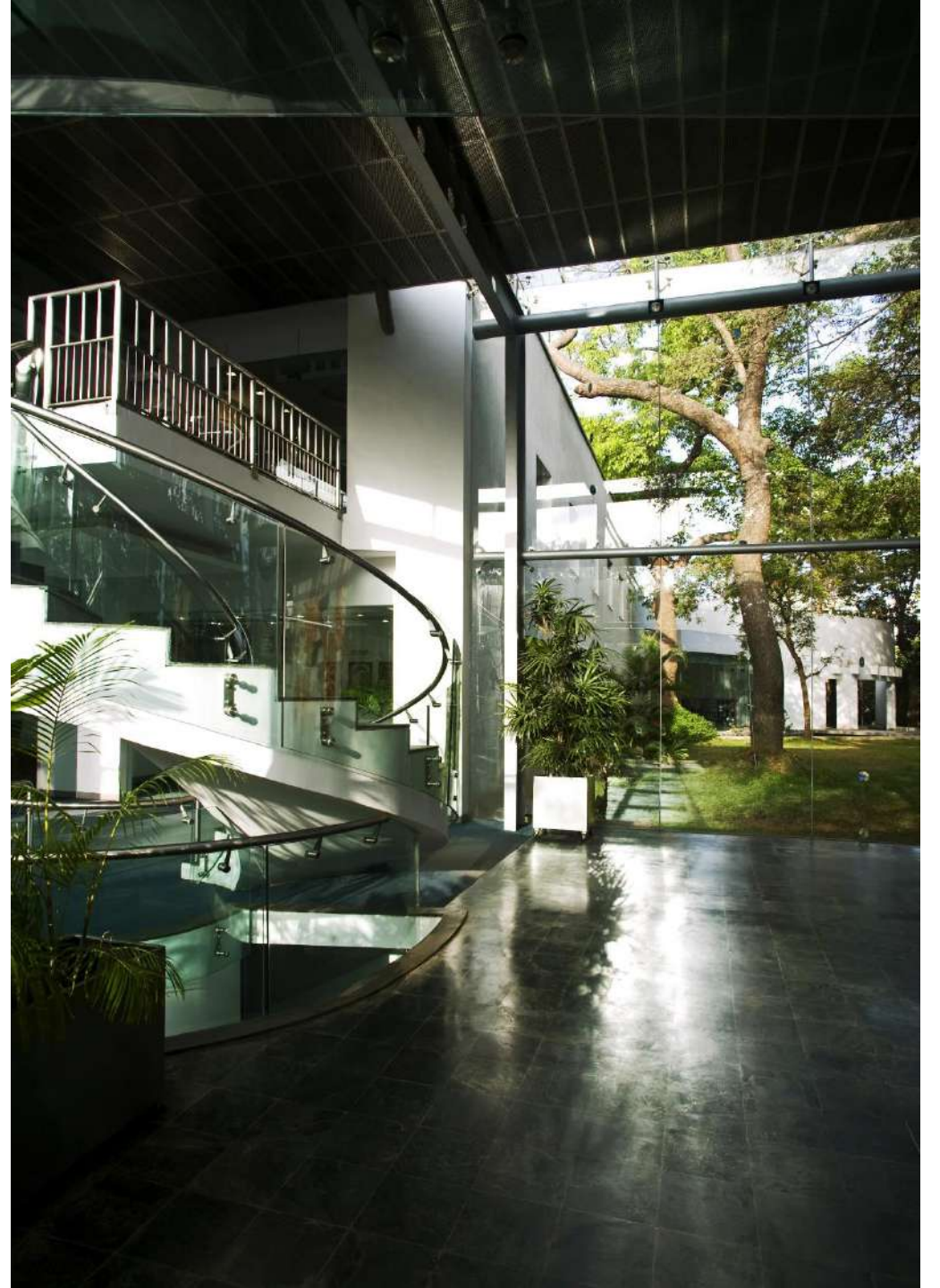
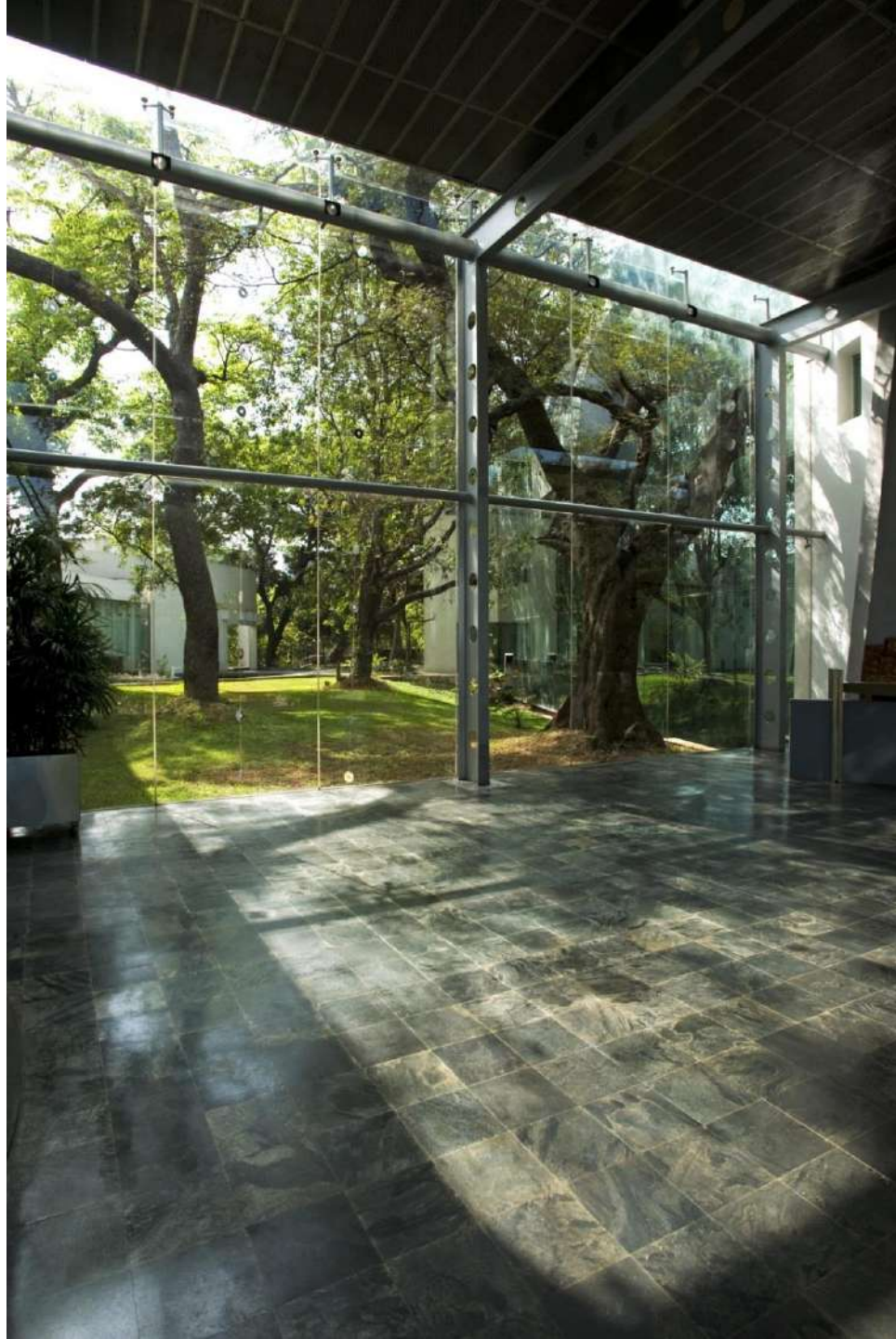




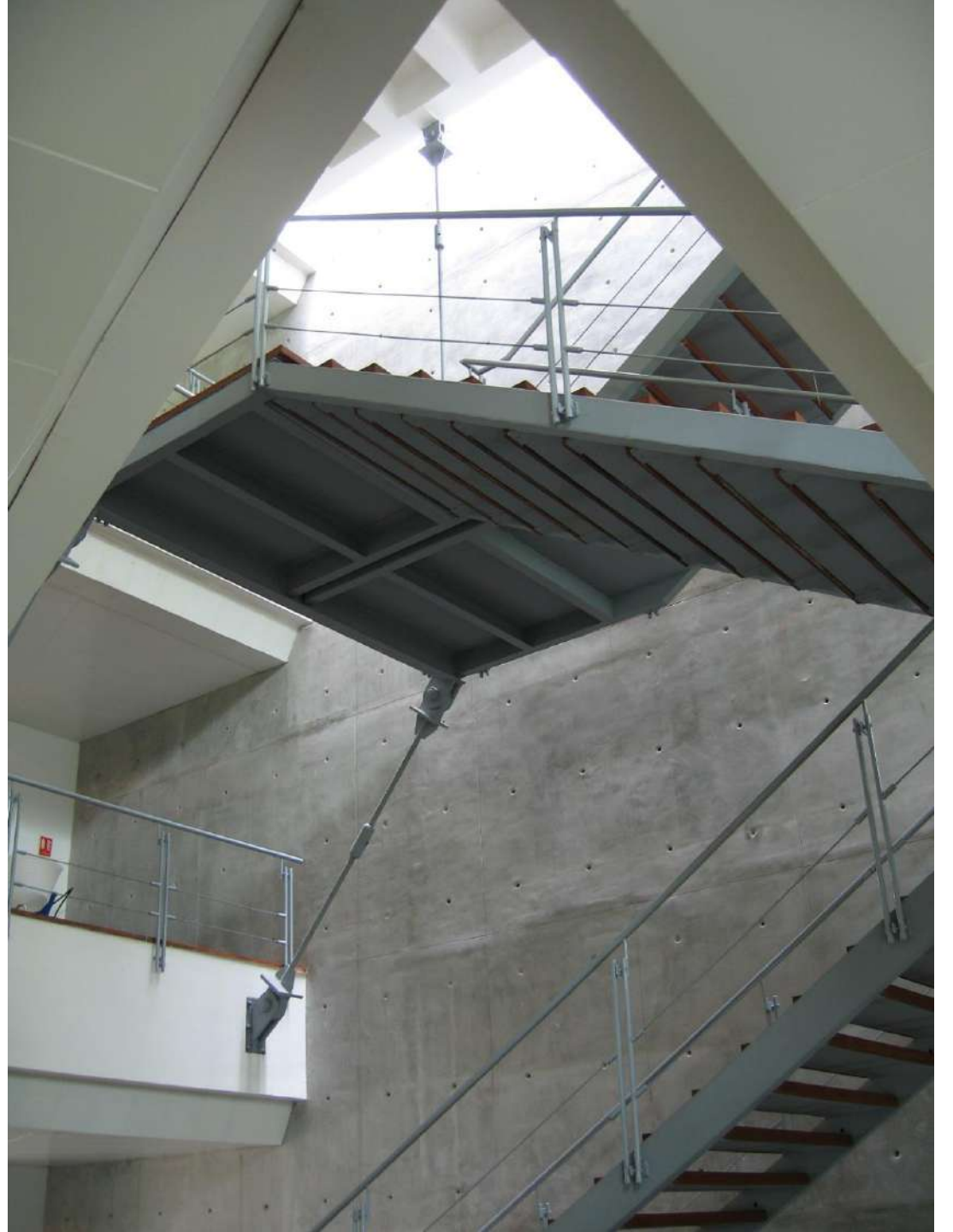




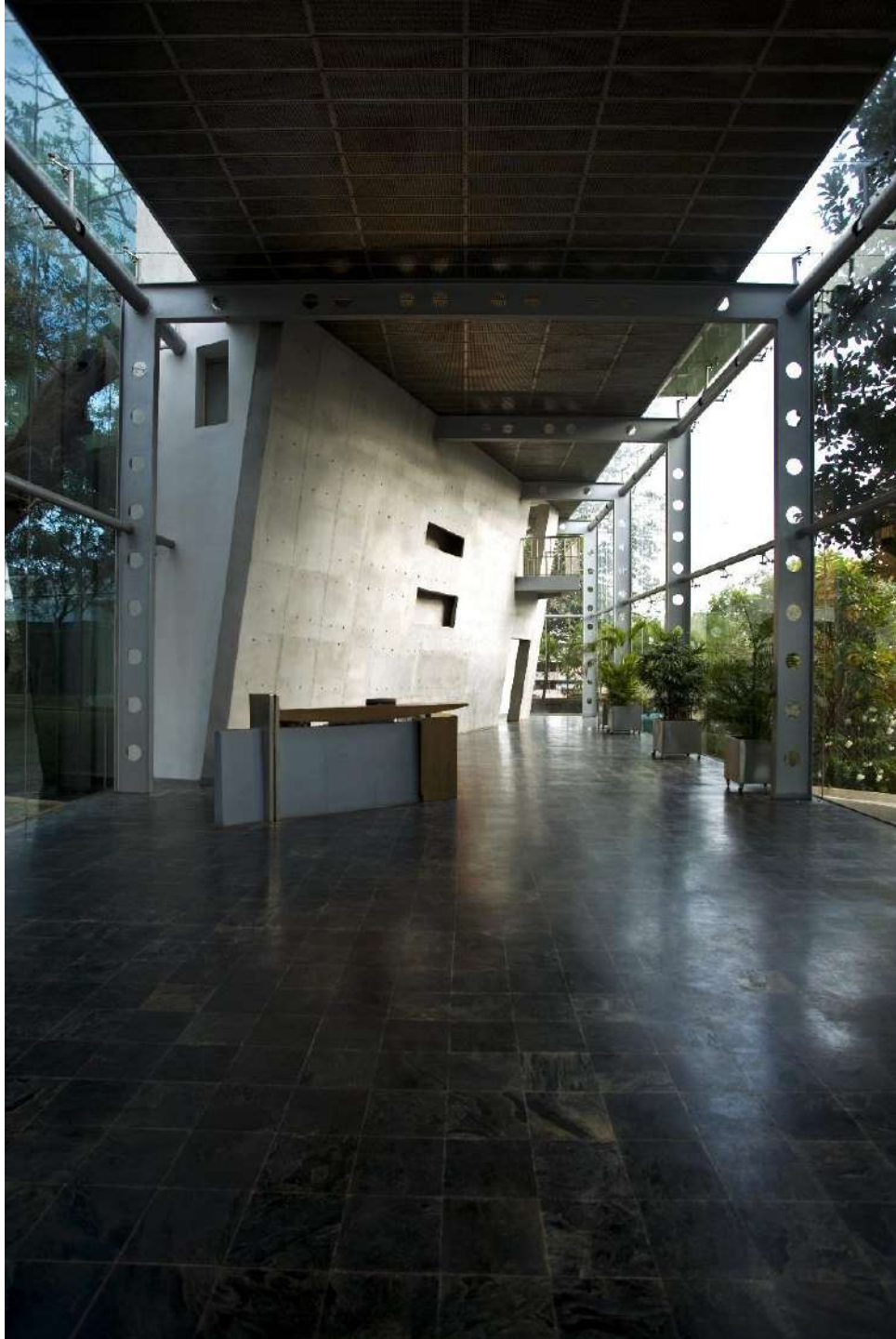




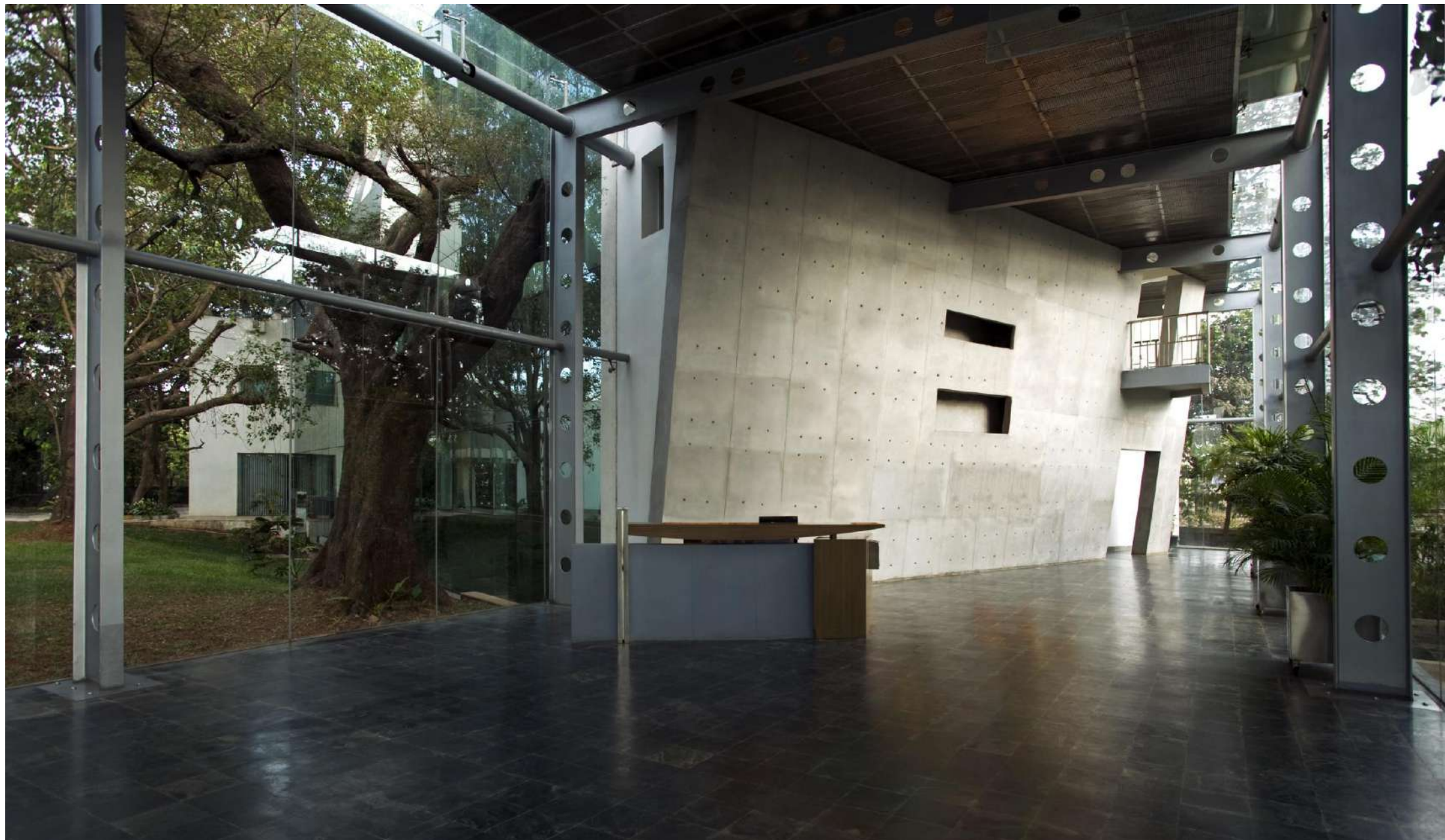




















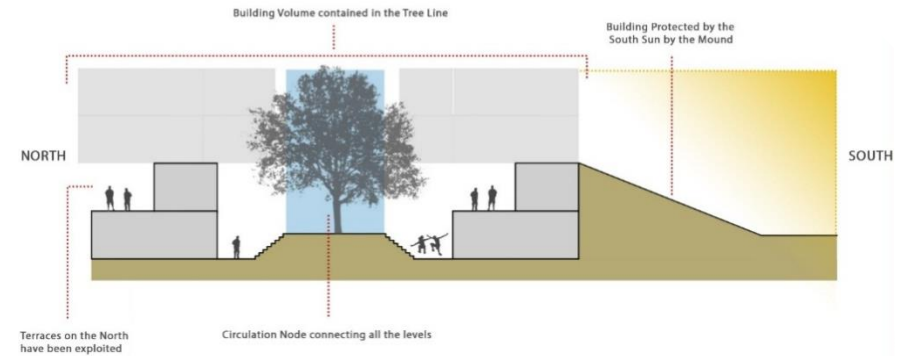
# Ahmedabad International School 1

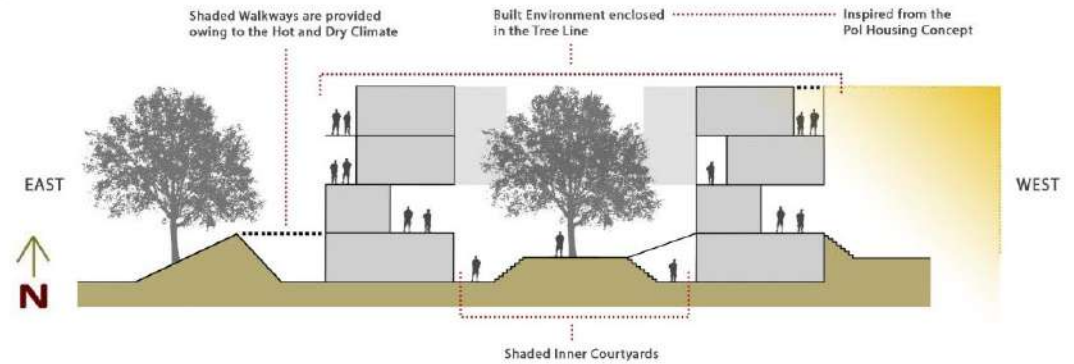
Ahmedabad





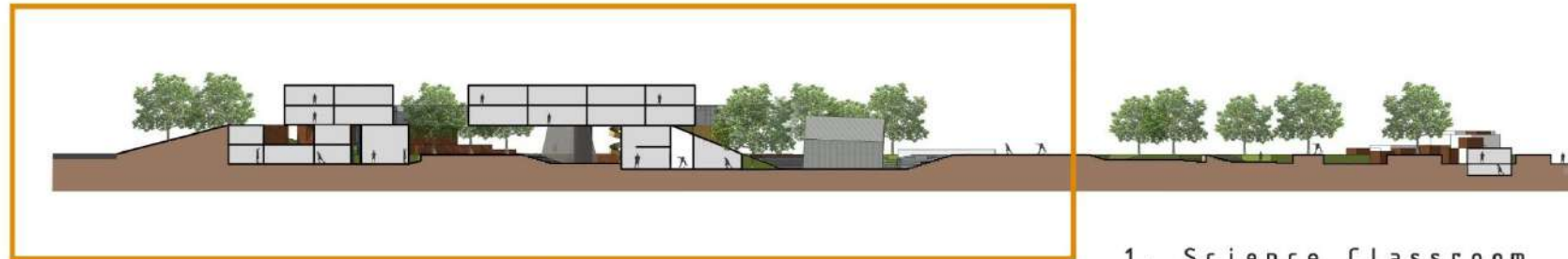
1. Classroom
2. Teachers' lounge
3. Workshop
4. Laboratory
5. Makers Space
6. Library
7. Student lounge
8. Administration
9. Parents lounge
10. Cafeteria
11. Teal office
12. Squash court
13. Badminton court
14. Swimming pool
15. Residential area
16. Central courtyard, Kund
17. Courtyard
18. Football field



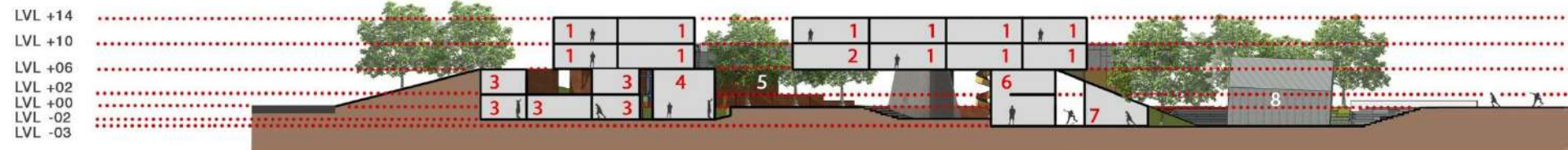




# SECTION ALONG THE "AXIS"



- 1. Science Classroom
- 2. Science Lab
- 3. English Classroom
- 4. Science Workshop
- 5. Inner Courtyard
- 6. Library
- 7. Teachers' Lounge
- 8. Bindu Courtyard



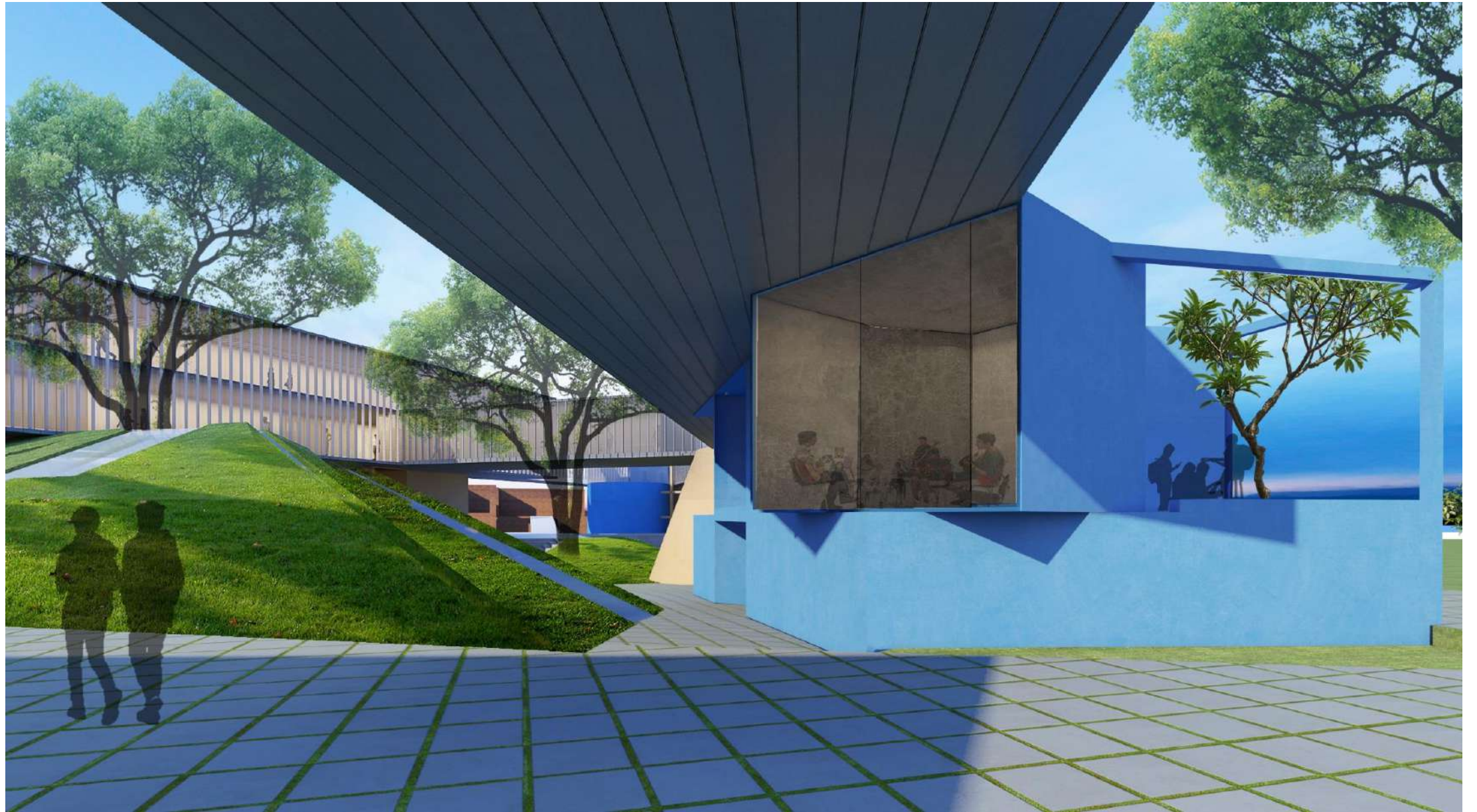












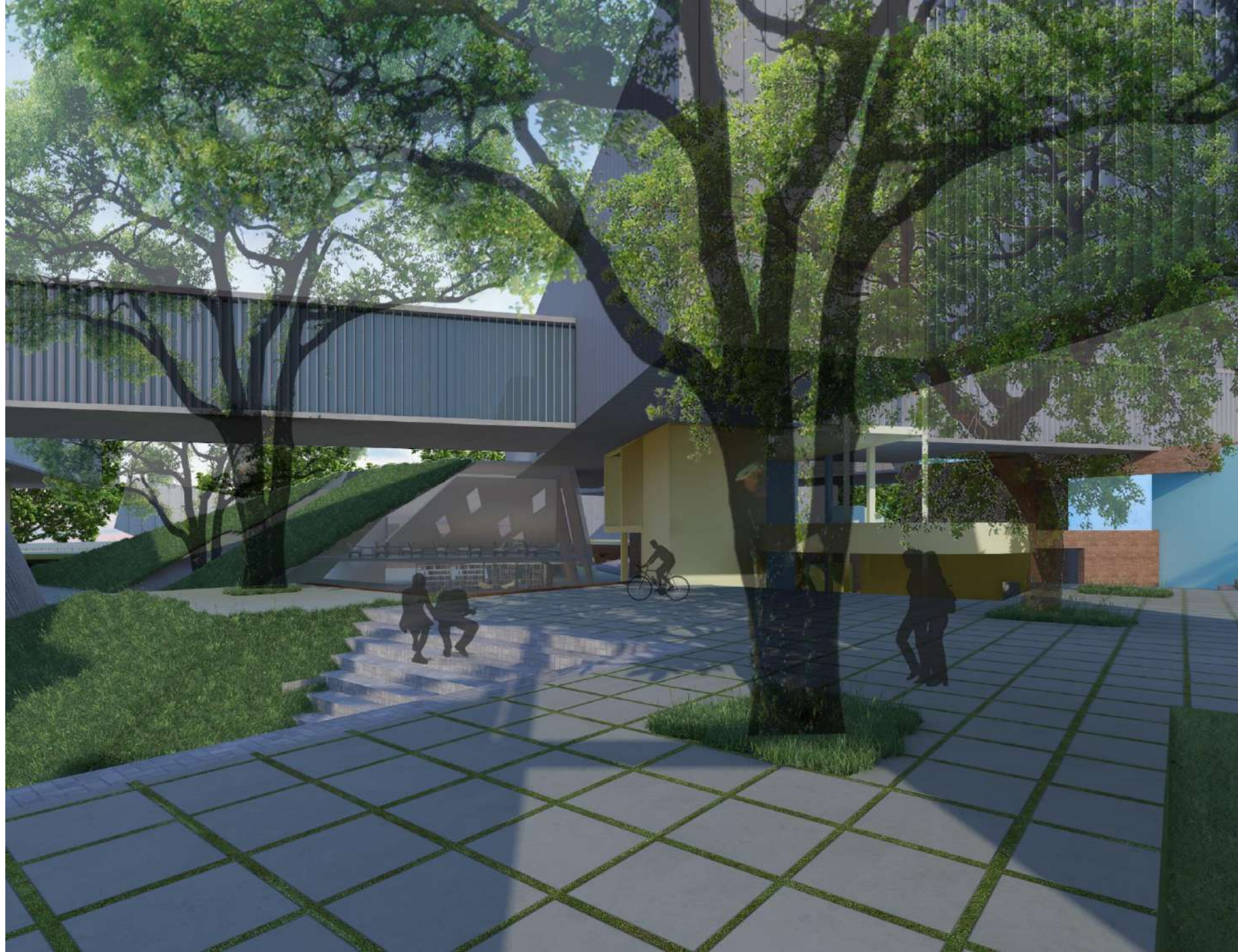


















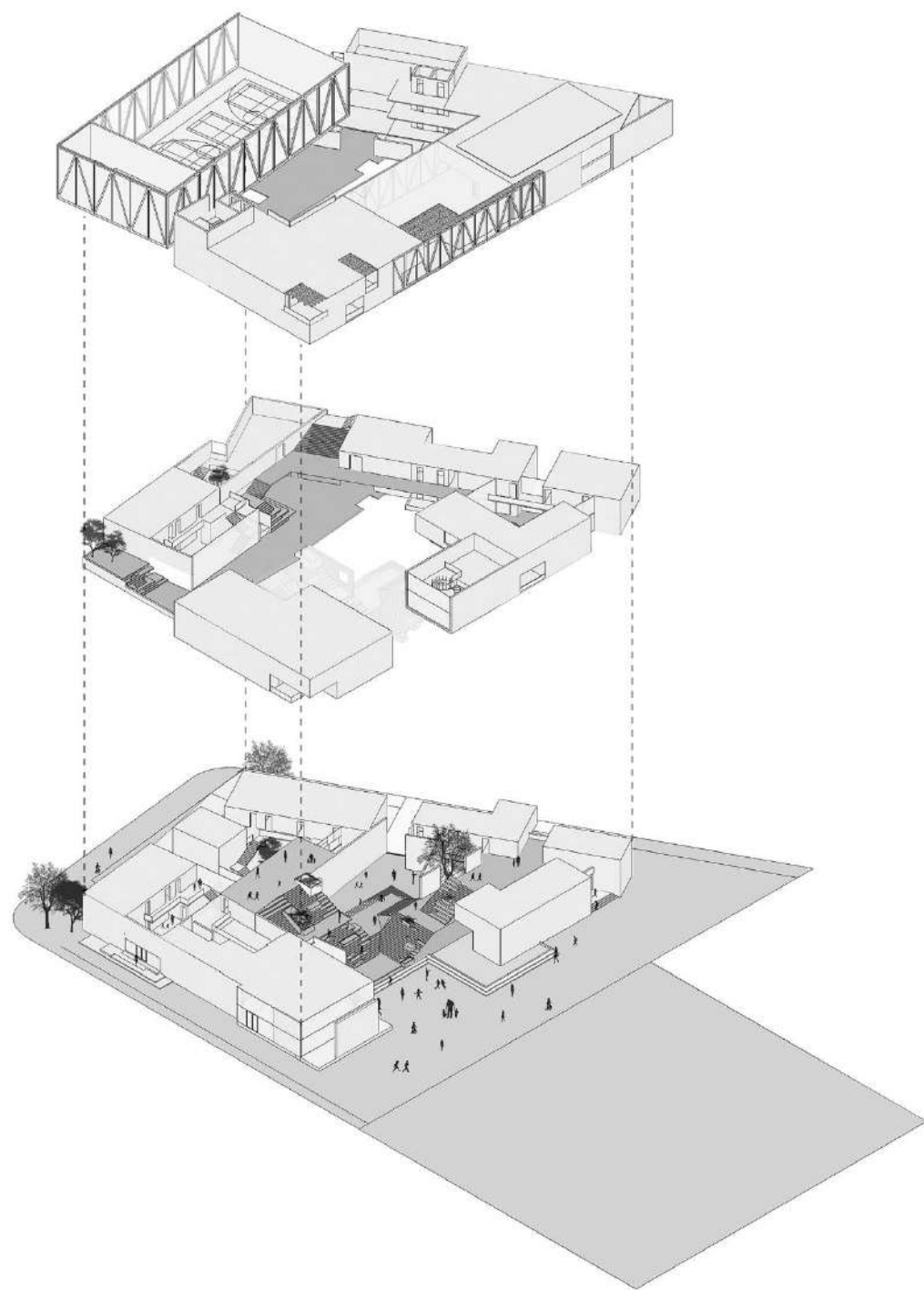


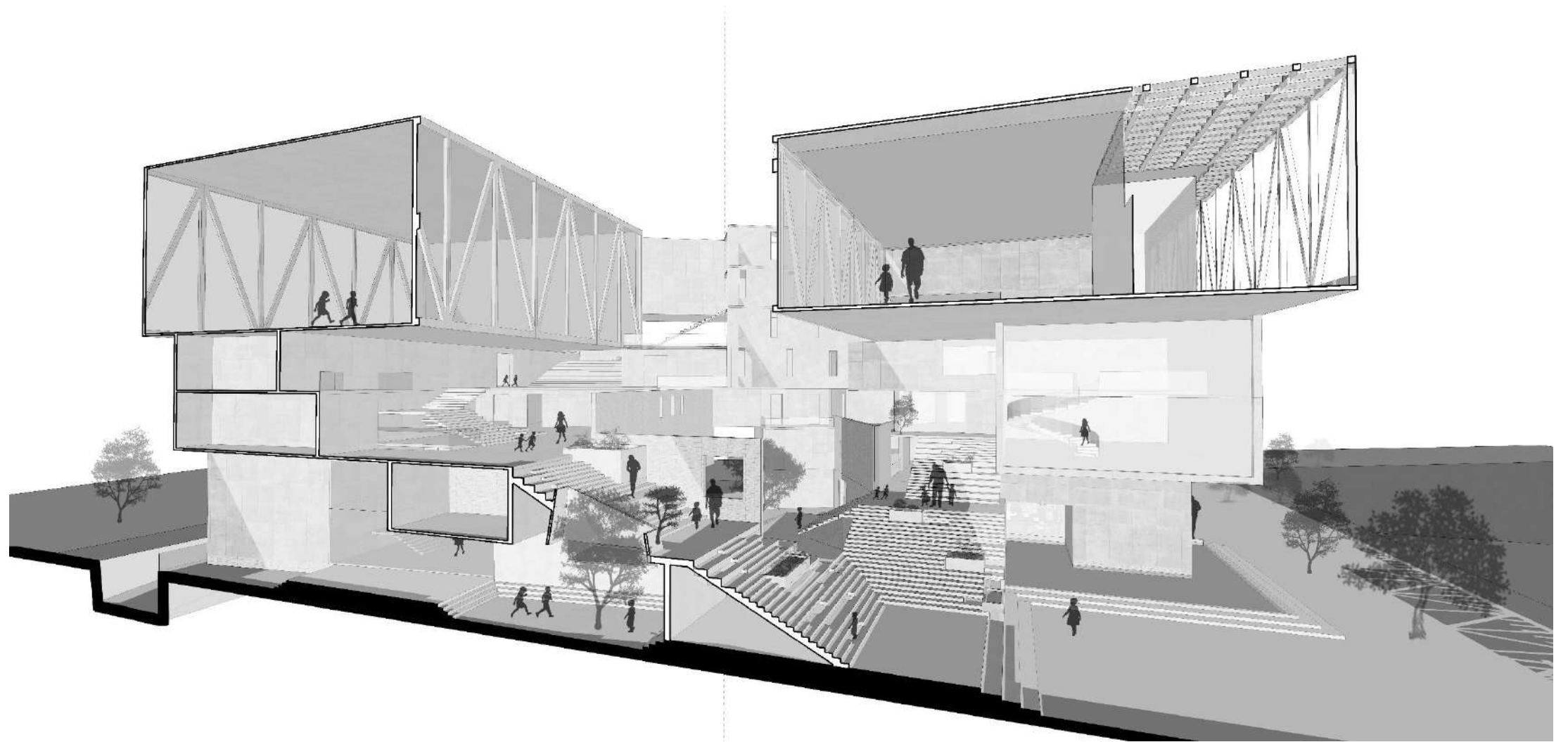
## Ahmedabad International School 2

Ahmedabad

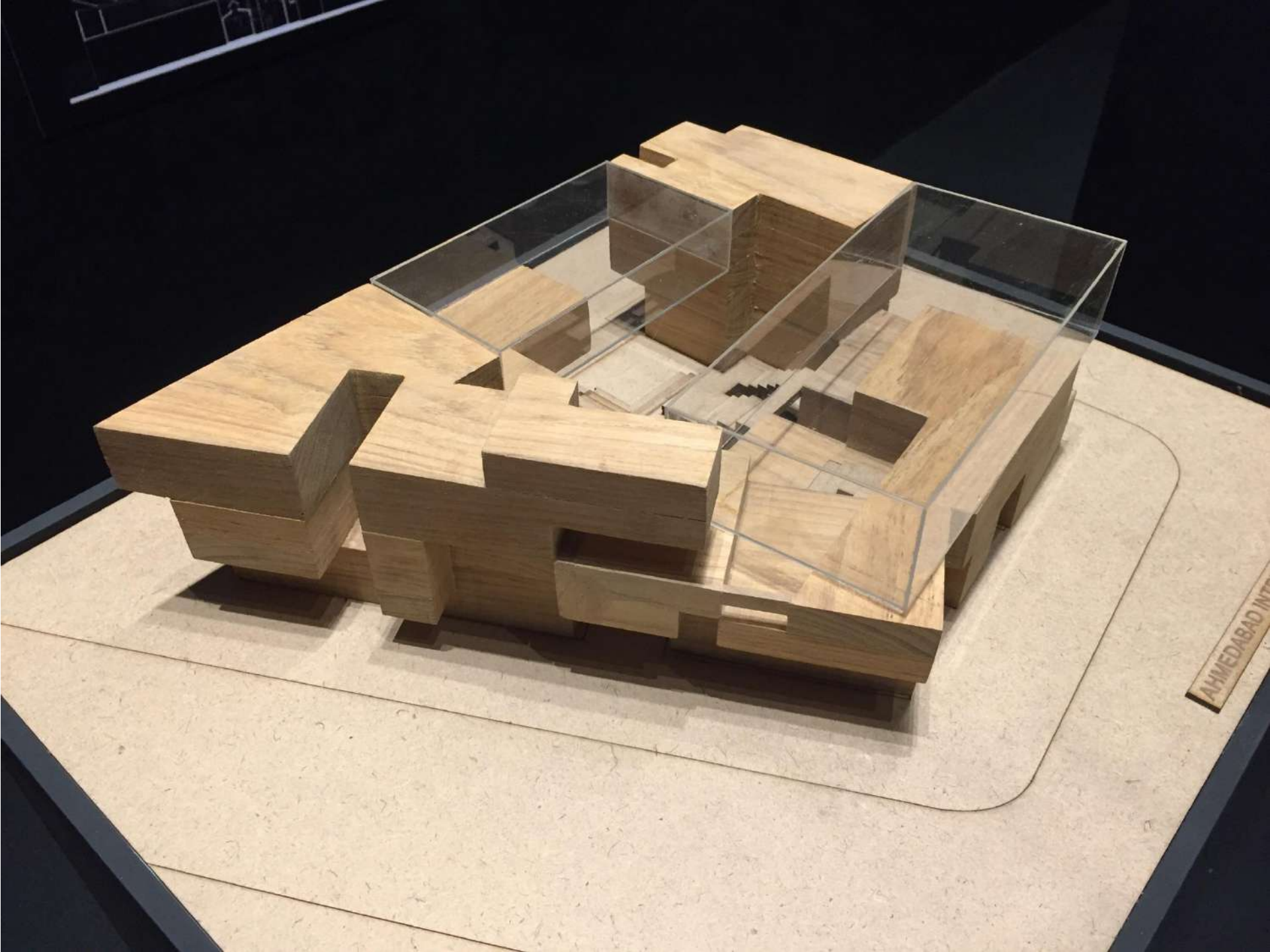


















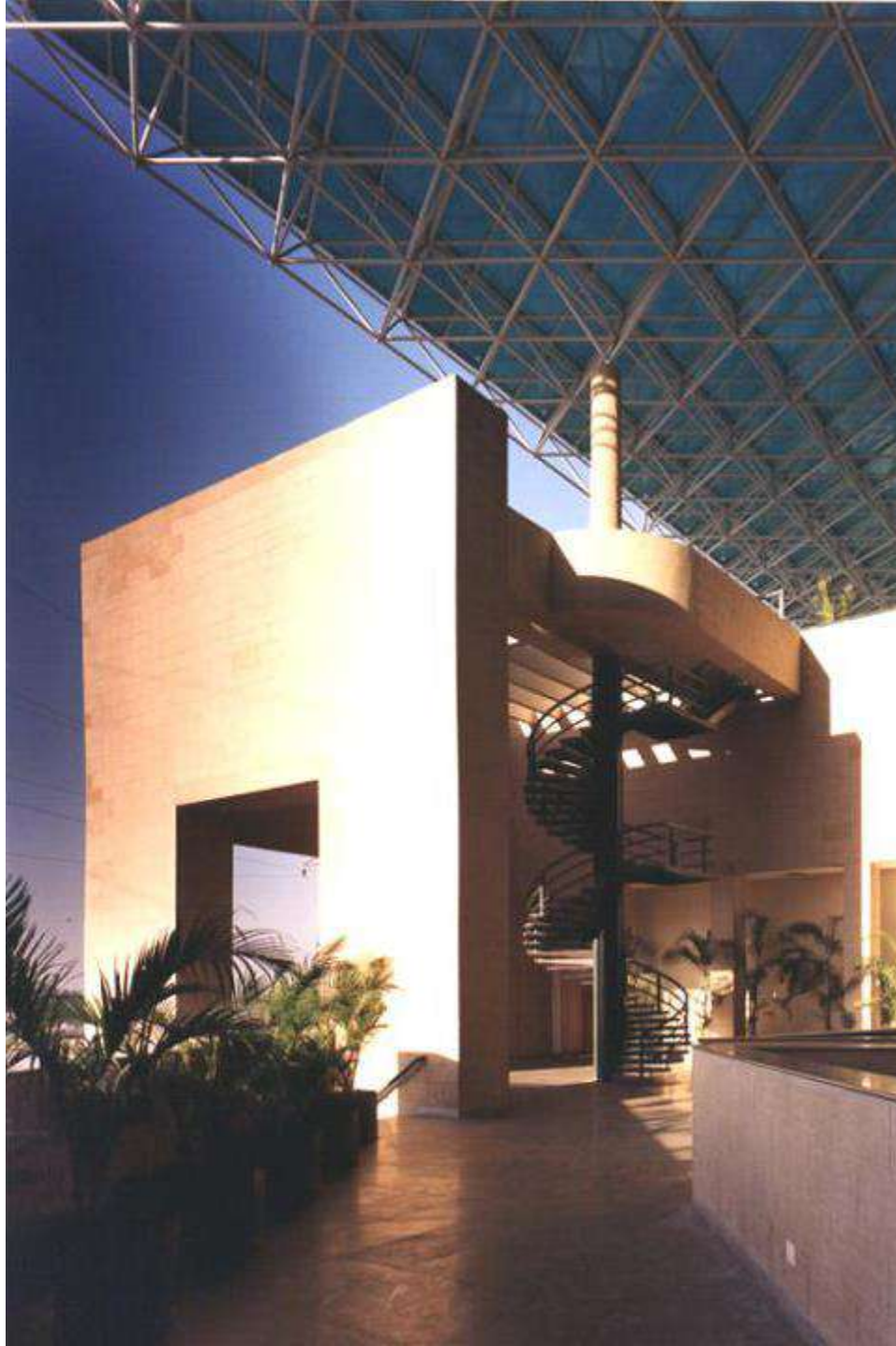








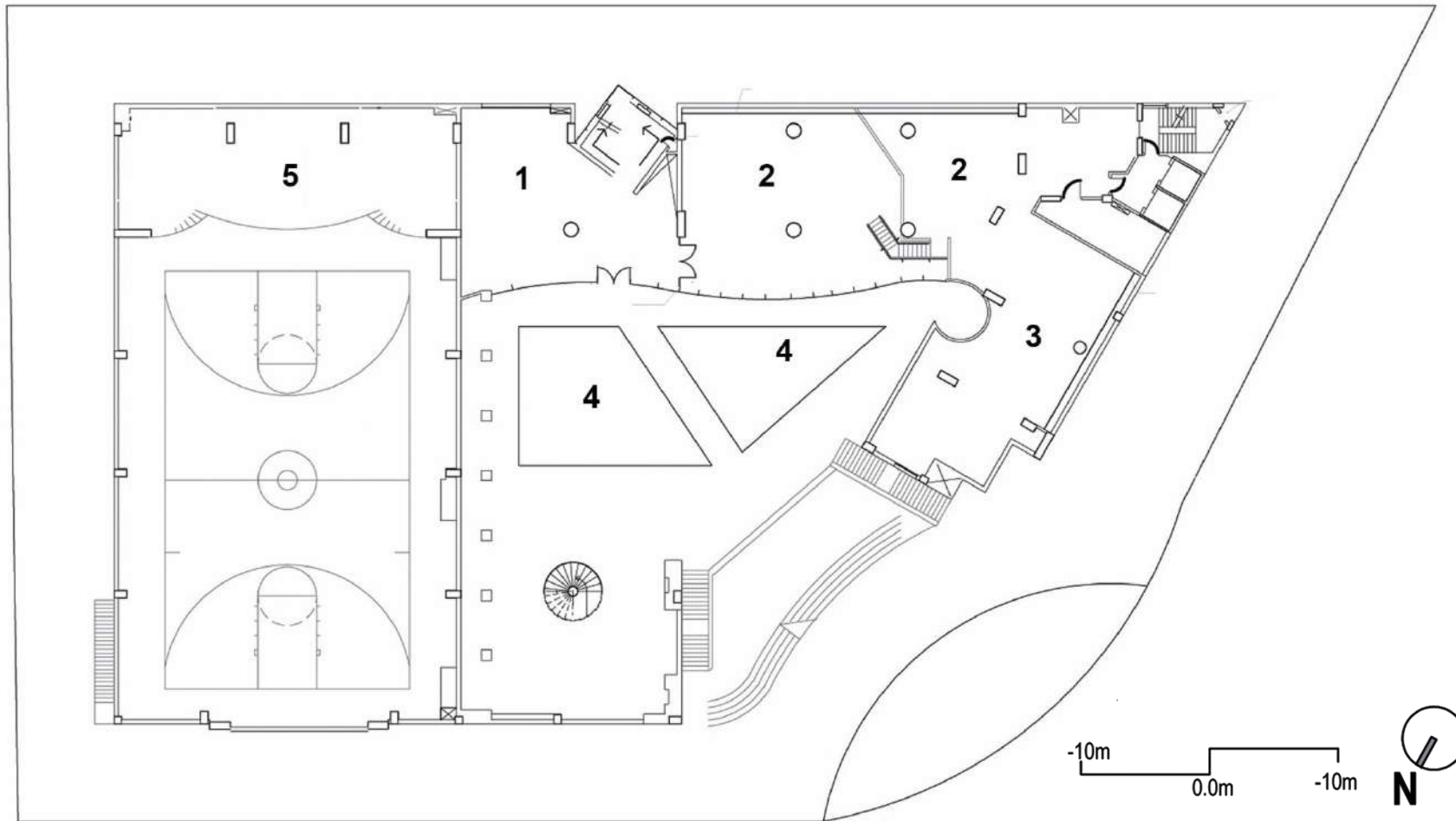




## American School

Mumbai

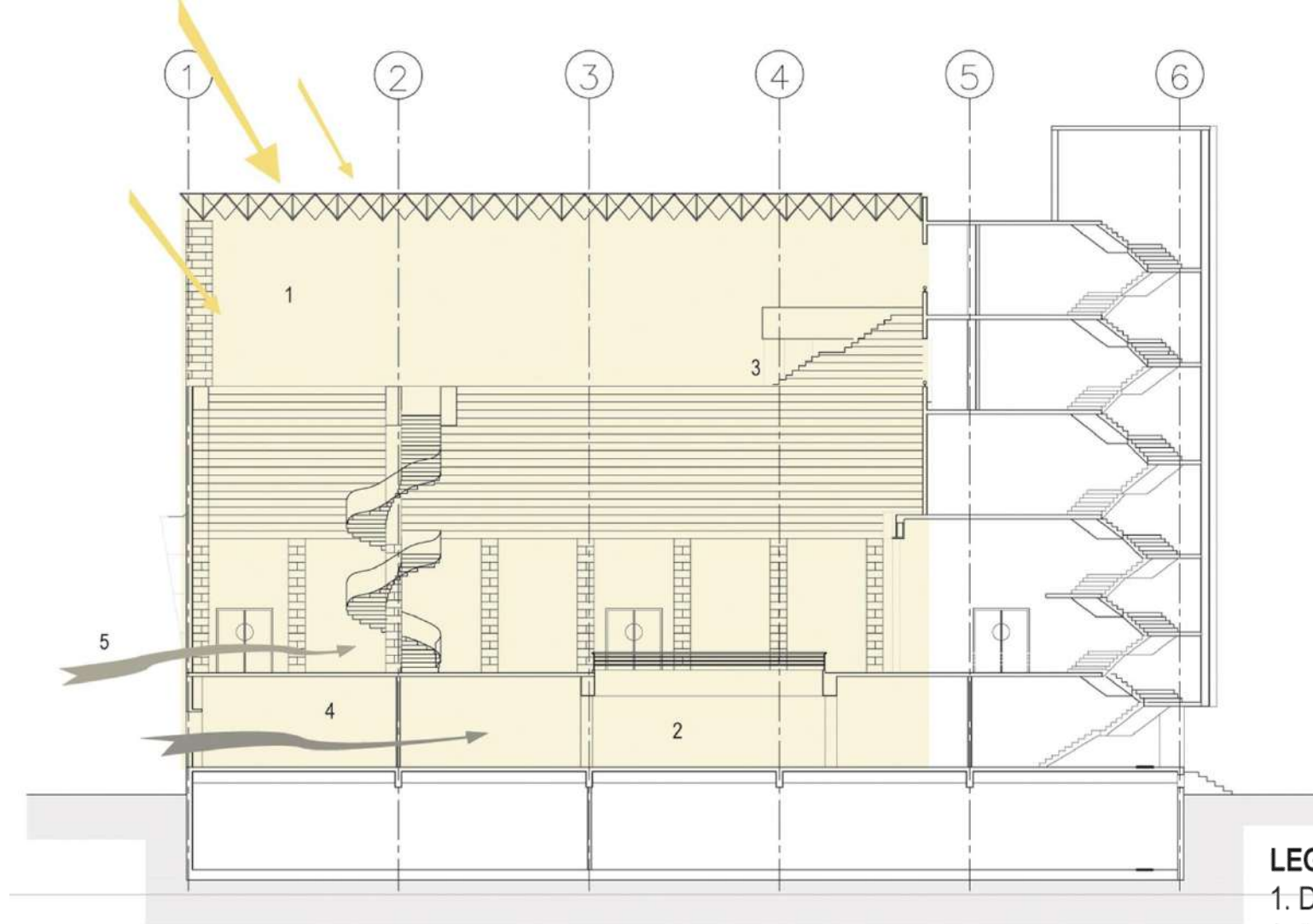




UPPER LEVEL PLAN- EXISTING SCHOOL

# LEGEND

- 1. Multipurpose Hall
- 2. Library
- 3. Admin. Office
- 4. Cut-Out
- 5. Stage & Dressing Rms.



**TRANSVERSE SECTION- EXISTING SCHOOL**

**LEGEND**

- 1. Daylight suffuses the Court
- 2. Diffused light enters the lower levels through the cut-out
- 3. Cafeteria (under the space frame)
- 4. Younger students enter on-grade
- 5. Older students enter on the upper level



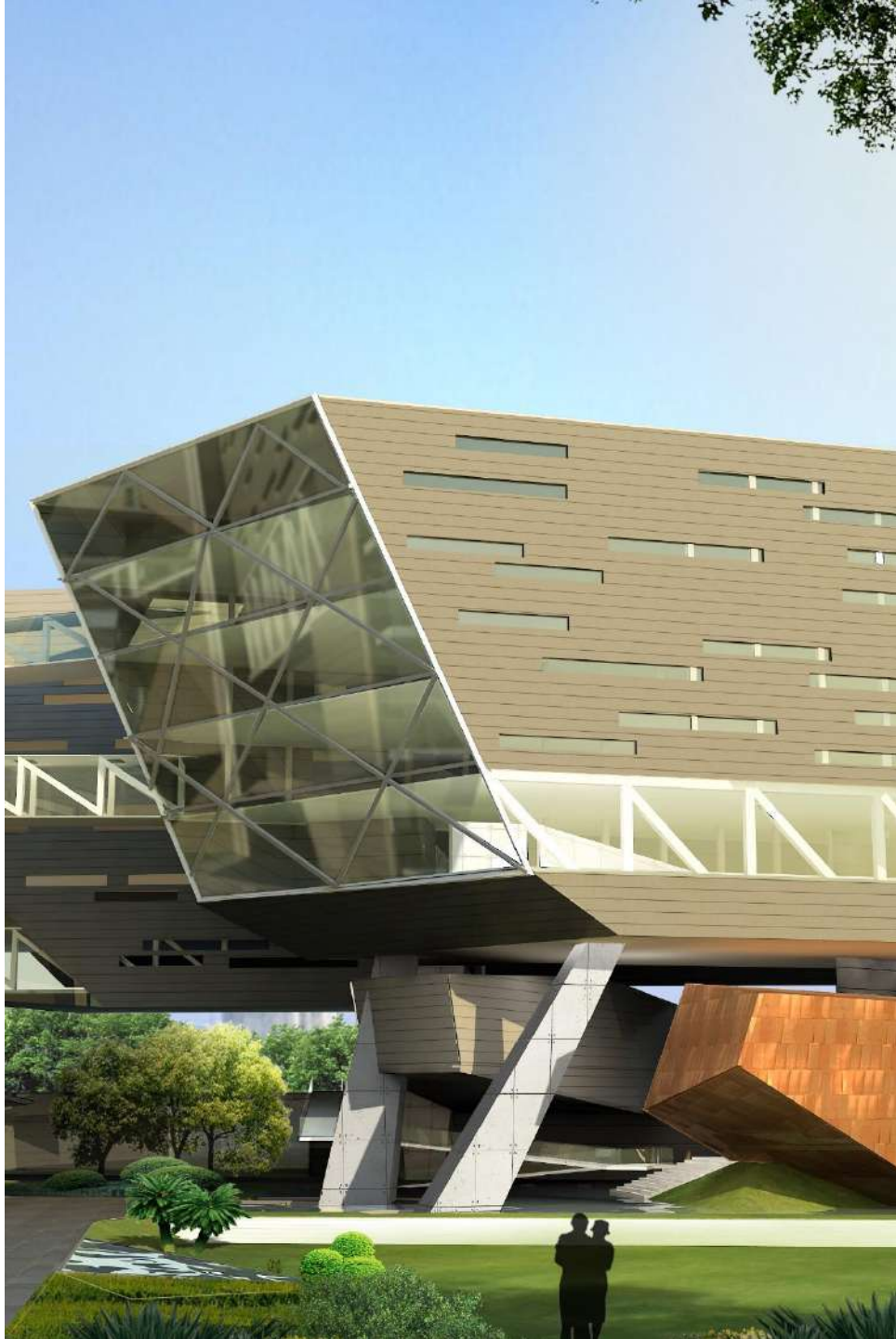












## Cipla R&D Park

Pune





GROUND FLOOR PLAN

**LEGEND**

- 1. Main Atrium
- 2. Conference Center
- 3. Main Cafe
- 4. Employee Entry
- 5. Auditorium

-10m    0.0    +10m





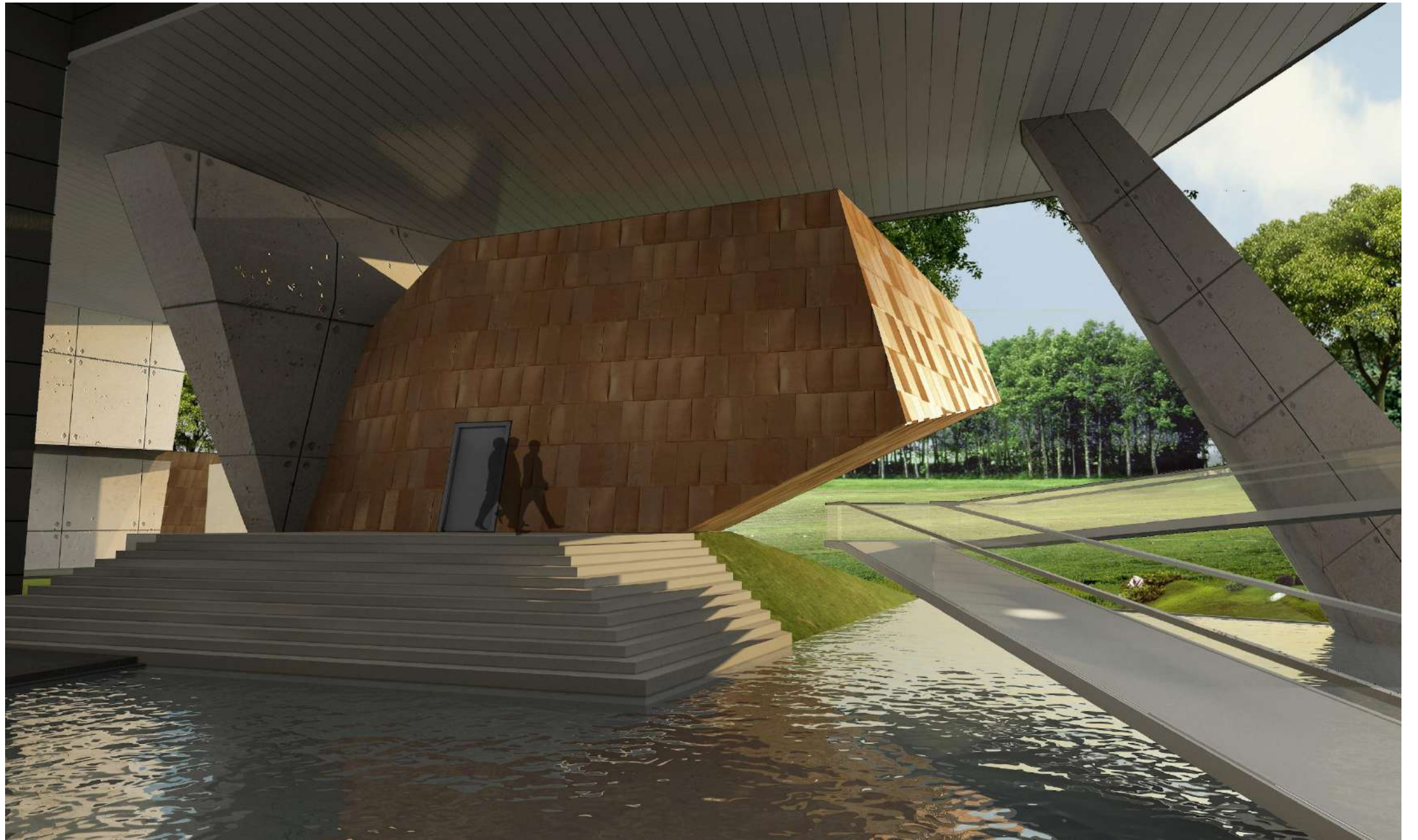




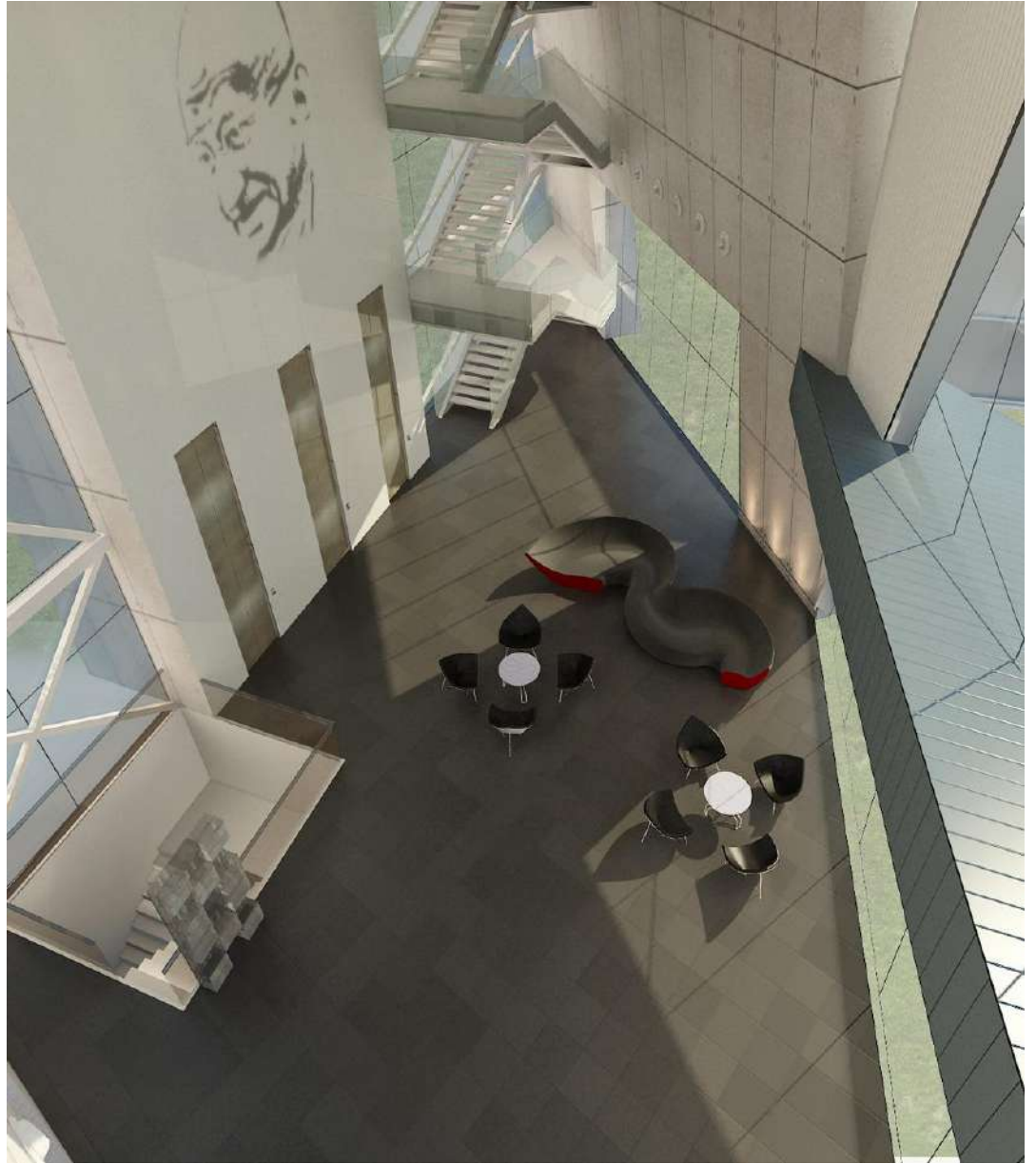
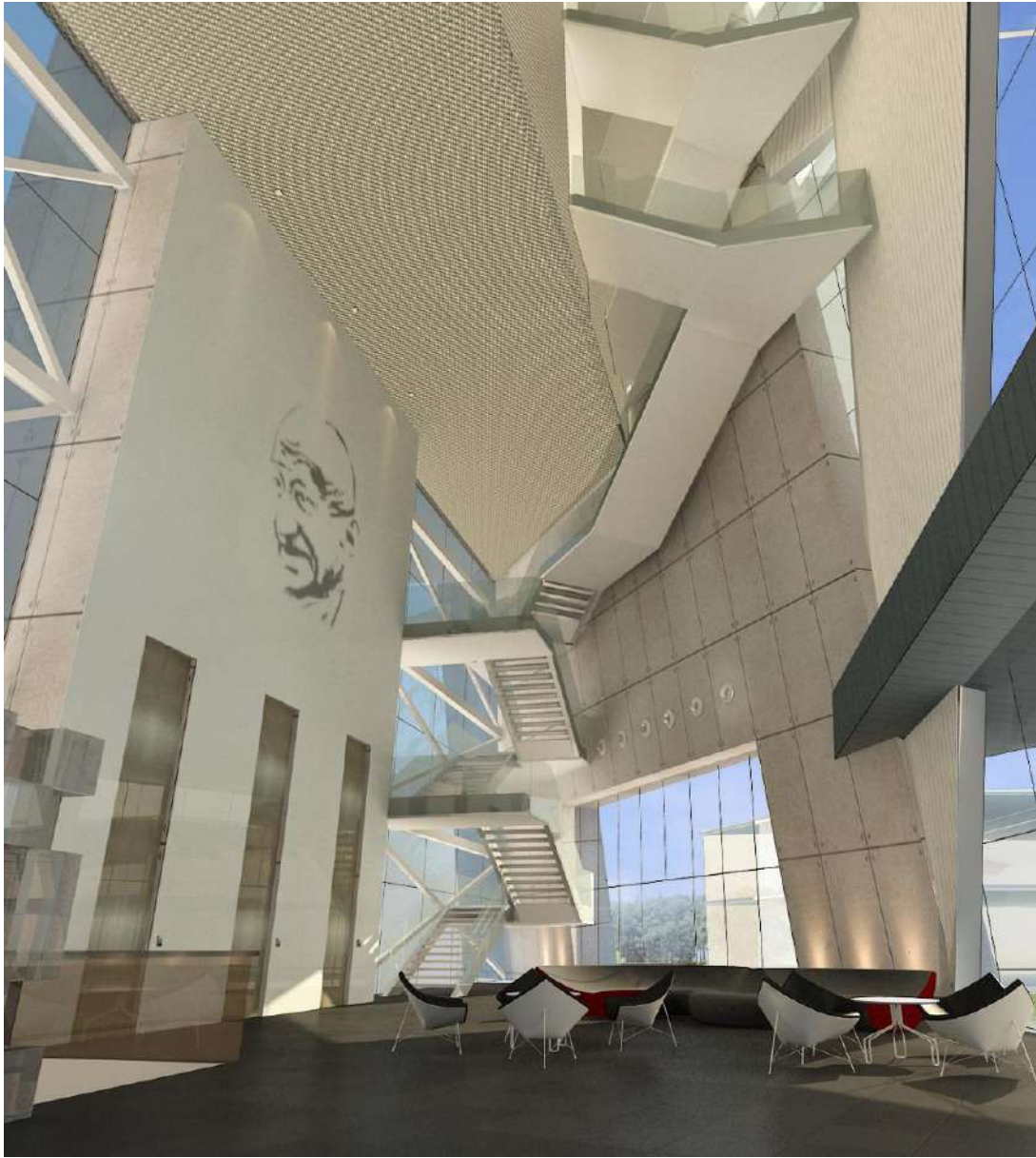






























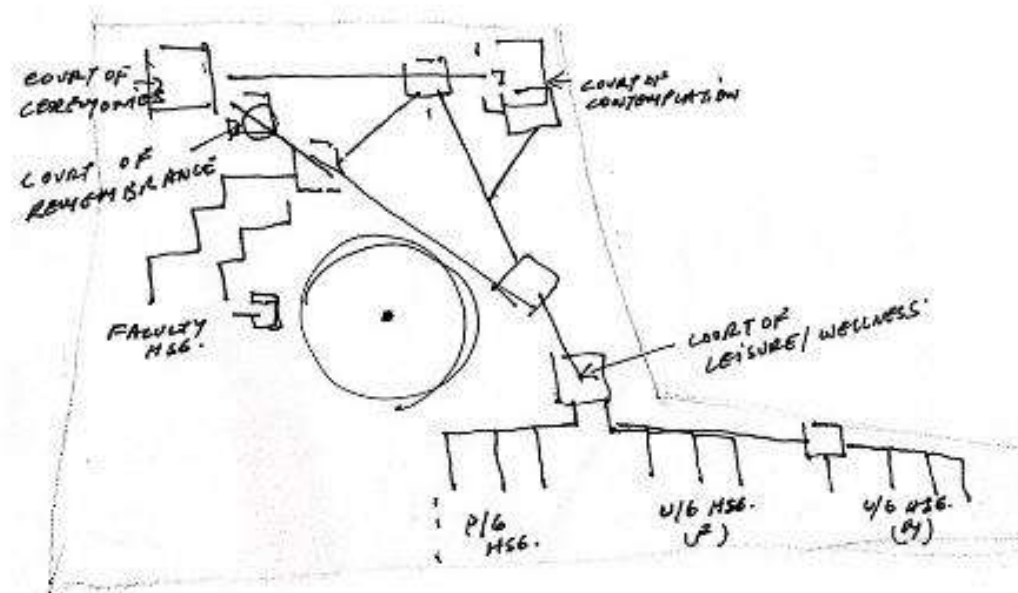
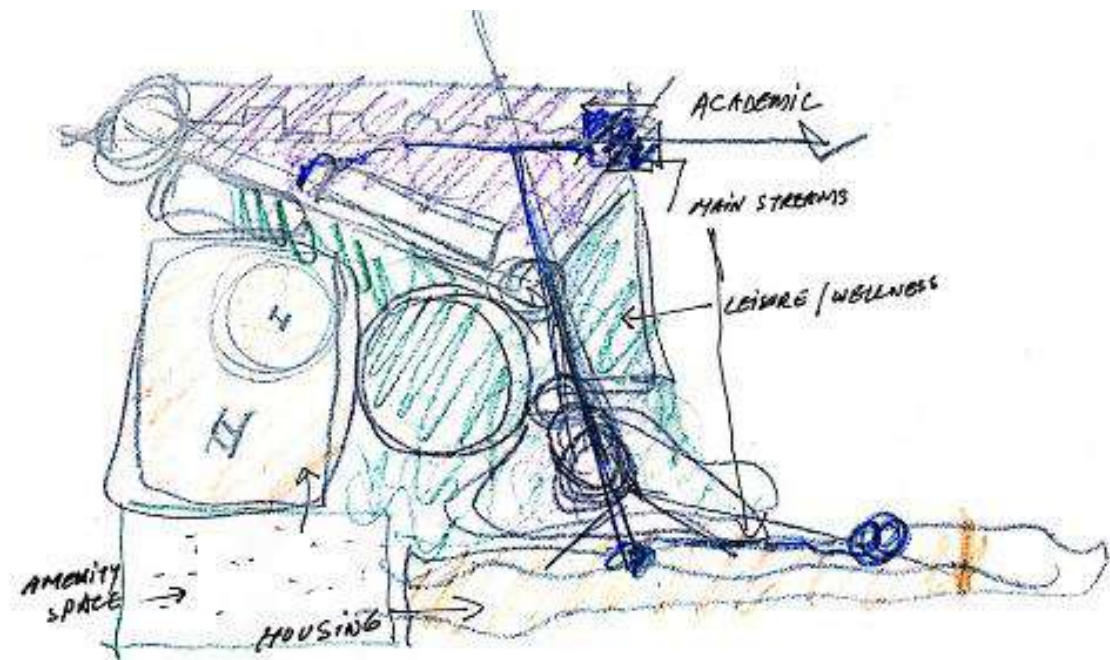




## Maharashtra National Law University

Nagpur





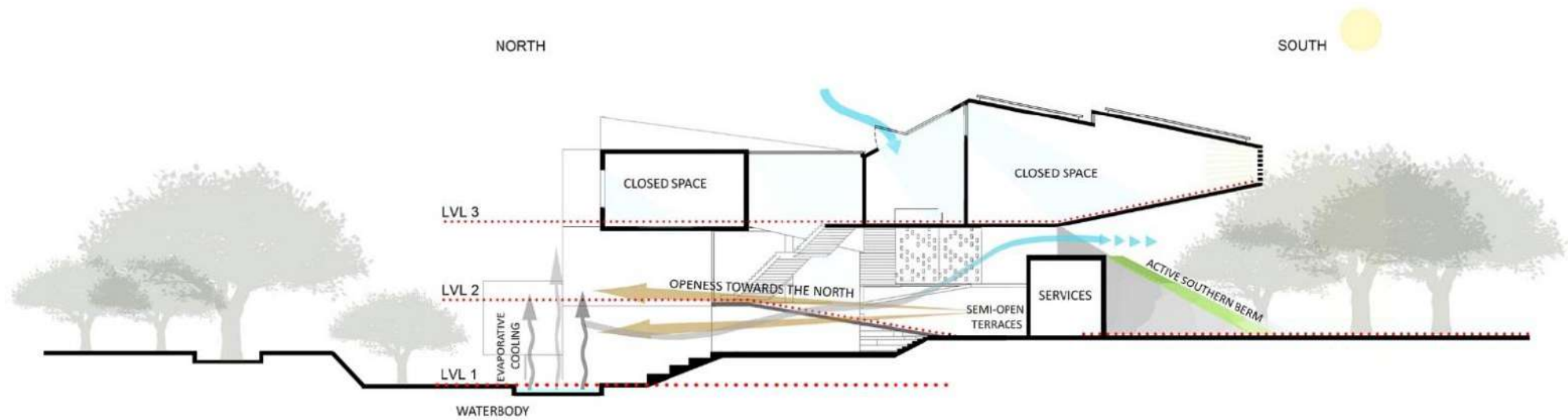
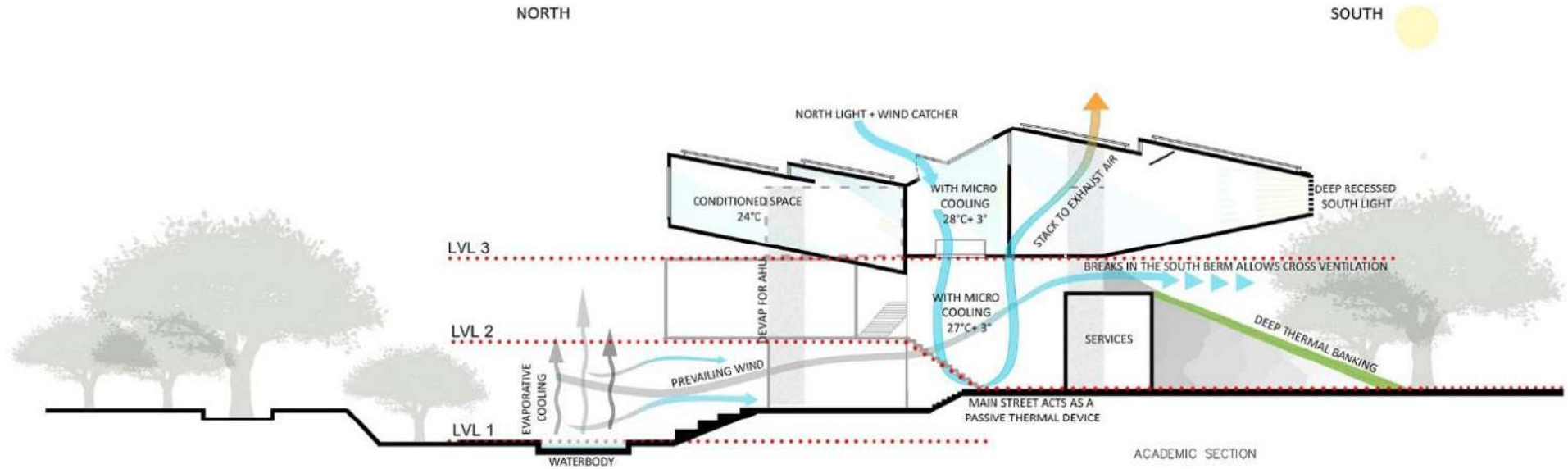


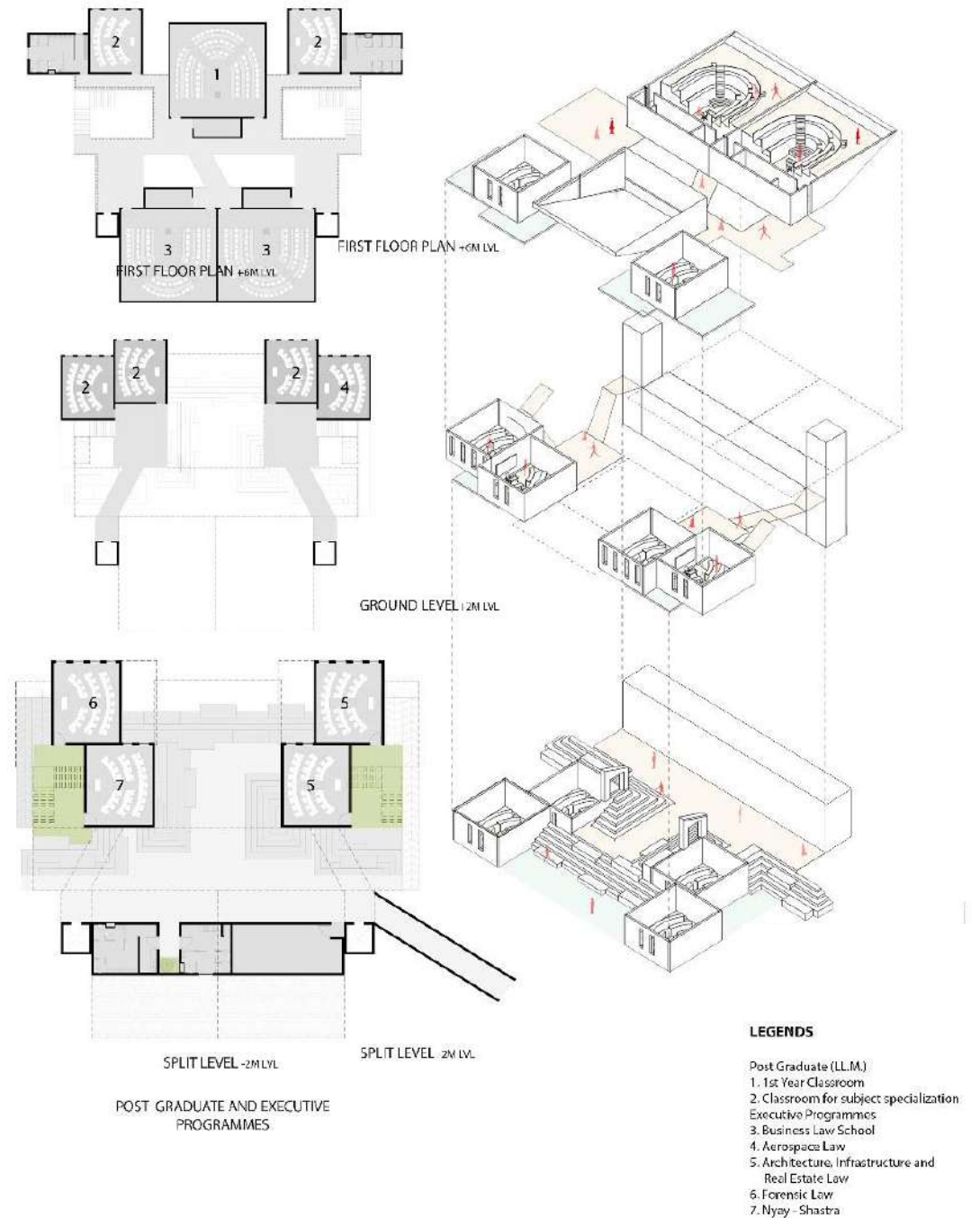
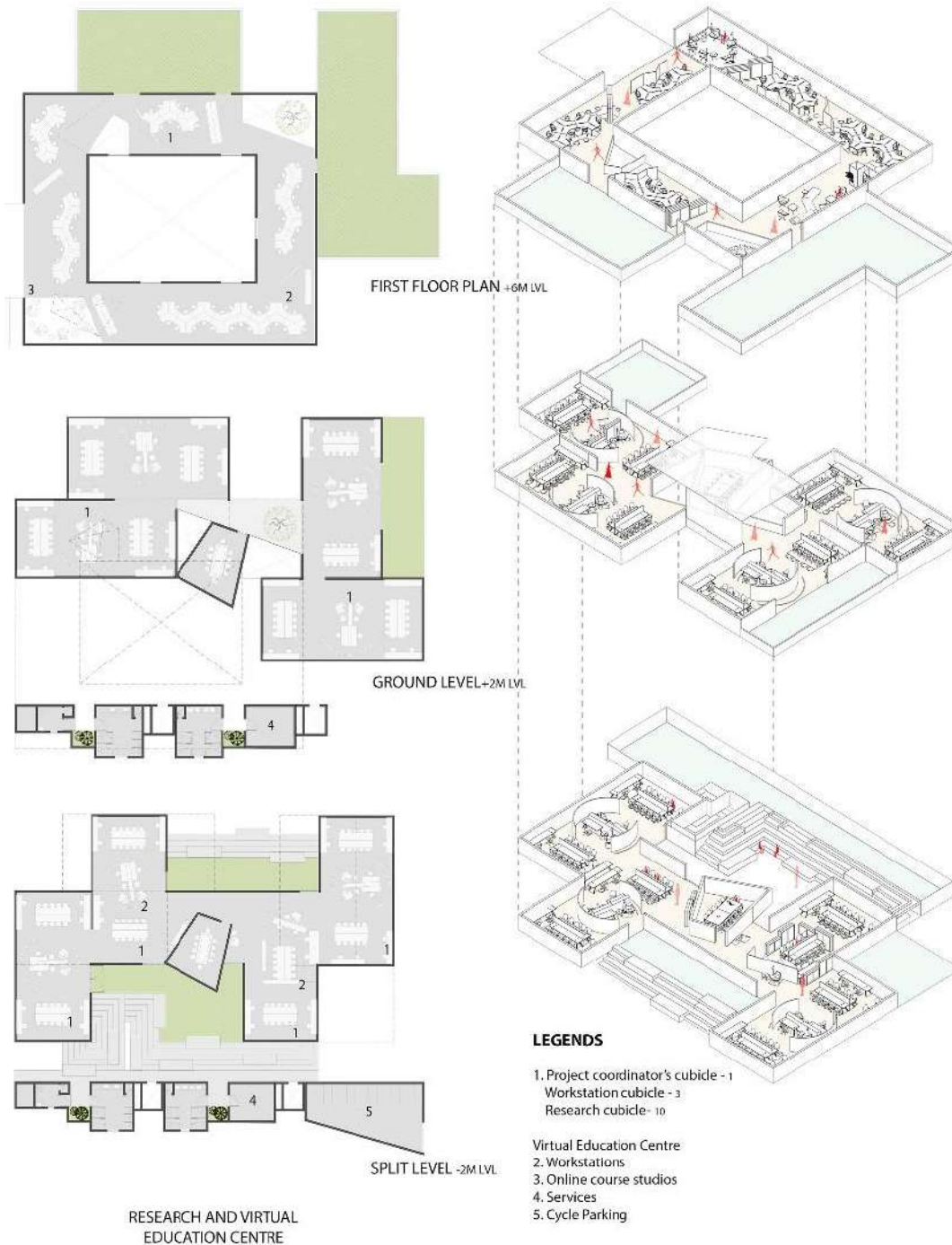
LEGEND :

- A - COURT OF CEREMONIES
- B - COURT OF REMEMBRANCE
- C - COURT OF CONTEMPLATION
- D - COURT OF WELLNESS / LEISURE

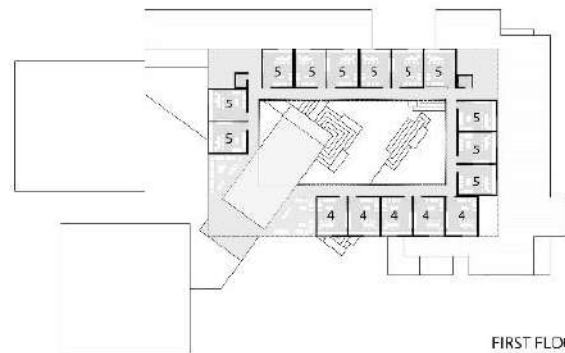
- 1 ENTRANCE PLAZA
- 2 KIRTI STAMBH
- 3 LAW MUSEUM / EXPERIENCE CENTER
- 4 ADMINISTRATION BLOCK
- 5 AUDITORIUM / MULTIPURPOSE HALL
- 6 CONVENTION CENTER / GUEST HOUSE
- 7 MOOT COURT
- 8 ACADEMIC BLOCK - B.SC.LLB
- 9 ACADEMIC BLOCK - B.A.LLB
- 10 ACADEMIC BLOCK - B.OM.LLB
- 11 JUDICIAL COLLEGE - PHASE 2
- 12 FACULTY BLOCK
- 13 CONFERENCE ROOMS
- 14 POST GRADUATE / EXECUTIVE PROGRAMME
- 15 RESEARCH AND VIRTUAL EDUCATION CENTRE
- 16 LIBRARY
- 17 KUND
- 18 SECULAR WORSHIP
- 19 INING / KITCHEN / CENTRAL FACILITY COMPLEX
- 20 EAT STREET / BAZAAR
- 21 NDOOR SPORTS COMPLEX
- 22 P.G. / INTERNATIONAL / RESEARCH SCHOLARS EXECUTIVE HOSTELS
- 23 U.G. GIRLS HOSTEL
- 24 U.G. BOYS HOSTEL
- 25 JUDICIAL HOSTEL - PHASE 2
- 26 V.C. / REGISTRARS RESIDENCE
- 27 ADOBE CONSTRUCTION
- 28 FACULTY HOUSING - PHASE 1



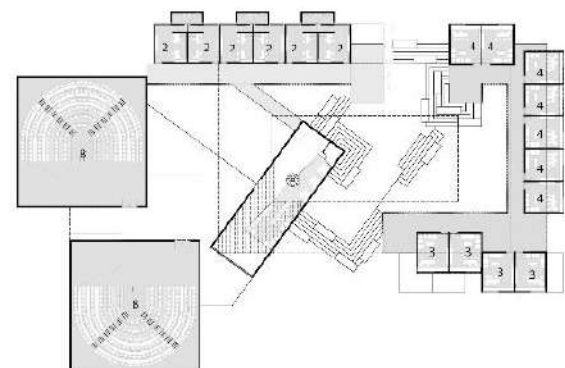




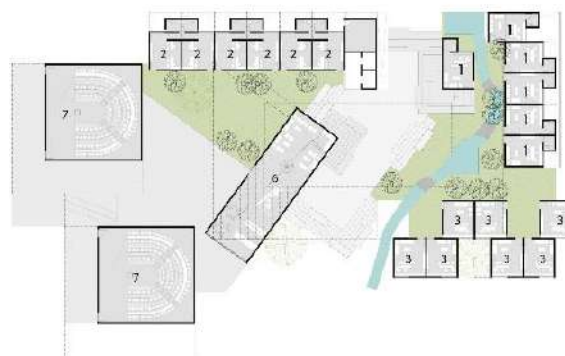




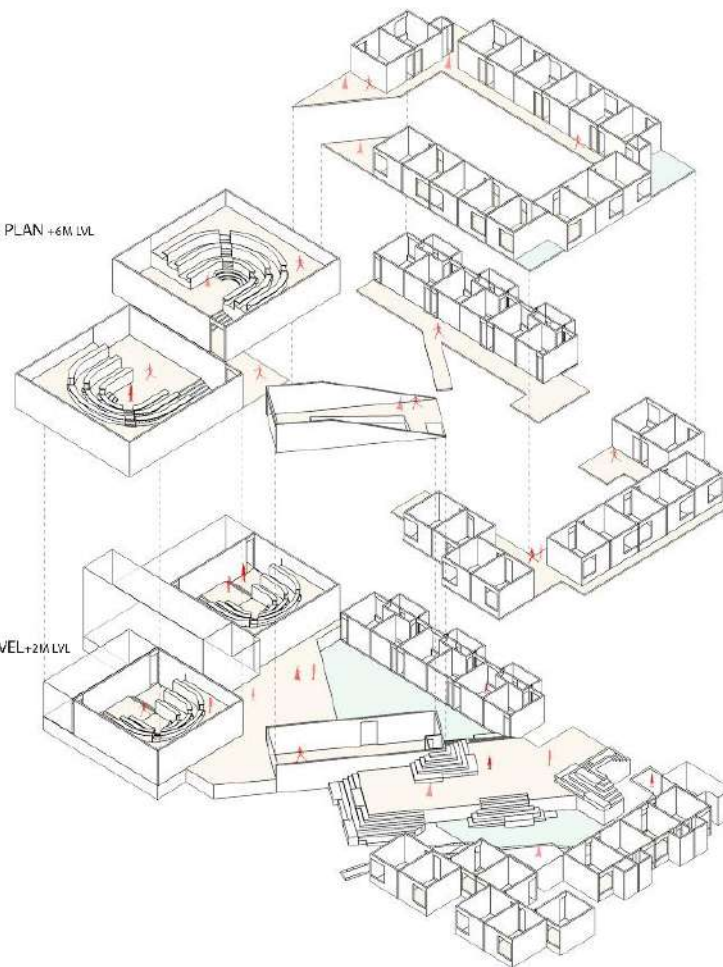
FIRST FLOOR PLAN +6M LVL



GROUND LEVEL +2M LVL



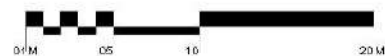
SPLIT LEVEL -2M LVL



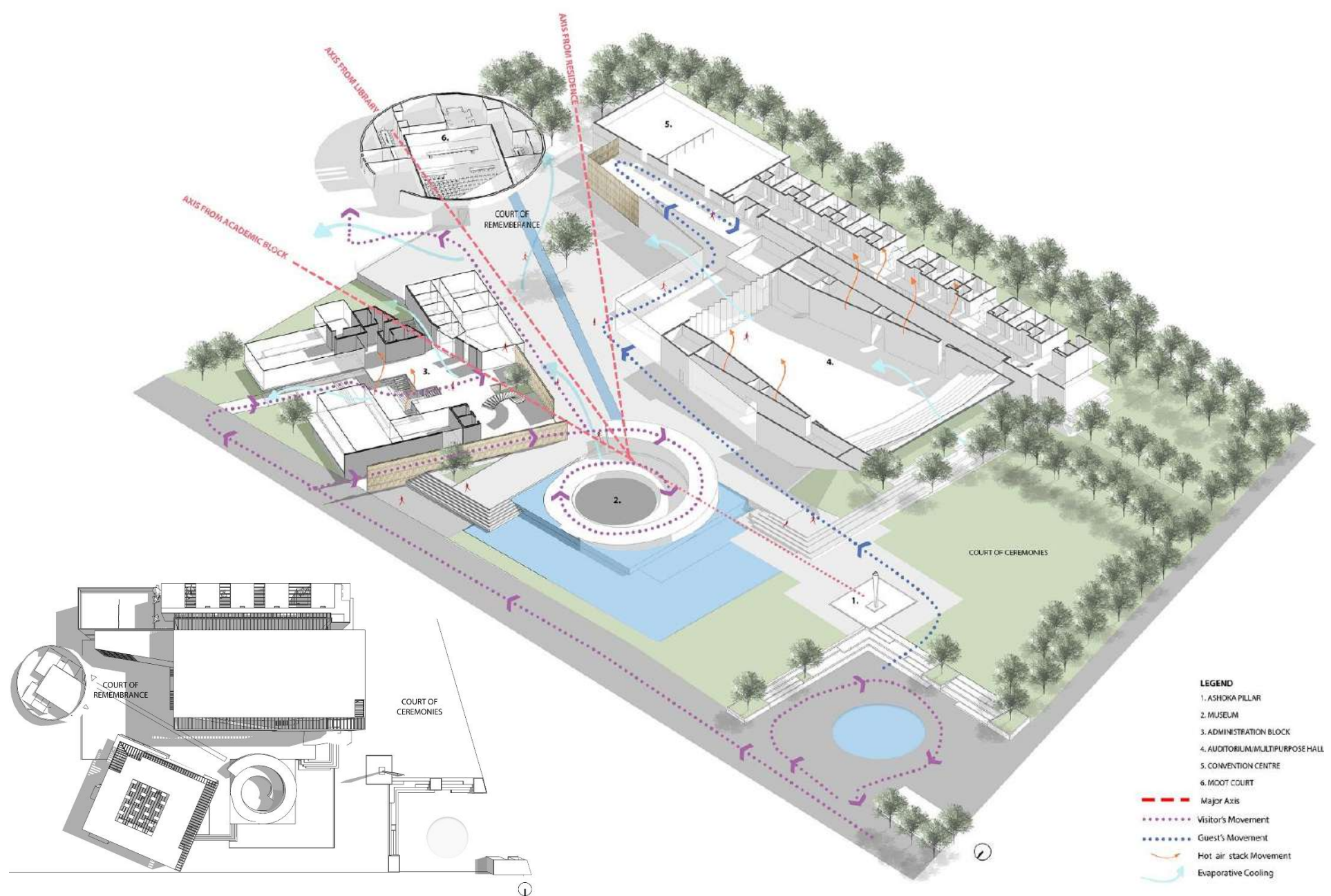
# LEGENDS

## Faculty

1. Professor's cabin
2. Associate Professor
3. Assistant Professor
4. Research Associate
5. Research Assistant
6. Common Room
7. Conference Hall (100 seats)
8. Conference Hall (200 seats)



FACULTY



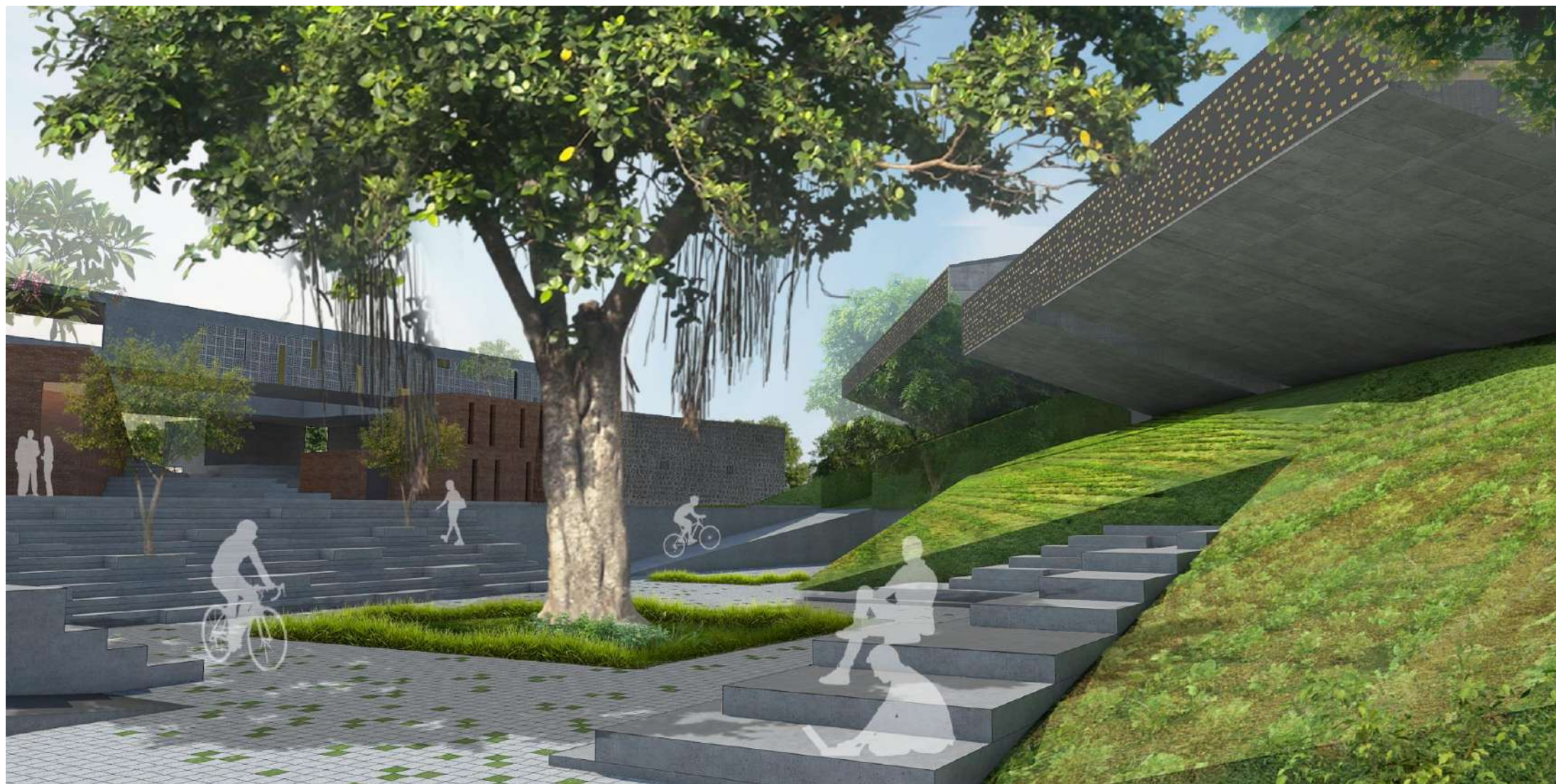




























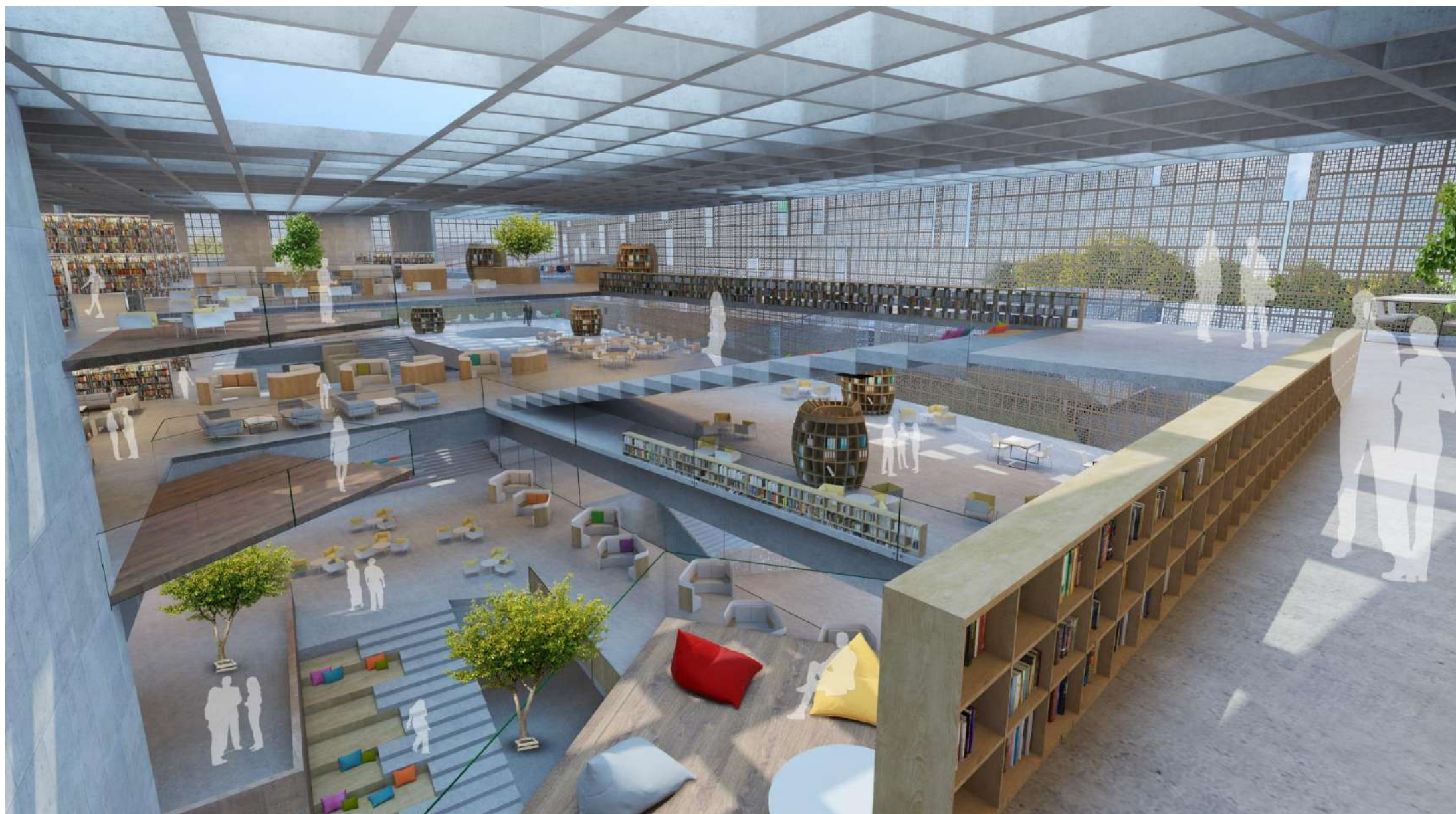
























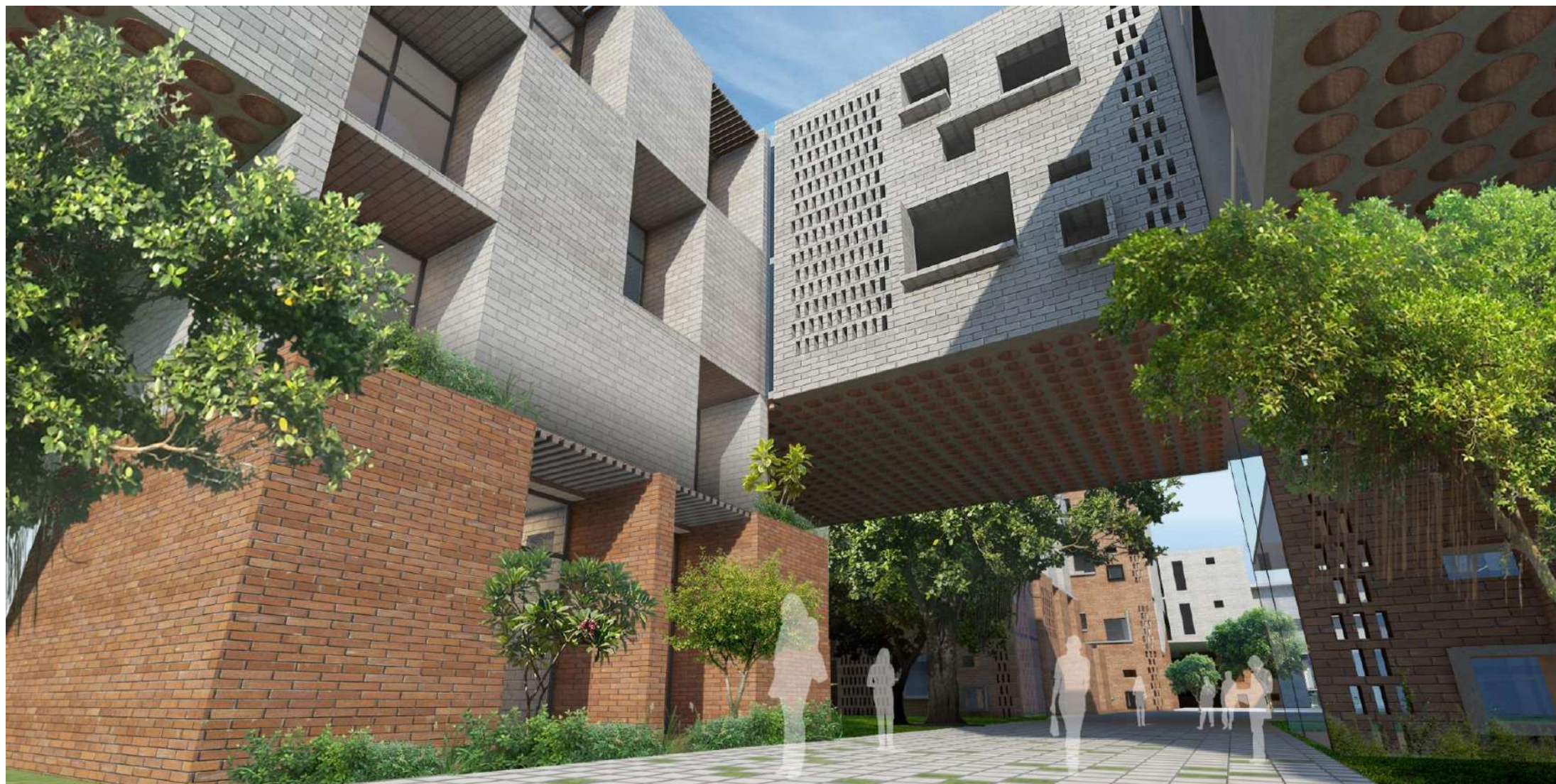




































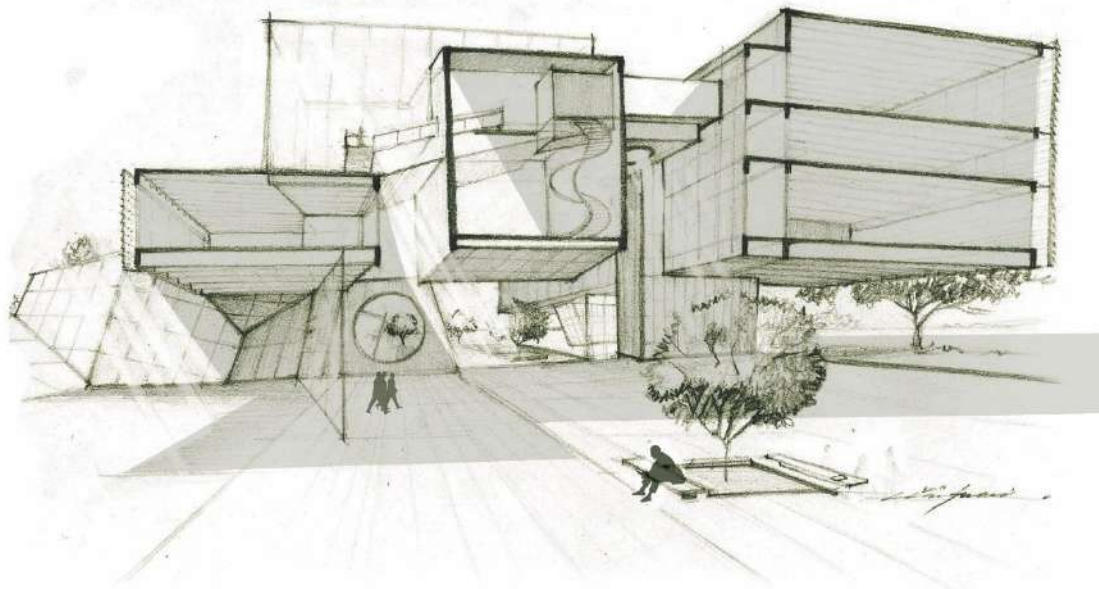




**Instem**

Banglore

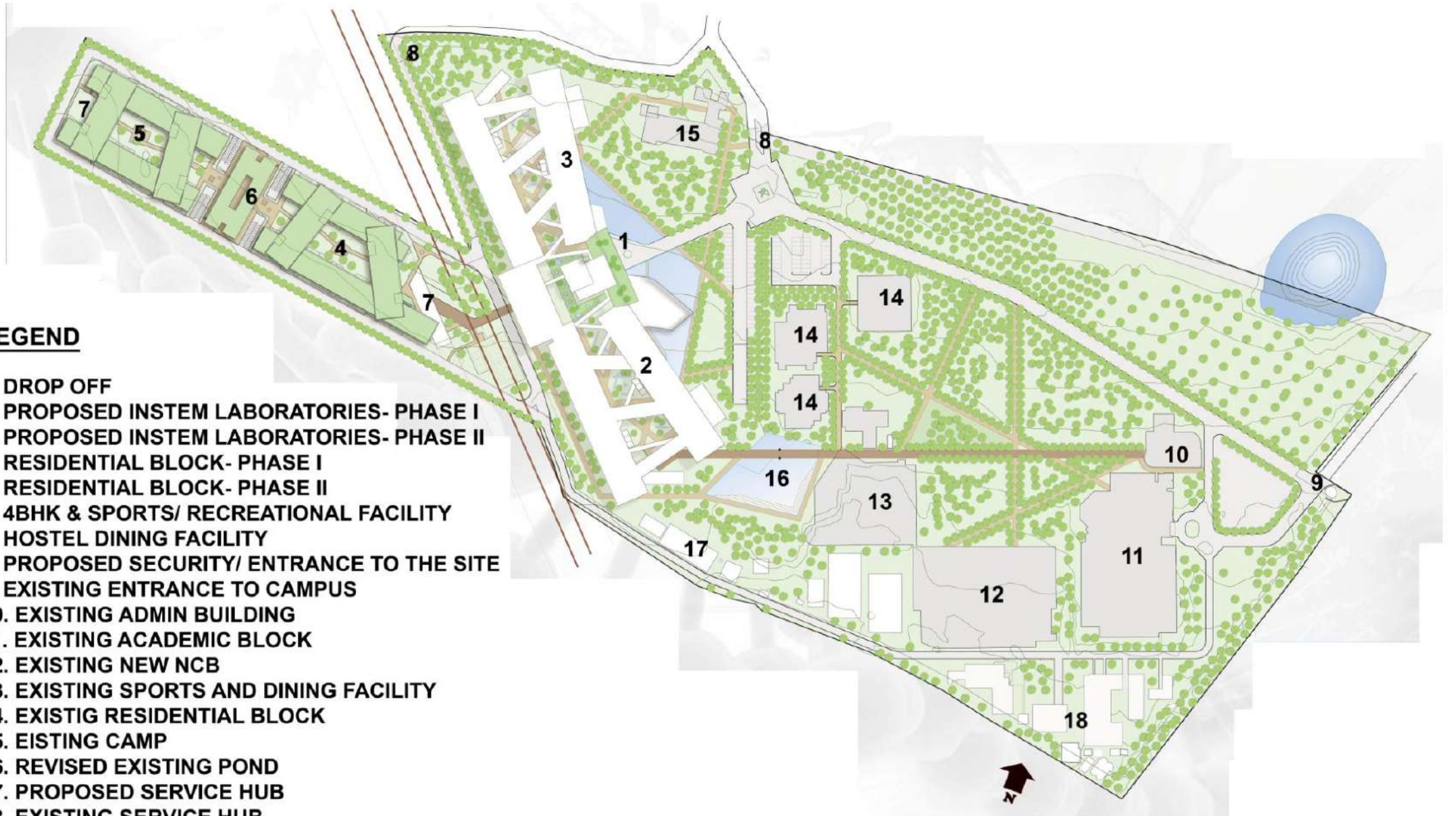




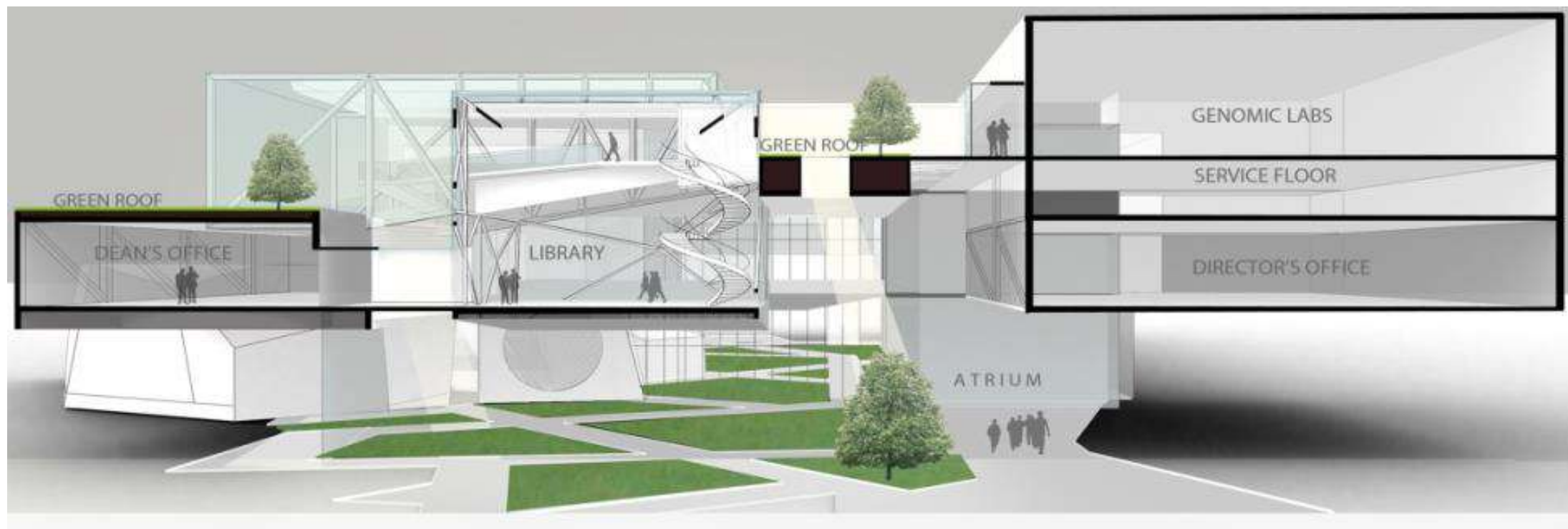


## **LEGEND**

1. DROP OFF
2. PROPOSED INSTEM LABORATORIES- PHASE I
3. PROPOSED INSTEM LABORATORIES- PHASE II
4. RESIDENTIAL BLOCK- PHASE I
5. RESIDENTIAL BLOCK- PHASE II
6. 4BHK & SPORTS/ RECREATIONAL FACILITY
7. HOSTEL DINING FACILITY
8. PROPOSED SECURITY/ ENTRANCE TO THE SITE
9. EXISTING ENTRANCE TO CAMPUS
10. EXISTING ADMIN BUILDING
11. EXISTING ACADEMIC BLOCK
12. EXISTING NEW NCB
13. EXISTING SPORTS AND DINING FACILITY
14. EXISTING RESIDENTIAL BLOCK
15. EXISTING CAMP
16. REVISED EXISTING POND
17. PROPOSED SERVICE HUB
18. EXISTING SERVICE HUB
19. EXISTING COURTS































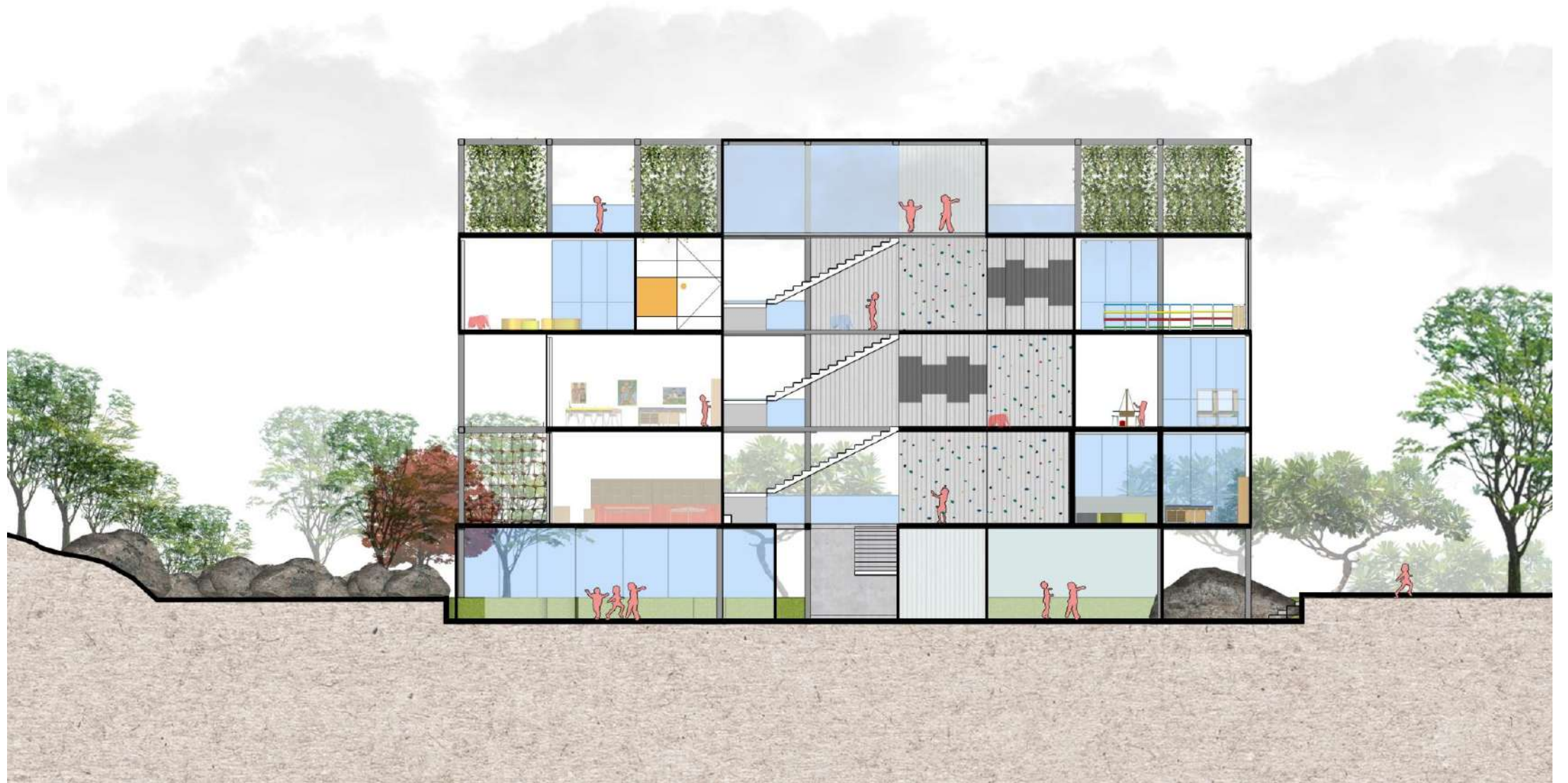
## Jubilee Hill Preschool

Bangalore

















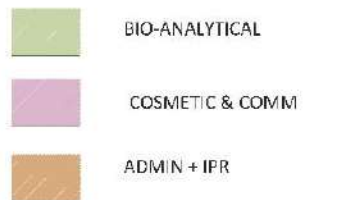




## Mankind Pharma R&D Centre

Delhi





1. CENTRAL LIFT LOBBY
2. CIRCULATION SPACE / CORRIDOR
3. SERVICE LIFT LOBBY
4. LANDSCAPED AREA
5. A.H.U
6. PANTRY
7. TOILETS
8. MEETING ROOMS





TOTAL HEIGHT FROM GROUND 15.0 M

